



[Go to Product page](#)

Datasheet for ABIN683833
anti-CYLD antibody (pSer418)

3 Images

Overview

Quantity:	100 µL
Target:	CYLD
Binding Specificity:	pSer418
Reactivity:	Human, Mouse
Host:	Rabbit
Clonality:	Polyclonal
Conjugate:	This CYLD antibody is un-conjugated
Application:	Western Blotting (WB), ELISA, Immunohistochemistry (Paraffin-embedded Sections) (IHC (p))

Product Details

Immunogen:	KLH conjugated synthetic phosphopeptide derived from human CYLD around the phosphorylation site of Ser418
Isotype:	IgG
Specificity:	This phosphorylation site is homologous to that of Ser414 in Mouse and Ser415 in Rat.
Cross-Reactivity:	Human, Mouse
Predicted Reactivity:	Rat,Dog,Cow,Pig,Horse
Purification:	Purified by Protein A.

Target Details

Target:	CYLD
---------	------

Target Details

Alternative Name: [Cyld \(CYLD Products\)](#)

Background: Synonyms: EAC, MFT, SBS, TEM, BRSS, CDMT, MFT1, CYLD1, CYLDI, USPL2, Ubiquitin carboxyl-terminal hydrolase CYLD, Deubiquitinating enzyme CYLD, Ubiquitin thioesterase CYLD, Ubiquitin-specific-processing protease CYLD, CYLD, KIAA0849, HSPC057

Background: Protease that specifically cleaves 'Lys-63'-linked polyubiquitin chains. Has endodeubiquitinase activity. Plays an important role in the regulation of pathways leading to NF-kappa-B activation. Contributes to the regulation of cell survival, proliferation and differentiation via its effects on NF-kappa-B activation. Negative regulator of Wnt signaling. Inhibits HDAC6 and thereby promotes acetylation of alpha-tubulin and stabilization of microtubules. Plays a role in the regulation of microtubule dynamics, and thereby contributes to the regulation of cell proliferation, cell polarization, cell migration, and angiogenesis. Required for normal cell cycle progress and normal cytokinesis. Inhibits nuclear translocation of NF-kappa-B. Plays a role in the regulation of inflammation and the innate immune response, via its effects on NF-kappa-B activation. Dispensable for the maturation of intrathymic natural killer cells, but required for the continued survival of immature natural killer cells. Negatively regulates TNFRSF11A signaling and osteoclastogenesis (By similarity).

Gene ID: 1540

UniProt: [Q9NQC7](#)

Pathways: [Apoptosis](#), [Activation of Innate immune Response](#)

Application Details

Application Notes: WB 1:300-5000
ELISA 1:500-1000
IHC-P 1:200-400

Restrictions: For Research Use only

Handling

Format: Liquid

Concentration: 1 µg/µL

Buffer: 0.01M TBS(pH 7.4) with 1 % BSA, 0.02 % Proclin300 and 50 % Glycerol.

Preservative: ProClin

Precaution of Use: This product contains ProClin: a POISONOUS AND HAZARDOUS SUBSTANCE, which should be

Handling

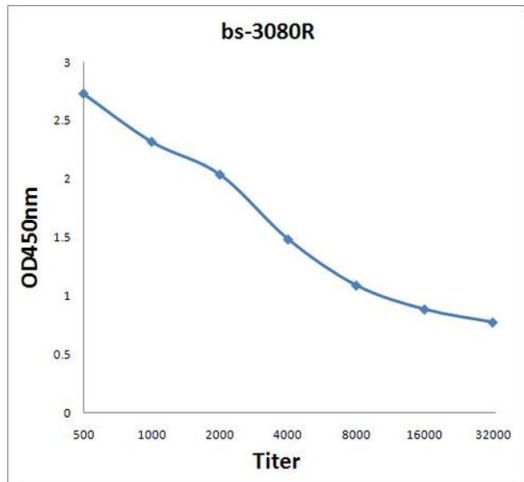
handled by trained staff only.

Storage: 4 °C,-20 °C

Storage Comment: Shipped at 4°C. Store at -20°C for one year. Avoid repeated freeze/thaw cycles.

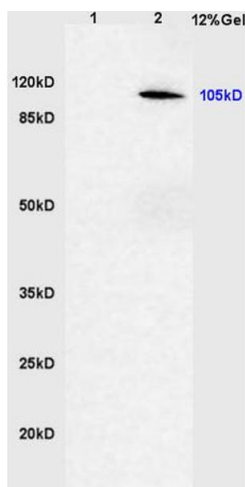
Expiry Date: 12 months

Images



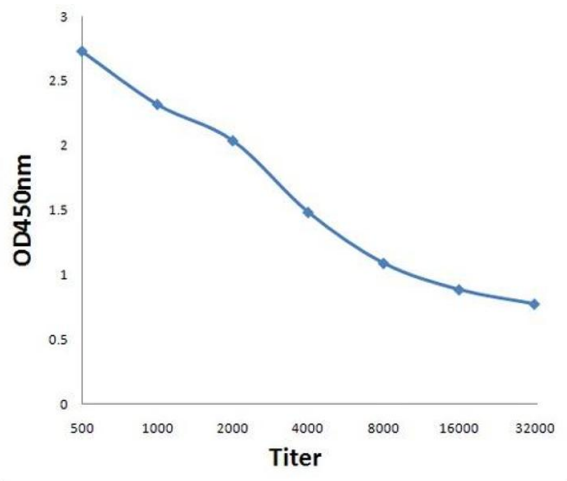
ELISA

Image 1. Antigen: 2 µg/100 µL Primary: Antiserum, 1:500, 1:1000, 1:2000, 1:4000, 1:8000, 1:16000, 1:32000; Secondary: HRP conjugated Rabbit Anti-Goat IgG at 1: 5000; TMB staining Read the data in Microplate Reader by 450nm.



SDS-PAGE

Image 2. Lane 1: rat brain lysates Lane 2: human gastric carcinoma lysates probed with Anti phospho-CYLD(Ser418) Polyclonal Antibody, Unconjugated (ABIN683833) at 1:200 in 4 °C. Followed by conjugation to secondary antibody at 1:3000 90min in 37 °C. Predicted band 105kD. Observed band size: 105kD.



ELISA

Image 3. Antigen: 0.2ug/100ul, Primary: Antiserum, 1:500, 1:1000, 1:2000, 1:4000, 1:8000, 1:16000, 1:32000, Secondary: HRP conjugated Goat-Anti-Rabbit IgG at 1: 5000, TMB staining, Read the data in MicroplateReader by 450nm