

Datasheet for ABIN684028
anti-CDC25A antibody (pThr507)



[Go to Product page](#)

2 Images

Overview

Quantity:	100 µL
Target:	CDC25A
Binding Specificity:	pThr507
Reactivity:	Mouse
Host:	Rabbit
Clonality:	Polyclonal
Conjugate:	This CDC25A antibody is un-conjugated
Application:	Western Blotting (WB), ELISA, Immunohistochemistry (Paraffin-embedded Sections) (IHC (p)), Immunofluorescence (Cultured Cells) (IF (cc)), Immunofluorescence (Paraffin-embedded Sections) (IF (p)), Immunohistochemistry (Frozen Sections) (IHC (fro))

Product Details

Immunogen:	KLH conjugated synthetic phosphopeptide derived from human cdc25A around the phosphorylation site of Thr507 [SR(p-T)WA]
Isotype:	IgG
Specificity:	This phosphorylation site is homologous to Thr497 in Mouse and Thr508 in Rat.
Cross-Reactivity:	Mouse
Predicted Reactivity:	Human,Rat,Dog,Cow,Chicken
Purification:	Purified by Protein A.

Target Details

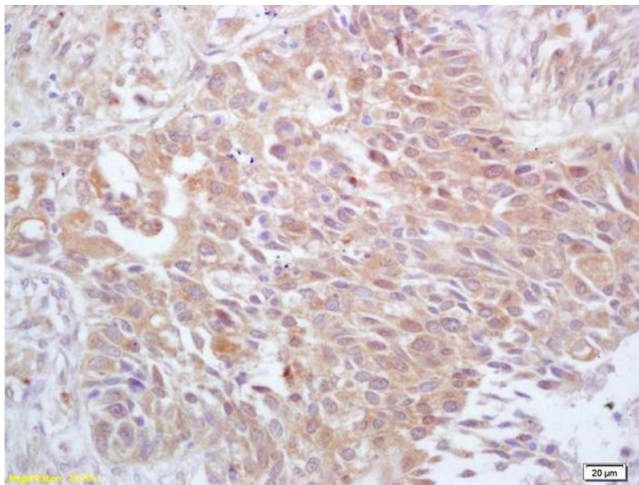
Target:	CDC25A
Alternative Name:	cdc25A (CDC25A Products)
Background:	Synonyms: CDC25A2, M-phase inducer phosphatase 1, Dual specificity phosphatase Cdc25A, CDC25A Background: Tyrosine protein phosphatase which functions as a dosage-dependent inducer of mitotic progression. Directly dephosphorylates CDK1 and stimulates its kinase activity. Also dephosphorylates CDK2 in complex with cyclin E, in vitro.
Gene ID:	993
UniProt:	P30304
Pathways:	Cell Division Cycle, Mitotic G1-G1/S Phases, M Phase

Application Details

Application Notes:	WB 1:300-5000 ELISA 1:500-1000 IHC-P 1:200-400 IHC-F 1:100-500 IF(IHC-P) 1:50-200 IF(IHC-F) 1:50-200 IF(ICC) 1:50-200
Restrictions:	For Research Use only

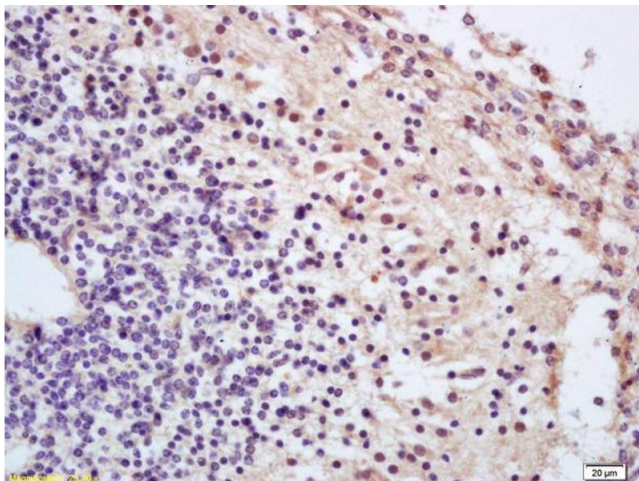
Handling

Format:	Liquid
Concentration:	1 µg/µL
Buffer:	0.01M TBS(pH 7.4) with 1 % BSA, 0.02 % Proclin300 and 50 % Glycerol.
Preservative:	ProClin
Precaution of Use:	This product contains ProClin: a POISONOUS AND HAZARDOUS SUBSTANCE, which should be handled by trained staff only.
Storage:	4 °C,-20 °C
Storage Comment:	Shipped at 4°C. Store at -20°C for one year. Avoid repeated freeze/thaw cycles.



Immunohistochemistry

Image 1. Formalin-fixed and paraffin embedded human lung carcinoma labeled with Anti-Phospho-cdc25A (Thr506) Polyclonal Antibody, Unconjugated (ABIN684028) at 1:200 followed by conjugation to the secondary antibody and DAB staining



Immunohistochemistry

Image 2. Formalin-fixed and paraffin embedded mouse embryo labeled with Anti-Phospho-cdc25A (Thr506) Polyclonal Antibody, Unconjugated (ABIN684028) at 1:200 followed by conjugation to the secondary antibody and DAB staining