

Datasheet for ABIN684043
anti-CDC25A antibody (pSer76)



[Go to Product page](#)

2 Images

Overview

Quantity:	100 µL
Target:	CDC25A
Binding Specificity:	pSer76
Reactivity:	Human, Mouse
Host:	Rabbit
Clonality:	Polyclonal
Conjugate:	This CDC25A antibody is un-conjugated
Application:	Western Blotting (WB), ELISA

Product Details

Immunogen:	KLH conjugated synthetic phosphopeptide derived from human cdc25A around the phosphorylation site of Ser76 [MG(p-S)SE]
Isotype:	IgG
Cross-Reactivity:	Human, Mouse
Predicted Reactivity:	Rat,Dog,Cow,Horse,Rabbit
Purification:	Purified by Protein A.

Target Details

Target:	CDC25A
Alternative Name:	cdc25A (CDC25A Products)

Target Details

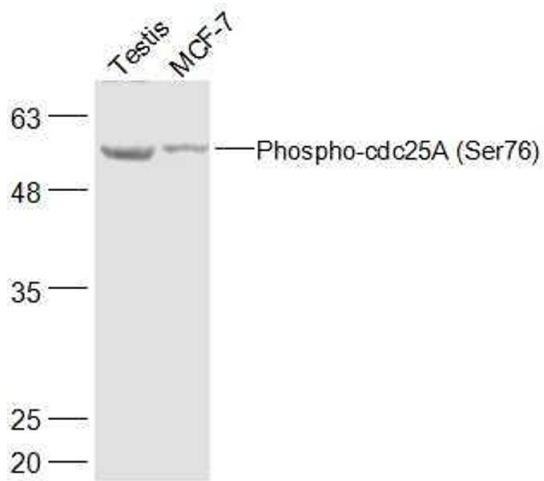
Background:	<p>Synonyms: cdc25ASer76, Cdc 25a, CDC25A2, Cell division cycle 25 homolog A S. pombe, Cell division cycle 25A, Cell division cycle 25A isoform a, Cell division cycle 25A isoform bv D9ErtD393ev Dual specificity phosphatase CDC25A, EC 3.1.3.48, M phase inducer phosphatase 1, MGC115549,</p> <p>Background: Cyclin dependent kinases are positively regulated by association with cyclins and negatively regulated by binding to inhibitory subunits. The activity of cyclin dependent kinases is also regulated by the phosphorylation status, which is controlled by the antagonistic action of Wee1 kinase and CDC25 phosphatases. Three CDC25 genes are present in human cells: CDC25A, CDC25B, and CDC25C. These three genes function at different phases of the cell cycle. Whereas CDC25A and CDC25B are expressed throughout the cell cycle, with peak expression in G1 for CDC25A and in both G1 S phase and G2 for CDC25B, CDC25C is predominantly expressed in G2.</p>
Gene ID:	993
Pathways:	Cell Division Cycle , Mitotic G1-G1/S Phases , M Phase

Application Details

Application Notes:	WB 1:300-5000 ELISA 1:500-1000
Restrictions:	For Research Use only

Handling

Format:	Liquid
Concentration:	1 µg/µL
Buffer:	0.01M TBS(pH 7.4) with 1 % BSA, 0.02 % Proclin300 and 50 % Glycerol.
Preservative:	ProClin
Precaution of Use:	This product contains ProClin: a POISONOUS AND HAZARDOUS SUBSTANCE, which should be handled by trained staff only.
Storage:	4 °C,-20 °C
Storage Comment:	Shipped at 4°C. Store at -20°C for one year. Avoid repeated freeze/thaw cycles.
Expiry Date:	12 months



Western Blotting

Image 1. Lane 1: Mouse Testis lysates Lane 2: Human MCF-7 lysates probed with Phospho-cdc25A (Ser76) Polyclonal Antibody, Unconjugated at 1:500 dilution and 4°C overnight incubation. Followed by conjugated secondary antibody incubation at 1:10000 for 60 min at 37°C.

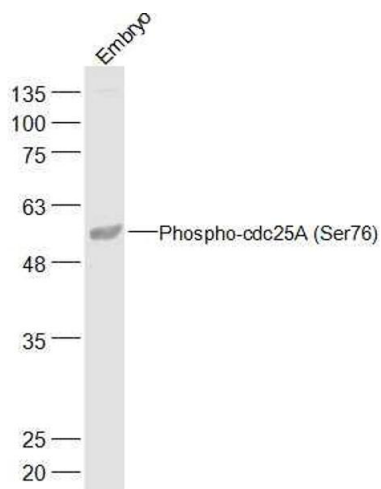


Image 2. Mouse Embryo lysates probed with Phospho-cdc25A (Ser76) Polyclonal Antibody, Unconjugated at 1:500 dilution and 4°C overnight incubation. Followed by conjugated secondary antibody incubation at 1:10000 for 60 min at 37°C.