



[Go to Product page](#)

Datasheet for ABIN684178  
**anti-DOK2 antibody (pTyr139)**

1 Image

### Overview

Quantity:	100 µL
Target:	DOK2
Binding Specificity:	pTyr139
Reactivity:	Mouse
Host:	Rabbit
Clonality:	Polyclonal
Conjugate:	This DOK2 antibody is un-conjugated
Application:	Western Blotting (WB), ELISA, Immunofluorescence (Cultured Cells) (IF (cc)), Immunofluorescence (Paraffin-embedded Sections) (IF (p)), Immunohistochemistry (Paraffin-embedded Sections) (IHC (p)), Immunohistochemistry (Frozen Sections) (IHC (fro))

### Product Details

Immunogen:	KLH conjugated synthetic phosphopeptide derived from human p56Dok2 around the phosphorylation site of Tyr139
Isotype:	IgG
Cross-Reactivity:	Mouse
Predicted Reactivity:	Human,Rat,Dog,Cow,Pig,Horse,Chicken
Purification:	Purified by Protein A.

### Target Details

Target:	DOK2
---------	------

## Target Details

---

Alternative Name:	DOK2 ( <a href="#">DOK2 Products</a> )
Background:	<p>Synonyms: DOK2 Tyr139, p-DOK2 Tyr139, Docking protein 2 56 kDa, Docking protein 2 antibody DOK 2, DOK R, Downstream of tyrosine kinase 2, p56dok 2, p56dok 2, p56DOK, p56dok2</p> <p>Background: The protein encoded by this gene is constitutively tyrosine phosphorylated in hematopoietic progenitors isolated from chronic myelogenous leukemia (CML) patients in the chronic phase. It may be a critical substrate for p210(bcr/abl), a chimeric protein whose presence is associated with CML. This encoded protein binds p120 (RasGAP) from CML cells. [provided by RefSeq, Jul 2008]</p>
Gene ID:	9046

## Application Details

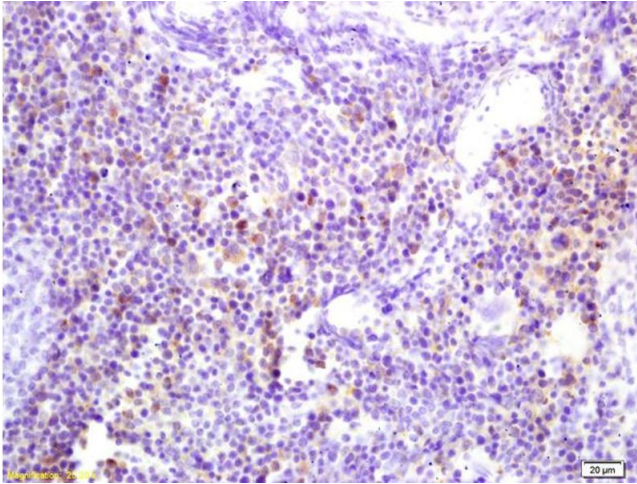
---

Application Notes:	<p>WB 1:300-5000</p> <p>ELISA 1:500-1000</p> <p>IHC-P 1:200-400</p> <p>IHC-F 1:100-500</p> <p>IF(IHC-P) 1:50-200</p> <p>IF(IHC-F) 1:50-200</p> <p>IF(ICC) 1:50-200</p>
Restrictions:	For Research Use only

## Handling

---

Format:	Liquid
Concentration:	1 µg/µL
Buffer:	0.01M TBS( pH 7.4) with 1 % BSA, 0.02 % Proclin300 and 50 % Glycerol.
Preservative:	ProClin
Precaution of Use:	This product contains ProClin: a POISONOUS AND HAZARDOUS SUBSTANCE, which should be handled by trained staff only.
Storage:	4 °C,-20 °C
Storage Comment:	Shipped at 4°C. Store at -20°C for one year. Avoid repeated freeze/thaw cycles.
Expiry Date:	12 months



### Immunohistochemistry

**Image 1.** Formalin-fixed and paraffin embedded mouse spleen labeled with Anti-Phospho-p56Dok2 (Tyr142) Polyclonal Antibody, Unconjugated (ABIN684178) at 1:200 followed by conjugation to the secondary antibody and DAB staining