

Datasheet for ABIN684343  
**anti-DAB1 antibody (pTyr232)**

## 2 Images

[Go to Product page](#)

## Overview

Quantity:	100 µL
Target:	DAB1
Binding Specificity:	pTyr232
Reactivity:	Human
Host:	Rabbit
Clonality:	Polyclonal
Conjugate:	This DAB1 antibody is un-conjugated
Application:	Western Blotting (WB), ELISA, Immunofluorescence (Cultured Cells) (IF (cc)), Immunofluorescence (Paraffin-embedded Sections) (IF (p)), Immunohistochemistry (Paraffin- embedded Sections) (IHC (p)), Immunohistochemistry (Frozen Sections) (IHC (fro))

## Product Details

Immunogen:	KLH conjugated synthetic phosphopeptide derived from human Dab1 around the phosphorylation site of Tyr232
Isotype:	IgG
Specificity:	This phosphorylation site is found at Tyr232 in Mouse, Rat, and Bovine DAB1.
Cross-Reactivity:	Human
Predicted Reactivity:	Mouse,Rat,Dog,Cow,Pig,Horse,Chicken
Purification:	Purified by Protein A.

## Target Details

Target:	DAB1
Alternative Name:	Dab1 ( <a href="#">DAB1 Products</a> )
Background:	<p>Synonyms: Disabled homolog 1, DAB1</p> <p>Background: Disabled 1 (Dab1) is an 80 kDa protein that is encoded by the Disabled-1 gene locus which is mutated in scrambler and yotari mutant mice. Phenotypically, the mutation of this gene produces motor defects and ataxia, disruption of neuronal migration, and severe cerebellar hypoplasia. Dab1 is an intracellular adapter protein that functions in downstream signaling events initiated by the secreted protein reelin. Dab1 contains a phosphotyrosine binding (PTB) domain in the amino terminus. Tyrosine phosphorylation of Dab1 is increased by reelin binding to the Very Low Density Lipoprotein Receptor (VLDLR) and Apolipoprotein E Receptor 2 (ApoER2) through stimulation of Src family kinases. Src family kinase and c-Abl activities are themselves then stimulated by binding to tyrosine phosphorylated Dab1. Dab1 also mediates activation of Akt (PKB) by reelin resulting in inhibition of glycogen synthase kinase 3 beta (GSK-3 beta) and decreased phosphorylation of the microtubule-associated protein, Tau. Dab1 serine 491 is phosphorylated in a Cdk5-dependent manner and regulates, likely indirectly, Reelin-induced signaling during neural cortex development.</p>
Gene ID:	1600
UniProt:	<a href="#">075553</a>

## Application Details

Application Notes:	WB 1:300-5000 ELISA 1:500-1000 IHC-P 1:200-400 IHC-F 1:100-500 IF(IHC-P) 1:50-200 IF(IHC-F) 1:50-200 IF(ICC) 1:50-200
Restrictions:	For Research Use only

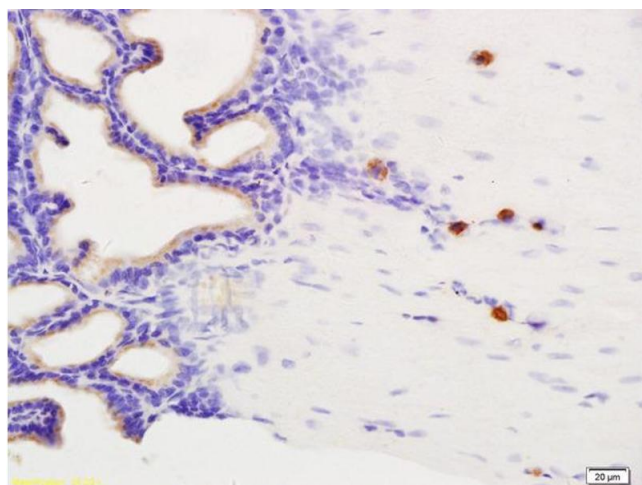
## Handling

Format:	Liquid
Concentration:	1 µg/µL

## Handling

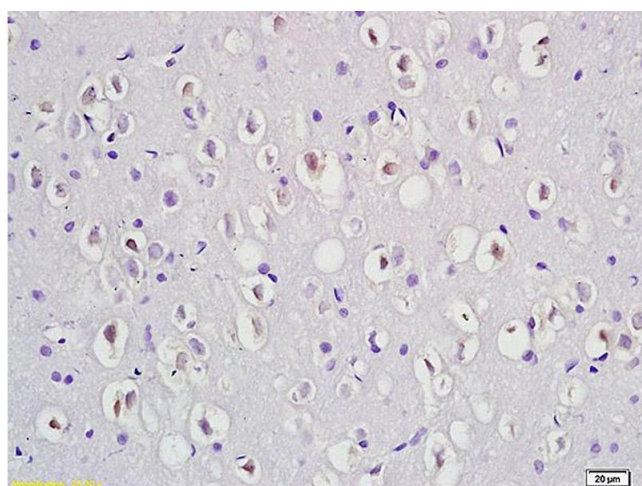
Buffer:	0.01M TBS( pH 7.4) with 1 % BSA, 0.02 % Proclin300 and 50 % Glycerol.
Preservative:	ProClin
Precaution of Use:	This product contains ProClin: a POISONOUS AND HAZARDOUS SUBSTANCE, which should be handled by trained staff only.
Storage:	4 °C,-20 °C
Storage Comment:	Shipped at 4°C. Store at -20°C for one year. Avoid repeated freeze/thaw cycles.
Expiry Date:	12 months

## Images



### Immunohistochemistry

**Image 1.** Formalin-fixed and paraffin embedded rat seminal vesicle labeled with Anti-Phospho-Dab1 (Tyr232) Polyclonal Antibody, Unconjugated (ABIN684343) at 1:200 followed by conjugation to the secondary antibody and DAB staining.



### Immunohistochemistry

**Image 2.** Formalin-fixed and paraffin embedded rat brain labeled with Anti-Phospho-Dab1 (Tyr232) Polyclonal Antibody, Unconjugated (ABIN684343) at 1:200 followed by conjugation to the secondary antibody and DAB staining