



Datasheet for ABIN684553
anti-Ephrin B antibody (pTyr324, pTyr329)



[Go to Product page](#)

1 Image

Overview

Quantity:	100 µL
Target:	Ephrin B (EphB)
Binding Specificity:	pTyr324, pTyr329
Reactivity:	Human
Host:	Rabbit
Clonality:	Polyclonal
Conjugate:	This Ephrin B antibody is un-conjugated
Application:	Western Blotting (WB), Immunofluorescence (Paraffin-embedded Sections) (IF (p)), Immunofluorescence (Cultured Cells) (IF (cc)), ELISA, Immunohistochemistry (Frozen Sections) (IHC (fro))

Product Details

Immunogen:	KLH conjugated synthetic phosphopeptide derived from human Ephrin B around the phosphorylation site of Tyr324/329
Isotype:	IgG
Specificity:	These phosphorylation sites are homologous to Tyr323 + Tyr328 in Mouse.
Predicted Reactivity:	Human,Mouse,Rat,Dog,Cow,Pig,Horse,Chicken,Rabbit
Purification:	Purified by Protein A.

Target Details

Target:	Ephrin B (EphB)
---------	-----------------

Target Details

Alternative Name: Ephrin B + ([EphB Products](#))

Background: Synonyms: CFND, CFNS, EFB1, EFL3, EPLG2, Elk-L, LERK2, Ephrin-B1, EFL-3, ELK ligand, EPH-related receptor tyrosine kinase ligand 2, LERK-2, EFNB1

Background: Binds to the receptor tyrosine kinases EPHB1 and EPHA1. Binds to, and induce the collapse of, commissural axons/growth cones in vitro. May play a role in constraining the orientation of longitudinally projecting axons (By similarity). Cell surface transmembrane ligand for Eph receptors, a family of receptor tyrosine kinases which are crucial for migration, repulsion and adhesion during neuronal, vascular and epithelial development. Binds promiscuously Eph receptors residing on adjacent cells, leading to contact-dependent bidirectional signaling into neighboring cells. The signaling pathway downstream of the receptor is referred to as forward signaling while the signaling pathway downstream of the ephrin ligand is referred to as reverse signaling. Binds to the receptor tyrosine kinases EPHB3 (preferred), EPHB1 and EPHA1. Binds to, and induce the collapse of, commissural axons/growth cones in vitro. May play a role in constraining the orientation of longitudinally projecting axons (By similarity).

Gene ID: 1947

UniProt: [P98172](#)

Application Details

Application Notes: WB 1:300-5000
ELISA 1:500-1000
IHC-F 1:100-500
IF(IHC-P) 1:50-200
IF(IHC-F) 1:50-200
IF(ICC) 1:50-200

Restrictions: For Research Use only

Handling

Format: Liquid

Concentration: 1 µg/µL

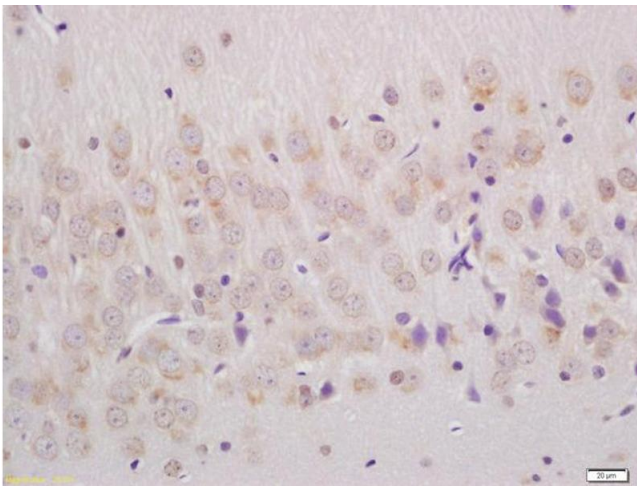
Buffer: 0.01M TBS(pH 7.4) with 1 % BSA, 0.02 % Proclin300 and 50 % Glycerol.

Preservative: ProClin

Handling

Precaution of Use:	This product contains ProClin: a POISONOUS AND HAZARDOUS SUBSTANCE, which should be handled by trained staff only.
Storage:	4 °C, -20 °C
Storage Comment:	Shipped at 4°C. Store at -20°C for one year. Avoid repeated freeze/thaw cycles.
Expiry Date:	12 months

Images



Immunohistochemistry

Image 1. Formalin-fixed and paraffin embedded rat brain labeled with Anti-phospho-Ephrin B (Tyr324 + Tyr29) Polyclonal Antibody, Unconjugated (ABIN684553) at 1:200 followed by conjugation to the secondary antibody and DAB staining