

Datasheet for ABIN684958  
**anti-GCN2 antibody (pThr667)**[Go to Product page](#)

## 4 Images

## Overview

Quantity:	100 µL
Target:	GCN2 (EIF2AK4)
Binding Specificity:	pThr667
Reactivity:	Mouse, Rat
Host:	Rabbit
Clonality:	Polyclonal
Conjugate:	This GCN2 antibody is un-conjugated
Application:	Western Blotting (WB), ELISA, Immunofluorescence (Cultured Cells) (IF (cc)), Immunofluorescence (Paraffin-embedded Sections) (IF (p)), Immunohistochemistry (Paraffin- embedded Sections) (IHC (p)), Immunohistochemistry (Frozen Sections) (IHC (fro))

## Product Details

Immunogen:	KLH conjugated synthetic phosphopeptide derived from human GCN2 around the phosphorylation site of Thr667
Isotype:	IgG
Specificity:	This phosphorylation site is homologous to Thr666 in Mouse and Thr667 in Rat.
Cross-Reactivity:	Mouse, Rat
Predicted Reactivity:	Human,Dog,Cow,Horse
Purification:	Purified by Protein A.

## Target Details

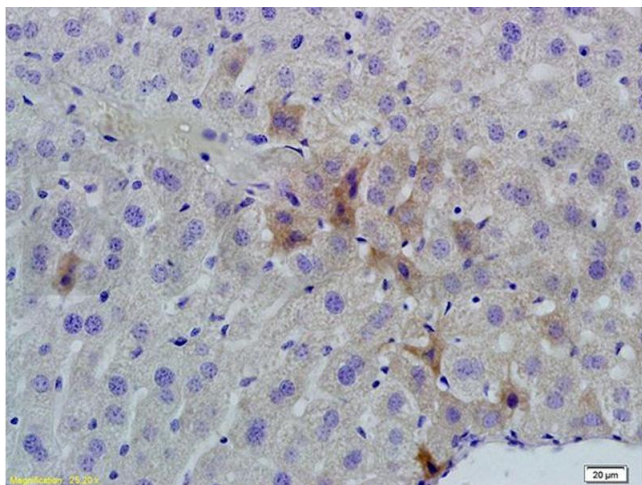
Target:	GCN2 (EIF2AK4)
Alternative Name:	GCN2 ( <a href="#">EIF2AK4 Products</a> )
Background:	<p>Synonyms: GCN2, PVOD2, Eukaryotic translation initiation factor 2-alpha kinase 4, GCN2-like protein, EIF2AK4, KIAA1338</p> <p>Background: GCN2 belongs to a family of kinases that phosphorylate the alpha subunit of eukaryotic translation initiation factor 2 to downregulate protein synthesis in response to varied cellular stresses.</p>
Gene ID:	440275
UniProt:	<a href="#">Q9P2K8</a>
Pathways:	<a href="#">ER-Nucleus Signaling</a> , <a href="#">Hepatitis C</a>

## Application Details

Application Notes:	WB 1:300-5000 ELISA 1:500-1000 IHC-P 1:200-400 IHC-F 1:100-500 IF(IHC-P) 1:50-200 IF(IHC-F) 1:50-200 IF(ICC) 1:50-200
Restrictions:	For Research Use only

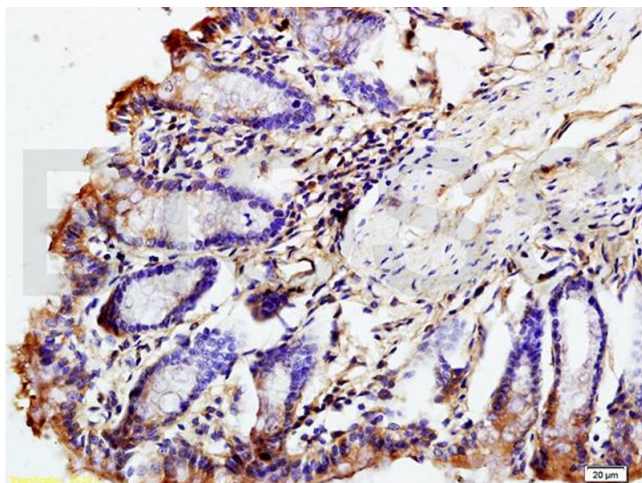
## Handling

Format:	Liquid
Concentration:	1 µg/µL
Buffer:	0.01M TBS( pH 7.4) with 1 % BSA, 0.02 % Proclin300 and 50 % Glycerol.
Preservative:	ProClin
Precaution of Use:	This product contains ProClin: a POISONOUS AND HAZARDOUS SUBSTANCE, which should be handled by trained staff only.
Storage:	4 °C,-20 °C
Storage Comment:	Shipped at 4°C. Store at -20°C for one year. Avoid repeated freeze/thaw cycles.



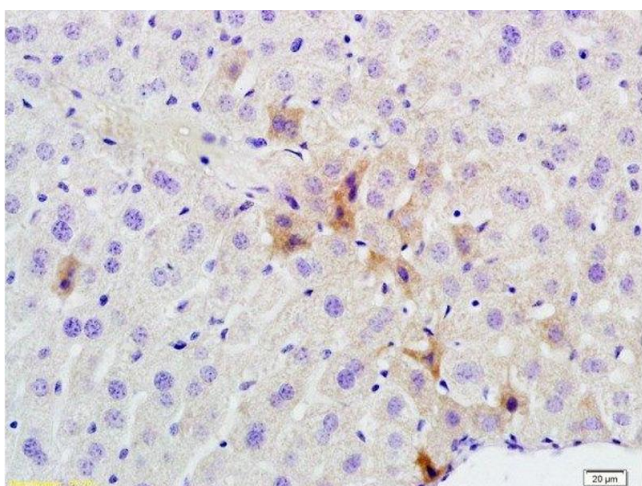
#### Immunohistochemistry

**Image 1.** Formalin-fixed and paraffin embedded mouse liver labeled with Rabbit Anti phospho-GCN2 (Thr667) Polyclonal Antibody, Unconjugated (ABIN684958) at 1:200 followed by conjugation to the secondary antibody and DAB staining



#### Immunohistochemistry

**Image 2.** Formalin-fixed and paraffin embedded mouse intestine labeled with Rabbit Anti phospho-GCN2 (Thr667) Polyclonal Antibody, Unconjugated (ABIN684958) at 1:200 followed by conjugation to the secondary antibody and DAB staining



#### Immunohistochemistry (Paraffin-embedded Sections)

**Image 3.** Formalin-fixed and paraffin embedded mouse liver labeled with Rabbit Anti phospho-GCN2 (Thr667) Polyclonal Antibody, Unconjugated at 1:200 followed by conjugation to the secondary antibody and DAB staining

Please check the [product details page](#) for more images. Overall 4 images are available for ABIN684958.