

Datasheet for ABIN685183
anti-HIST1H1E antibody (pThr18)

3 Images

[Go to Product page](#)

Overview

Quantity:	100 µL
Target:	HIST1H1E
Binding Specificity:	pThr18
Reactivity:	Mouse, Rat
Host:	Rabbit
Clonality:	Polyclonal
Conjugate:	This HIST1H1E antibody is un-conjugated
Application:	ELISA, Western Blotting (WB), Immunofluorescence (Paraffin-embedded Sections) (IF (p)), Immunofluorescence (Cultured Cells) (IF (cc)), Immunohistochemistry (Paraffin-embedded Sections) (IHC (p)), Immunohistochemistry (Frozen Sections) (IHC (fro))

Product Details

Immunogen:	KLH conjugated synthetic phosphopeptide derived from human Histone H1.4 around the phosphorylation site of Thr18
Isotype:	IgG
Specificity:	This phosphorylation site is found in Rat H1C as well, but not Human or Mouse H1C. This phosphorylation site is homologous to Thr18 in Rat H1C/H1D and Mouse H1D. Due to the highly conserved nature of these histones, this antibody may react with these members when phosphorylated at this site.
Cross-Reactivity:	Mouse, Rat
Predicted Reactivity:	Human

Product Details

Purification: Purified by Protein A.

Target Details

Target:	HIST1H1E
Alternative Name:	Histone H1.4 (HIST1H1E Products)
Background:	<p>Synonyms: H1E, H1.4, H1F4, H1s-4, dJ221C16.5, Histone H1.4, Histone H1b, Histone H1s-4, HIST1H1E</p> <p>Background: Histone H1 protein binds to linker DNA between nucleosomes forming the macromolecular structure known as the chromatin fiber. Histones H1 are necessary for the condensation of nucleosome chains into higher-order structured fibers. Acts also as a regulator of individual gene transcription through chromatin remodeling, nucleosome spacing and DNA methylation (By similarity).</p>
Gene ID:	3008
UniProt:	P10412

Application Details

Application Notes:	WB 1:300-5000 ELISA 1:500-1000 IHC-P 1:200-400 IHC-F 1:100-500 IF(IHC-P) 1:50-200 IF(IHC-F) 1:50-200 IF(ICC) 1:50-200
Restrictions:	For Research Use only

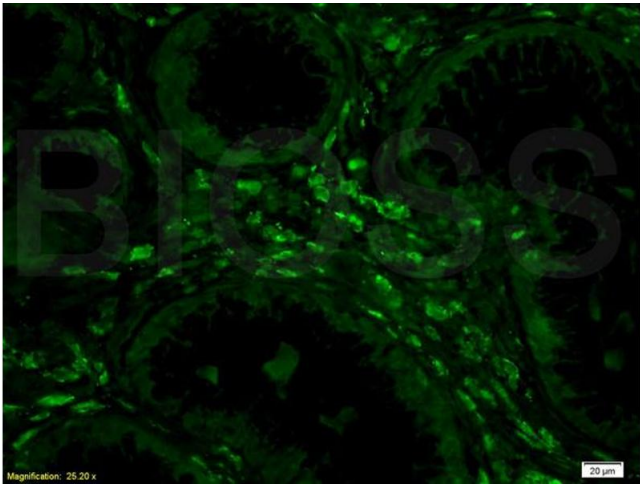
Handling

Format:	Liquid
Concentration:	1 µg/µL
Buffer:	0.01M TBS(pH 7.4) with 1 % BSA, 0.02 % Proclin300 and 50 % Glycerol.
Preservative:	ProClin
Precaution of Use:	This product contains ProClin: a POISONOUS AND HAZARDOUS SUBSTANCE, which should be

Handling

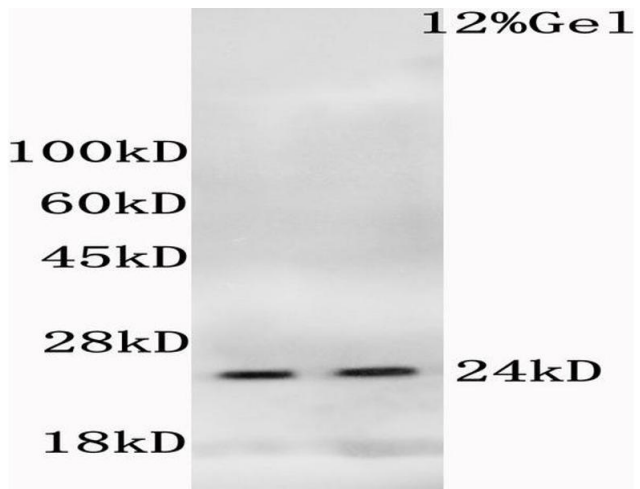
	handled by trained staff only.
Storage:	4 °C,-20 °C
Storage Comment:	Shipped at 4°C. Store at -20°C for one year. Avoid repeated freeze/thaw cycles.
Expiry Date:	12 months

Images



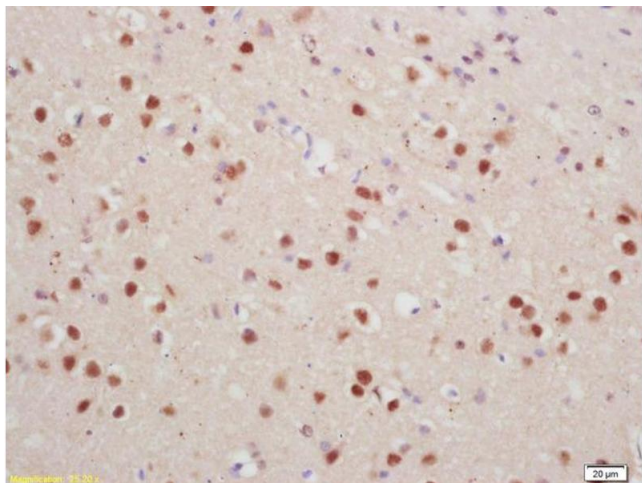
Immunofluorescence

Image 1. Formalin-fixed and human colon carcinoma tissue labeled with Anti-Phospho-IKK alpha beta (Ser176 Ser180) Polyclonal Antibody, unconjugated (ABIN685183) at 1: 200 followed by incubation with conjugated secondary antibody, Goat Anti-Rabbit IgG, FITC conjugated ,



SDS-PAGE

Image 2. L1 mouse liver, L2 mouse cerebrum lysates probed (ABIN685183) at 1:200 in 4 °C. Followed by conjugation to secondary antibody at 1:3000 90min in 37 °C. Predicted and observed band size: 24kDa.



Immunohistochemistry

Image 3. Formalin-fixed and paraffin embedded rat brain labeled with Anti-phospho-Histone H1.4(Thr18) Polyclonal Antibody, Unconjugated (ABIN685183) at 1:200 followed by conjugation to the secondary antibody and DAB staining