

Datasheet for ABIN685567
anti-MAP2 antibody (AA 1-120)



[Go to Product page](#)

2 Images

6 Publications

Overview

Quantity:	100 µL
Target:	MAP2
Binding Specificity:	AA 1-120
Reactivity:	Human, Mouse, Rat, Pig
Host:	Rabbit
Clonality:	Polyclonal
Conjugate:	This MAP2 antibody is un-conjugated
Application:	Western Blotting (WB), ELISA, Immunohistochemistry (Paraffin-embedded Sections) (IHC (p)), Immunofluorescence (Cultured Cells) (IF (cc)), Immunofluorescence (Paraffin-embedded Sections) (IF (p)), Flow Cytometry (FACS), Immunohistochemistry (Frozen Sections) (IHC (fro))

Product Details

Immunogen:	KLH conjugated synthetic peptide derived from human MAP2
Isotype:	IgG
Cross-Reactivity:	Human, Mouse, Pig, Rat
Purification:	Purified by Protein A.

Target Details

Target:	MAP2
Alternative Name:	MAP2/MAP-2a.b.c (MAP2 Products)

Target Details

Background:	Synonyms: MAP2A, MAP2B, MAP2C, Microtubule-associated protein 2, MAP-2, MAP2 Background: The exact function of MAP2 is unknown but MAPs may stabilize the microtubules against depolymerization. They also seem to have a stiffening effect on microtubules.
Gene ID:	4133
UniProt:	P11137

Application Details

Application Notes:	WB 1:300-5000 ELISA 1:500-1000 FCM 1:20-100 IHC-P 1:200-400 IHC-F 1:100-500 IF(IHC-P) 1:50-200 IF(IHC-F) 1:50-200 IF(ICC) 1:50-200
Restrictions:	For Research Use only

Handling

Format:	Liquid
Concentration:	1 µg/µL
Buffer:	0.01M TBS(pH 7.4) with 1 % BSA, 0.02 % Proclin300 and 50 % Glycerol.
Preservative:	ProClin
Precaution of Use:	This product contains ProClin: a POISONOUS AND HAZARDOUS SUBSTANCE, which should be handled by trained staff only.
Storage:	4 °C,-20 °C
Storage Comment:	Shipped at 4°C. Store at -20°C for one year. Avoid repeated freeze/thaw cycles.
Expiry Date:	12 months

Publications

Product cited in:	Lu, Ben, Xiao, Peng, Zhang: "AMP-activated protein kinase activation in mediating phenylalanine-induced neurotoxicity in experimental models of phenylketonuria." in: Journal of inherited
-------------------	---

metabolic disease, (2018) ([PubMed](#)).

Usui, Sakurai, Kawasaki, Ohama, Yamawaki, Sato: "Establishment of a novel three-dimensional primary culture model for hippocampal neurogenesis." in: **Physiological reports**, Vol. 5, Issue 12, (2017) ([PubMed](#)).

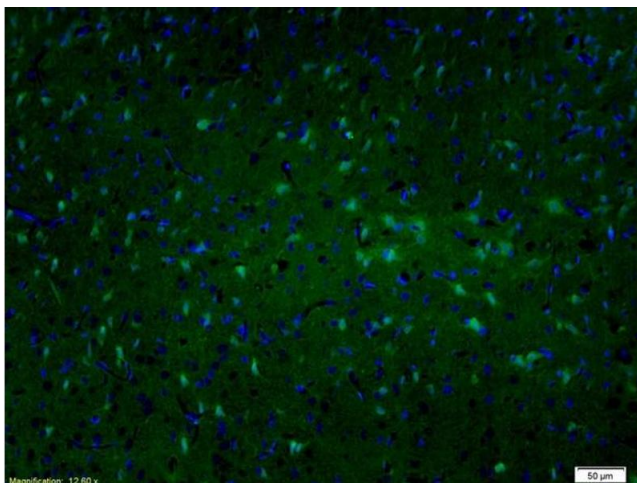
Wang, Jing, Song, Xing: "Neuroprotective effects of Wnt/ β -catenin signaling pathway against A β -induced tau protein over-phosphorylation in PC12 cells." in: **Biochemical and biophysical research communications**, Vol. 471, Issue 4, pp. 628-32, (2016) ([PubMed](#)).

Zuo, Wang, Li, Lin, Duan, Qi, Li, Sun, Wu: "Existence of glia mitigated ketamine-induced neurotoxicity in neuron-glia mixed cultures of neonatal rat cortex and the glia-mediated protective effect of 2-PMPA." in: **Neurotoxicology**, Vol. 44, pp. 218-30, (2014) ([PubMed](#)).

Gu, Huang, Shen, Gao, Ding, Wu, Guo: "Early activation of nSMase2/ceramide pathway in astrocytes is involved in ischemia-associated neuronal damage via inflammation in rat hippocampi." in: **Journal of neuroinflammation**, Vol. 10, pp. 109, (2013) ([PubMed](#)).

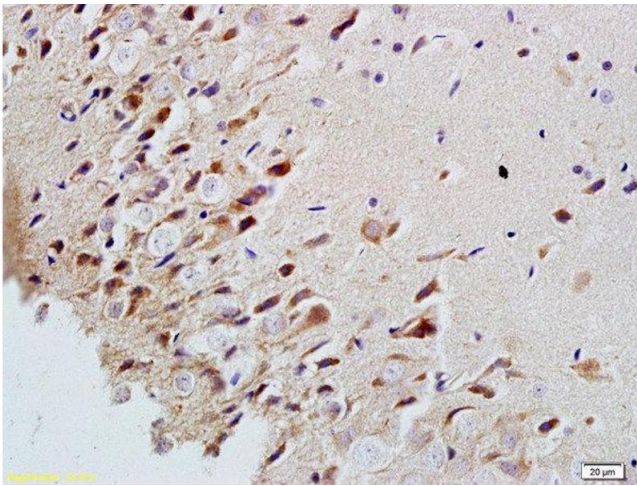
There are more publications referencing this product on: [Product page](#)

Images



Immunofluorescence

Image 1. Formalin-fixed and paraffin embedded rat brain labeled with Anti-MAP2/MAP-2A.B.C Polyclonal Antibody, Unconjugated (ABIN685567) followed by conjugation to the secondary antibody and DAPI staining



Immunohistochemistry (Paraffin-embedded Sections)

Image 2. Formalin-fixed and paraffin embedded rat brain labeled with Rabbit Anti-MAP2/MAP-2a.b.c Polyclonal Antibody, Unconjugated at 1:200 followed by conjugation to the secondary antibody and DAB staining