

Datasheet for ABIN685657

anti-Ghrelin antibody (AA 24-51)[Go to Product page](#)**1** Image

Overview

Quantity:	100 µL
Target:	Ghrelin (GHRL)
Binding Specificity:	AA 24-51
Reactivity:	Rat
Host:	Rabbit
Clonality:	Polyclonal
Conjugate:	This Ghrelin antibody is un-conjugated
Application:	Western Blotting (WB), ELISA, Immunofluorescence (Paraffin-embedded Sections) (IF (p)), Immunofluorescence (Cultured Cells) (IF (cc)), Immunohistochemistry (Paraffin-embedded Sections) (IHC (p)), Immunohistochemistry (Frozen Sections) (IHC (fro))

Product Details

Immunogen:	KLH conjugated synthetic peptide of mouse Ghrelin
Isotype:	IgG
Cross-Reactivity:	Rat
Predicted Reactivity:	Human,Mouse,Dog
Purification:	Purified by Protein A.

Target Details

Target:	Ghrelin (GHRL)
---------	----------------

Target Details

Alternative Name:	Ghrelin 28 (GHRL Products)
Background:	<p>Synonyms: Appetite-regulating hormone, growth hormone secretagogue, growth hormone-releasing peptide, motilin-related peptide, protein M46, grehlin</p> <p>Background: Ghrelin is an endogenous ligand for the growth hormone secretagogue receptor and is involved in regulating growth hormone release. Ghrelin is derived from a prehormone called preproghrelin, which also generates a second peptide called obestatin. Obestatin is an endogenous ligand for the orphan G protein-coupled receptor GPR39 and is involved in satiety and decreased food intake. Also known as Appetite regulating hormone, GHRL, Growth hormone releasing peptide, Growth hormone secretagogue, M46 protein, Motilin related peptide, MTLRP, Obestatin, Obestatin prehormone, PRO1066, UNQ524. Sequence notes: Gly-Ser-Ser-Phe-Leu-Ser-Pro- Glu-His-Gln-Lys-Ala-Gln-Gln-Arg-Lys-Glu- Ser-Lys-Lys-Pro-Pro-Ala-Lys-Leu-Gln-Pro- Arg (mo, rat)</p>
Gene ID:	58991
UniProt:	Q9EQX0
Pathways:	Positive Regulation of Peptide Hormone Secretion , Hormone Transport , Peptide Hormone Metabolism , Negative Regulation of Hormone Secretion , Synaptic Membrane , Feeding Behaviour

Application Details

Application Notes:	WB 1:300-5000 ELISA 1:500-1000 IHC-P 1:200-400 IHC-F 1:100-500 IF(IHC-P) 1:50-200 IF(IHC-F) 1:50-200 IF(ICC) 1:50-200
Restrictions:	For Research Use only

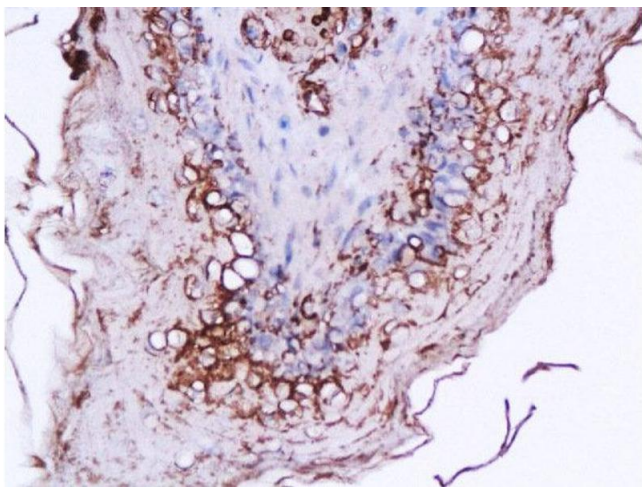
Handling

Format:	Liquid
Concentration:	1 µg/µL
Buffer:	0.01M TBS(pH 7.4) with 1 % BSA, 0.02 % Proclin300 and 50 % Glycerol.

Handling

Preservative:	ProClin
Precaution of Use:	This product contains ProClin: a POISONOUS AND HAZARDOUS SUBSTANCE, which should be handled by trained staff only.
Storage:	4 °C,-20 °C
Storage Comment:	Shipped at 4°C. Store at -20°C for one year. Avoid repeated freeze/thaw cycles.
Expiry Date:	12 months

Images



Immunohistochemistry (Paraffin-embedded Sections)

Image 1. Formalin-fixed and paraffin embedded rat stomach labeled with Anti-Ghrelin 28 Polyclonal Antibody, Unconjugated at 1:200 followed by conjugation to the secondary antibody and DAB staining