

Datasheet for ABIN685717  
**anti-GPER antibody (AA 251-375)**

7 Images

3 Publications

[Go to Product page](#)

## Overview

Quantity:	100 µL
Target:	GPER
Binding Specificity:	AA 251-375
Reactivity:	Human, Mouse, Rat
Host:	Rabbit
Clonality:	Polyclonal
Conjugate:	This GPER antibody is un-conjugated
Application:	Western Blotting (WB), Flow Cytometry (FACS), Immunofluorescence (Cultured Cells) (IF (cc)), Immunofluorescence (Paraffin-embedded Sections) (IF (p)), Immunohistochemistry (Paraffin-embedded Sections) (IHC (p)), ELISA, Immunohistochemistry (Frozen Sections) (IHC (fro))

## Product Details

Immunogen:	KLH conjugated synthetic peptide derived from human GPR30
Isotype:	IgG
Cross-Reactivity:	Human, Mouse, Rat
Predicted Reactivity:	Cow,Horse,Chicken,Rabbit
Purification:	Purified by Protein A.

## Target Details

Target:	GPER
---------	------

# Target Details

Alternative Name:	GPR30 ( <a href="#">GPER Products</a> )
Background:	<p>Synonyms: mER, CEPR, GPER, DRY12, FEG-1, GPR30, LERGU, LyGPR, CMKRL2, LERGU2, GPCR-Br, G-protein coupled estrogen receptor 1, Chemoattractant receptor-like 2, Flow-induced endothelial G-protein coupled receptor 1, G protein-coupled estrogen receptor 1, G-protein coupled receptor 30, IL8-related receptor DRY12, Lymphocyte-derived G-protein coupled receptor, Membrane estrogen receptor, GPER1</p> <p>Background: G-protein coupled estrogen receptor that binds to 17-beta-estradiol (E2) with high affinity, leading to rapid and transient activation of numerous intracellular signaling pathways. Stimulates cAMP production, calcium mobilization and tyrosine kinase Src inducing the release of heparin-bound epidermal growth factor (HB-EGF) and subsequent transactivation of the epidermal growth factor receptor (EGFR), activating downstream signaling pathways such as PI3K/Akt and ERK/MAPK. Mediates pleiotropic functions among others in the cardiovascular, endocrine, reproductive, immune and central nervous systems. Has a role in cardioprotection by reducing cardiac hypertrophy and perivascular fibrosis in a RAMP3-dependent manner. Regulates arterial blood pressure by stimulating vasodilation and reducing vascular smooth muscle and microvascular endothelial cell proliferation. Plays a role in blood glucose homeostasis contributing to the insulin secretion response by pancreatic beta cells. Triggers mitochondrial apoptosis during pachytene spermatocyte differentiation. Stimulates uterine epithelial cell proliferation. Enhances uterine contractility in response to oxytocin. Contributes to thymic atrophy by inducing apoptosis. Attenuates TNF-mediated endothelial expression of leukocyte adhesion molecules. Promotes neuritogenesis in developing hippocampal neurons. Plays a role in acute neuroprotection against NMDA-induced excitotoxic neuronal death. Increases firing activity and intracellular calcium oscillations in luteinizing hormone-releasing hormone (LHRH) neurons. Inhibits early osteoblast proliferation at growth plate during skeletal development. Inhibits mature adipocyte differentiation and lipid accumulation. Involved in the recruitment of beta-arrestin 2 ARRB2 at the plasma membrane in epithelial cells.</p>
Gene ID:	2852
UniProt:	<a href="#">Q99527</a>
Pathways:	<a href="#">EGFR Signaling Pathway</a> , <a href="#">Positive Regulation of Peptide Hormone Secretion</a> , <a href="#">Intracellular Steroid Hormone Receptor Signaling Pathway</a> , <a href="#">Steroid Hormone Mediated Signaling Pathway</a> , <a href="#">Carbohydrate Homeostasis</a> , <a href="#">cAMP Metabolic Process</a> , <a href="#">Regulation of G-Protein Coupled Receptor Protein Signaling</a> , <a href="#">Positive Regulation of Endopeptidase Activity</a> , <a href="#">Regulation of Carbohydrate Metabolic Process</a>

## Application Details

Application Notes:	WB 1:300-5000
	ELISA 1:500-1000
	FCM 1:20-100
	IHC-P 1:200-400
	IHC-F 1:100-500
	IF(IHC-P) 1:50-200
	IF(IHC-F) 1:50-200
	IF(ICC) 1:50-200

Restrictions:	For Research Use only
---------------	-----------------------

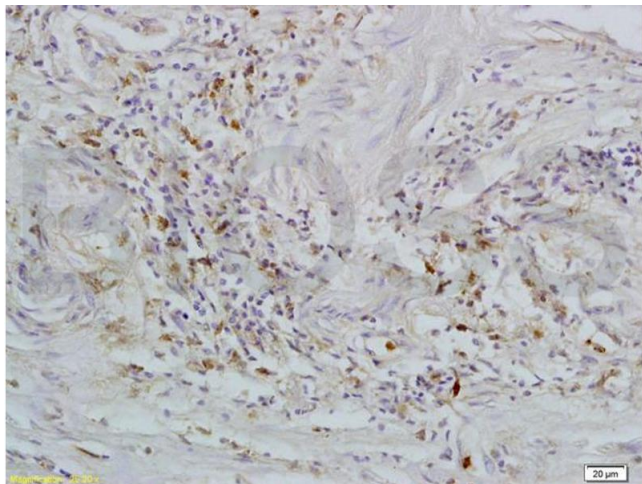
## Handling

Format:	Liquid
Concentration:	1 µg/µL
Buffer:	0.01M TBS( pH 7.4) with 1 % BSA, 0.02 % Proclin300 and 50 % Glycerol.
Preservative:	ProClin
Precaution of Use:	This product contains ProClin: a POISONOUS AND HAZARDOUS SUBSTANCE, which should be handled by trained staff only.
Storage:	4 °C, -20 °C
Storage Comment:	Shipped at 4°C. Store at -20°C for one year. Avoid repeated freeze/thaw cycles.
Expiry Date:	12 months

## Publications

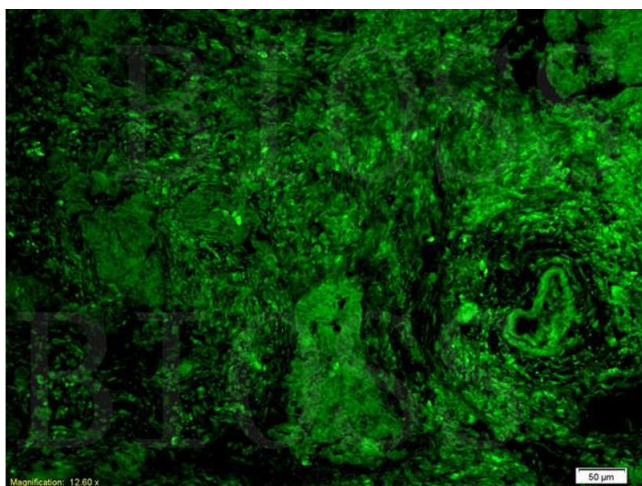
Product cited in:	Wang, Alencar, Lin, Sun, Sudo, Zapata-Sudo, Lowe, Groban: "Activation of GPR30 improves exercise capacity and skeletal muscle strength in senescent female Fischer344 × Brown Norway rats." in: <b>Biochemical and biophysical research communications</b> , Vol. 475, Issue 1, pp. 81-6, (2016) ( <a href="#">PubMed</a> ).
	Wang, Zhao, Lin, Groban: "Activation of GPR30 inhibits cardiac fibroblast proliferation." in: <b>Molecular and cellular biochemistry</b> , Vol. 405, Issue 1-2, pp. 135-48, (2015) ( <a href="#">PubMed</a> ).
	Zhao, Wang, Lin, Groban: "GPR30 decreases cardiac chymase/angiotensin II by inhibiting local mast cell number." in: <b>Biochemical and biophysical research communications</b> , Vol. 459, Issue

## Images



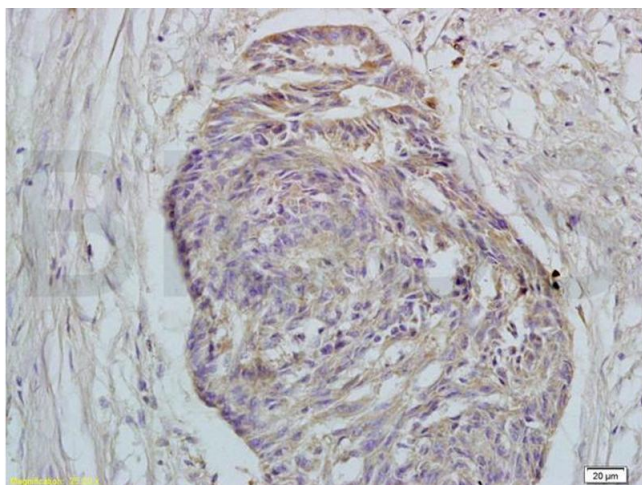
### Immunohistochemistry

**Image 1.** Formalin-fixed and paraffin embedded human rectal carcinoma tissue labeled with Rabbit Anti-GPR30 Polyclonal Antibody (ABIN685717) at 1:200 followed by conjugation to the secondary antibody and DAB staining.



### Immunofluorescence

**Image 2.** Formalin-fixed and paraffin embedded human rectal carcinoma tissue labeled with Rabbit Anti-GPR30 Polyclonal Antibody (ABIN685717) at 1:200 followed by conjugation to the secondary antibody and DAB staining



### Immunohistochemistry

**Image 3.** Formalin-fixed and paraffin embedded human rectal carcinoma tissue labeled with Rabbit Anti-GPR30 Polyclonal Antibody (ABIN685717) at 1:200 followed by conjugation to the secondary antibody and DAB staining.

Please check the [product details page](#) for more images. Overall 7 images are available for ABIN685717.