



[Go to Product page](#)

Datasheet for ABIN685747

anti-SLUG antibody (AA 5-120)

3 Images

3 Publications

Overview

Quantity:	100 µL
Target:	SLUG
Binding Specificity:	AA 5-120
Reactivity:	Human, Rat, Rabbit
Host:	Rabbit
Clonality:	Polyclonal
Conjugate:	This SLUG antibody is un-conjugated
Application:	Western Blotting (WB), Immunofluorescence (Cultured Cells) (IF (cc)), Immunofluorescence (Paraffin-embedded Sections) (IF (p)), ELISA, Immunohistochemistry (Paraffin-embedded Sections) (IHC (p)), Immunohistochemistry (Frozen Sections) (IHC (fro))

Product Details

Immunogen:	KLH conjugated synthetic peptide derived from human Slug
Isotype:	IgG
Cross-Reactivity:	Human, Rabbit, Rat
Predicted Reactivity:	Mouse,Dog,Cow,Pig,Chicken
Purification:	Purified by Protein A.

Target Details

Target:	SLUG
---------	------

Target Details

Abstract: [SLUG Products](#)

Background: Synonyms: SLUG, WS2D, SLUGH1, SNAIL2, Zinc finger protein SNAI2, Neural crest transcription factor Slug, Protein snail homolog 2, SNAI2, SLUGH

Background: Transcriptional repressor that modulates both activator-dependent and basal transcription. Involved in the generation and migration of neural crest cells. Plays a role in mediating RAF1-induced transcriptional repression of the TJ protein, occludin (OCLN) and subsequent oncogenic transformation of epithelial cells (By similarity). Represses BRCA2 expression by binding to its E2-box-containing silencer and recruiting CTBP1 and HDAC1 in breast cells. In epidermal keratinocytes, binds to the E-box in ITGA3 promoter and represses its transcription. Involved in the regulation of ITGB1 and ITGB4 expression and cell adhesion and proliferation in epidermal keratinocytes. Binds to E-box2 domain of BSG and activates its expression during TGFβ1-induced epithelial-mesenchymal transition (EMT) in hepatocytes. Represses E-Cadherin/CDH1 transcription via E-box elements. Involved in osteoblast maturation. Binds to RUNX2 and SOX9 promoters and may act as a positive and negative transcription regulator, respectively, in osteoblasts. Binds to CXCL12 promoter via E-box regions in mesenchymal stem cells and osteoblasts. Plays an essential role in TWIST1-induced EMT and its ability to promote invasion and metastasis.

Gene ID: 6591

UniProt: [O43623](#)

Application Details

Application Notes: WB 1:300-5000
ELISA 1:500-1000
IHC-P 1:200-400
IHC-F 1:100-500
IF(IHC-P) 1:50-200
IF(IHC-F) 1:50-200
IF(ICC) 1:50-200

Restrictions: For Research Use only

Handling

Format: Liquid

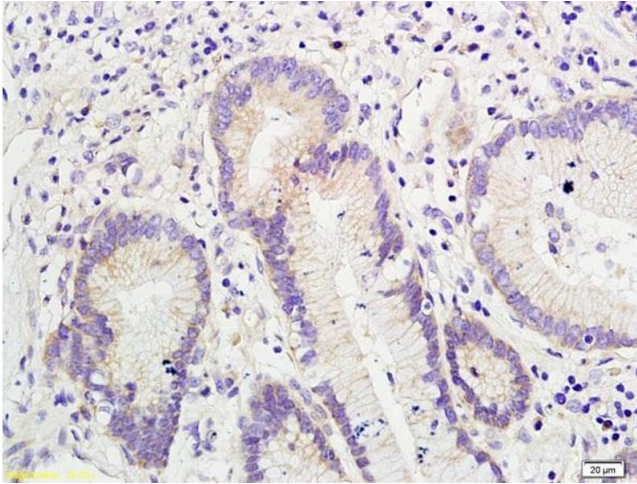
Concentration: 1 µg/µL

Handling

Buffer:	0.01M TBS(pH 7.4) with 1 % BSA, 0.02 % Proclin300 and 50 % Glycerol.
Preservative:	ProClin
Precaution of Use:	This product contains ProClin: a POISONOUS AND HAZARDOUS SUBSTANCE, which should be handled by trained staff only.
Storage:	4 °C,-20 °C
Storage Comment:	Shipped at 4°C. Store at -20°C for one year. Avoid repeated freeze/thaw cycles.
Expiry Date:	12 months

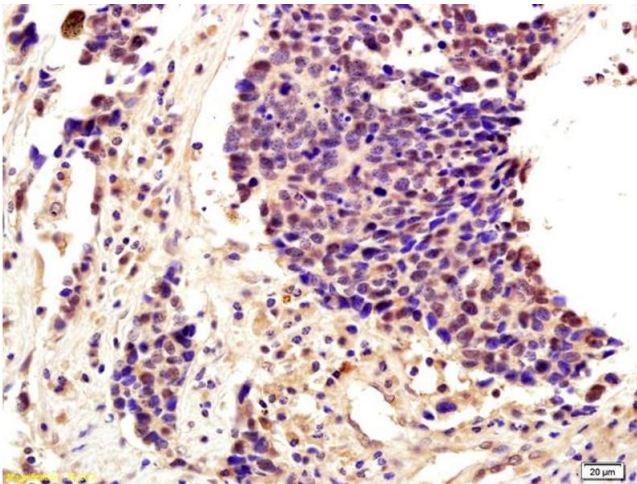
Publications

Product cited in:	<p>Bai, Chen, Wei, Li, Lin, Chen, Li, Du, Man, Zhang: "The zinc-finger transcriptional factor Slug transcriptionally downregulates ERα by recruiting lysine-specific demethylase 1 in human breast cancer." in: Oncogenesis, Vol. 6, Issue 5, pp. e330, (2017) (PubMed).</p> <p>Kong, Guo, Liu, Zhao, Feng, Liu, Wang, Li: "Overexpression of SDF-1 activates the NF-κB pathway to induce epithelial to mesenchymal transition and cancer stem cell-like phenotypes of breast cancer cells." in: International journal of oncology, Vol. 48, Issue 3, pp. 1085-94, (2016) (PubMed).</p> <p>Ge, Cao, Wang, Sun, Sun, Han, Cui, Liu: "Overexpression of Livin promotes migration and invasion of colorectal cancer cells by induction of epithelial-mesenchymal transition via NF-κB activation." in: OncoTargets and therapy, Vol. 9, pp. 1011-21, (2016) (PubMed).</p>
-------------------	---



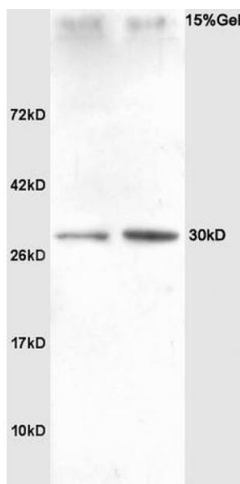
Immunohistochemistry

Image 1. Formalin-fixed and paraffin embedded human colon cancer labeled with Anti-SNAI2/SLUG Polyclonal Antibody, Unconjugated (ABIN685747) followed by conjugation to the secondary antibody and DAB staining



Immunohistochemistry

Image 2. Formalin-fixed and paraffin embedded human lung cancer labeled with Anti-SNAI2/SLUG Polyclonal Antibody, Unconjugated (ABIN685747) followed by conjugation to the secondary antibody and DAB staining



SDS-PAGE

Image 3. Lane 1: rat heart Lane 2: rat liver lysates probed with Anti SNAI2/SLUG Polyclonal Antibody, Unconjugated (ABIN685747) at 1:200 in 4 °C. Followed by conjugation to secondary antibody at 1:3000 90min in 37 °C. Predicted band 30kD. Observed band size: 30kD.