

Datasheet for ABIN685762
anti-CD13 antibody (AA 344-444)

3 Images

1 Publication

[Go to Product page](#)

Overview

Quantity:	100 µL
Target:	CD13 (ANPEP)
Binding Specificity:	AA 344-444
Reactivity:	Human, Mouse
Host:	Rabbit
Clonality:	Polyclonal
Conjugate:	This CD13 antibody is un-conjugated
Application:	Flow Cytometry (FACS), Western Blotting (WB), ELISA, Immunohistochemistry (Frozen Sections) (IHC (fro)), Immunohistochemistry (Paraffin-embedded Sections) (IHC (p)), Immunofluorescence (Cultured Cells) (IF (cc)), Immunofluorescence (Paraffin-embedded Sections) (IF (p))

Product Details

Immunogen:	KLH conjugated synthetic peptide derived from human CD13
Isotype:	IgG
Cross-Reactivity:	Human, Mouse
Predicted Reactivity:	Rat
Purification:	Purified by Protein A.

Target Details

Target:	CD13 (ANPEP)
---------	--------------

Target Details

Abstract:	ANPEP Products
Background:	<p>Synonyms: APN, CD13, LAP1, P150, PEPN, GP150, Aminopeptidase N, AP-N, hAPN, Alanyl aminopeptidase, Aminopeptidase M, AP-M, Microsomal aminopeptidase, Myeloid plasma membrane glycoprotein CD13, ANPEP</p> <p>Background: Broad specificity aminopeptidase. Plays a role in the final digestion of peptides generated from hydrolysis of proteins by gastric and pancreatic proteases. May play a critical role in the pathogenesis of cholesterol gallstone disease. May be involved in the metabolism of regulatory peptides of diverse cell types, responsible for the processing of peptide hormones, such as angiotensin III and IV, neuropeptides, and chemokines. Found to cleave antigen peptides bound to major histocompatibility complex class II molecules of presenting cells and to degrade neurotransmitters at synaptic junctions. Is also implicated as a regulator of IL-8 bioavailability in the endometrium, and therefore may contribute to the regulation of angiogenesis. Is used as a marker for acute myeloid leukemia and plays a role in tumor invasion. In case of human coronavirus 229E (HCoV-229E) infection, serves as receptor for HCoV-229E spike glycoprotein. Mediates as well human cytomegalovirus (HCMV) infection.</p>
Gene ID:	290
UniProt:	P15144
Pathways:	Peptide Hormone Metabolism , Regulation of Systemic Arterial Blood Pressure by Hormones

Application Details

Application Notes:	WB 1:300-5000 ELISA 1:500-1000 FCM 1:20-100 IHC-P 1:200-400 IHC-F 1:100-500 IF(IHC-P) 1:50-200 IF(IHC-F) 1:50-200 IF(ICC) 1:50-200
Restrictions:	For Research Use only

Handling

Format:	Liquid
Concentration:	1 µg/µL

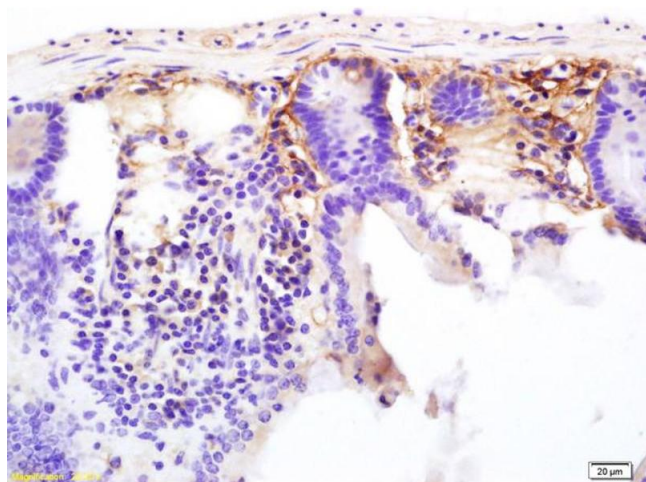
Handling

Buffer:	0.01M TBS(pH 7.4) with 1 % BSA, 0.02 % Proclin300 and 50 % Glycerol.
Preservative:	ProClin
Precaution of Use:	This product contains ProClin: a POISONOUS AND HAZARDOUS SUBSTANCE, which should be handled by trained staff only.
Storage:	4 °C,-20 °C
Storage Comment:	Shipped at 4°C. Store at -20°C for one year. Avoid repeated freeze/thaw cycles.
Expiry Date:	12 months

Publications

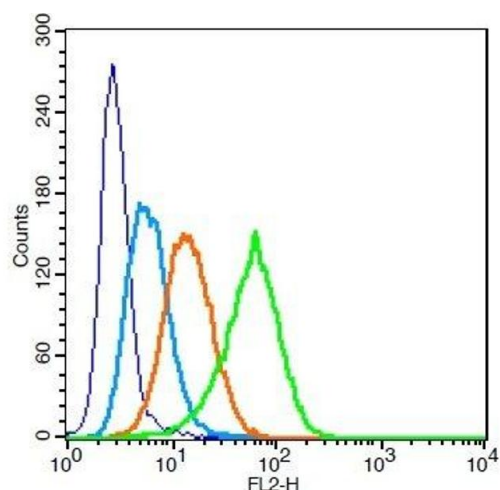
Product cited in:	Erikci, Ucar, Yabanoglu-Ciftci: "Role of serotonin in the regulation of renal proximal tubular epithelial cells." in: Renal failure , Vol. 38, Issue 7, pp. 1141-50, (2016) (PubMed).
-------------------	--

Images



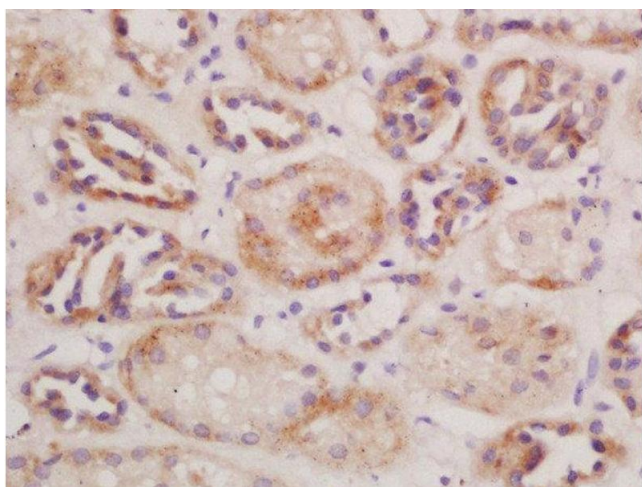
Immunohistochemistry

Image 1. Formalin-fixed and paraffin embedded mouse colon labeled with Anti-CD13/APN/ANPEN Polyclonal Antibody, Unconjugated (ABIN685762) at 1:200 followed by conjugation to the secondary antibody and DAB staining.



Flow Cytometry

Image 2. Human U937 probed with CD13/APN/ANPEN Polyclonal Antibody at 1:100 for 30 minutes followed by incubation with a PE conjugated secondary (green) for 30 minutes compared to control cells (blue), secondary only (light blue) and isotype control (orange).



Immunohistochemistry (Paraffin-embedded Sections)

Image 3. Formalin-fixed and paraffin embedded mouse kidney labeled with Rabbit Anti-CD13/APN/ANPEN Polyclonal Antibody, Unconjugated at 1:200 followed by conjugation to the secondary antibody and DAB staining