



Datasheet for ABIN685927

anti-KLF6 antibody



[Go to Product page](#)

1 Image

Overview

Quantity:	100 µL
Target:	KLF6
Reactivity:	Human, Mouse, Rat
Host:	Rabbit
Clonality:	Polyclonal
Conjugate:	This KLF6 antibody is un-conjugated
Application:	Western Blotting (WB), Immunohistochemistry (Paraffin-embedded Sections) (IHC (p))

Product Details

Immunogen:	KLH conjugated synthetic peptide derived from human KLF6
Isotype:	IgG
Cross-Reactivity:	Human, Mouse, Rat
Purification:	Purified by Protein A.

Target Details

Target:	KLF6
Alternative Name:	Klf6/Pac1 (KLF6 Products)
Background:	Synonyms: Kruppel-like factor 6, B cell derived protein 1, BCD1, COPEB, Core promoter element-binding protein, CPBP, GC rich sites binding factor GBF, Krueppel-like factor 6, Proto-oncogene BCD1, Transcription factor Zf9, Zf9, CBA1, DKFZp686N0199, GBF, PAC1, ST12, KLF6_HUMAN. Background: KLF6 is a nuclear protein that has three zinc fingers at the end of its C-terminal

Target Details

domain, a serine/threonine-rich central region, and an acidic domain lying within the N-terminal region. The zinc fingers of this protein are responsible for the specific DNA binding with the guanine-rich core promoter elements. The central region might be involved in activation or posttranslational regulatory pathways, and the acidic N-terminal domain might play an important role in the process of transcriptional activation. It is capable of activating transcription approximately 4-fold either on homologous or heterologous promoters. The DNA binding and transcriptional activity of this protein, in conjunction with its expression pattern, suggests that this protein may participate in the regulation and/or maintenance of the basal expression of pregnancy-specific glycoprotein genes and possibly other TATA box-less genes. Two transcript variants encoding the same protein have been found for this gene.

Gene ID: 1316

Application Details

Application Notes: WB: 1:100-1000, IHC-P: 1:100-500, IF(IHC-P): 1:50-200
Optimal working dilution should be determined by the investigator.

Restrictions: For Research Use only

Handling

Format: Liquid

Concentration: 1 µg/µL

Buffer: Aqueous buffered solution containing 1 % BSA, 50 % glycerol and 0.09 % sodium azide.

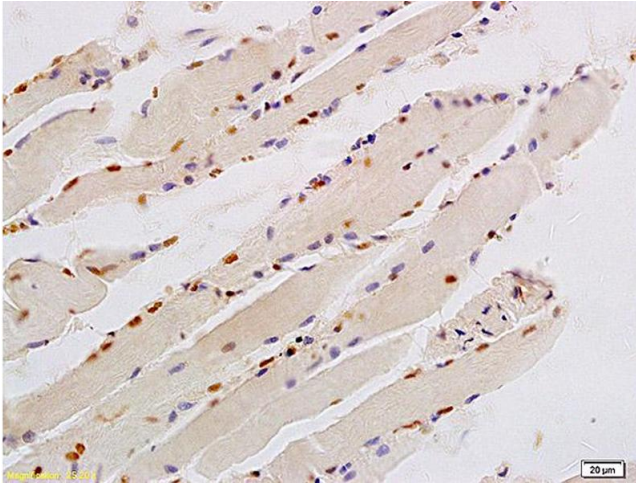
Preservative: Sodium azide

Precaution of Use: This product contains Sodium azide: a POISONOUS AND HAZARDOUS SUBSTANCE which should be handled by trained staff only.

Storage: -20 °C

Storage Comment: Store at -20°C for 12 months.

Expiry Date: 12 months



Immunohistochemistry

Image 1. Formalin-fixed and paraffin embedded human smooth muscle labeled with Anti-KLF6/PAC1 Polyclonal Antibody, Unconjugated (ABIN685927) at 1:200 followed by conjugation to the secondary antibody and DAB staining.