

Datasheet for ABIN685972  
**anti-ELK1 antibody (AA 301-428)**



[Go to Product page](#)

1 Image

## Overview

Quantity:	100 µL
Target:	ELK1
Binding Specificity:	AA 301-428
Reactivity:	Human, Mouse, Rat
Host:	Rabbit
Clonality:	Polyclonal
Conjugate:	This ELK1 antibody is un-conjugated
Application:	Western Blotting (WB), ELISA, Immunohistochemistry (Paraffin-embedded Sections) (IHC (p)), Immunofluorescence (Cultured Cells) (IF (cc)), Immunofluorescence (Paraffin-embedded Sections) (IF (p)), Immunohistochemistry (Frozen Sections) (IHC (fro))

## Product Details

Immunogen:	KLH conjugated synthetic peptide derived from human ELK1
Isotype:	IgG
Cross-Reactivity:	Human, Mouse, Rat
Predicted Reactivity:	Cow,Horse
Purification:	Purified by Protein A.

## Target Details

Target:	ELK1
---------	------

## Target Details

---

Alternative Name:	<a href="#">ELK1 (ELK1 Products)</a>
Background:	Synonyms: ETS domain-containing protein Elk-1, ELK1 Background: Stimulates transcription. Binds to purine-rich DNA sequences. Can form a ternary complex with the serum response factor and the ETS and SRF motifs of the fos serum response element.
Gene ID:	2002
UniProt:	<a href="#">P19419</a>
Pathways:	<a href="#">MAPK Signaling</a> , <a href="#">Neurotrophin Signaling Pathway</a> , <a href="#">Activation of Innate immune Response</a> , <a href="#">Toll-Like Receptors Cascades</a> , <a href="#">Signaling of Hepatocyte Growth Factor Receptor</a> , <a href="#">BCR Signaling</a>

## Application Details

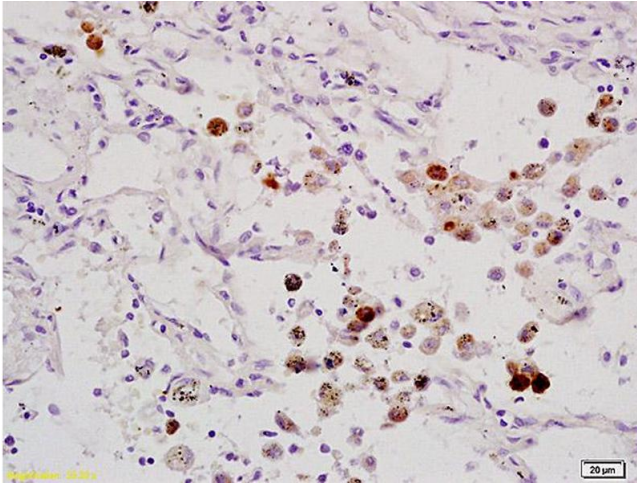
---

Application Notes:	WB 1:300-5000 ELISA 1:500-1000 IHC-P 1:200-400 IHC-F 1:100-500 IF(IHC-P) 1:50-200 IF(IHC-F) 1:50-200 IF(ICC) 1:50-200
Restrictions:	For Research Use only

## Handling

---

Format:	Liquid
Concentration:	1 µg/µL
Buffer:	0.01M TBS( pH 7.4) with 1 % BSA, 0.02 % Proclin300 and 50 % Glycerol.
Preservative:	ProClin
Precaution of Use:	This product contains ProClin: a POISONOUS AND HAZARDOUS SUBSTANCE, which should be handled by trained staff only.
Storage:	4 °C, -20 °C
Storage Comment:	Shipped at 4°C. Store at -20°C for one year. Avoid repeated freeze/thaw cycles.
Expiry Date:	12 months



### Immunohistochemistry

**Image 1.** Formalin-fixed and paraffin embedded human lung carcinoma labeled with Anti-ELK1 Polyclonal Antibody, Unconjugated (ABIN685972) at 1:200 followed by conjugation to the secondary antibody and DAB staining.