

Datasheet for ABIN686017  
**anti-SRF antibody (AA 101-250)**

## 4 Images

[Go to Product page](#)

## Overview

Quantity:	100 µL
Target:	SRF
Binding Specificity:	AA 101-250
Reactivity:	Human, Mouse, Rat
Host:	Rabbit
Clonality:	Polyclonal
Conjugate:	This SRF antibody is un-conjugated
Application:	Western Blotting (WB), ELISA, Immunofluorescence (Paraffin-embedded Sections) (IF (p)), Immunohistochemistry (Paraffin-embedded Sections) (IHC (p)), Immunofluorescence (Cultured Cells) (IF (cc)), Immunohistochemistry (Frozen Sections) (IHC (fro))

## Product Details

Immunogen:	KLH conjugated synthetic peptide derived from human SRF
Isotype:	IgG
Cross-Reactivity:	Human, Mouse, Rat
Predicted Reactivity:	Dog,Cow,Pig
Purification:	Purified by Protein A.

## Target Details

Target:	SRF
---------	-----

## Target Details

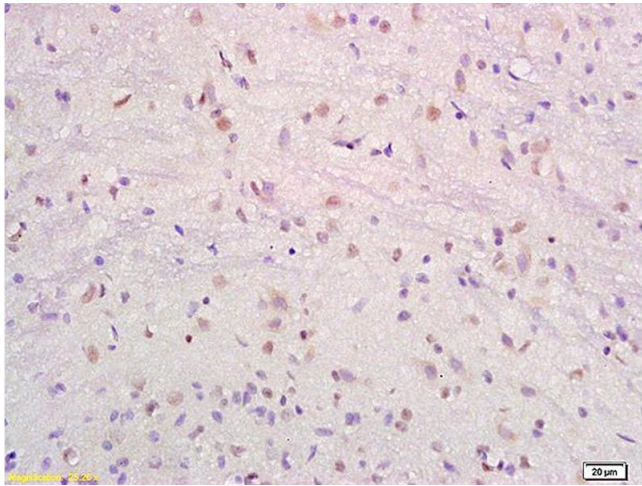
Alternative Name:	SRF ( <a href="#">SRF Products</a> )
Background:	Synonyms: MCM1, Serum response factor, SRF Background: SRF is a transcription factor that binds to the serum response element (SRE), a short sequence of dyad symmetry located 300 bp to the 5' of the site of transcription initiation of some genes (such as FOS). Required for cardiac differentiation and maturation.
Gene ID:	6722
UniProt:	<a href="#">P11831</a>

## Application Details

Application Notes:	WB 1:300-5000 ELISA 1:500-1000 IHC-P 1:200-400 IHC-F 1:100-500 IF(IHC-P) 1:50-200 IF(IHC-F) 1:50-200 IF(ICC) 1:50-200
Restrictions:	For Research Use only

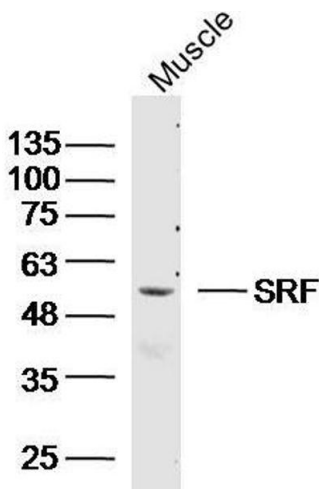
## Handling

Format:	Liquid
Concentration:	1 µg/µL
Buffer:	0.01M TBS( pH 7.4) with 1 % BSA, 0.02 % Proclin300 and 50 % Glycerol.
Preservative:	ProClin
Precaution of Use:	This product contains ProClin: a POISONOUS AND HAZARDOUS SUBSTANCE, which should be handled by trained staff only.
Storage:	4 °C,-20 °C
Storage Comment:	Shipped at 4°C. Store at -20°C for one year. Avoid repeated freeze/thaw cycles.
Expiry Date:	12 months



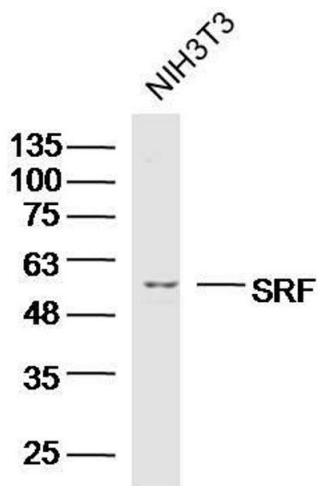
### Immunohistochemistry

**Image 1.** Formalin-fixed and paraffin embedded rat brain labeled with Anti-SRF/SAP2/MCM1 Polyclonal Antibody, Unconjugated (ABIN686017) at 1:200 followed by conjugation to the secondary antibody and DAB staining.



### Western Blotting

**Image 2.** Mouse muscle lysates probed with SRF Polyclonal Antibody, unconjugated at 1:300 overnight at 4°C followed by a conjugated secondary antibody at 1:10000 for 90 minutes at 37°C.



### Western Blotting

**Image 3.** Mouse NIH/3T3 cells probed with SRF Polyclonal Antibody, unconjugated at 1:300 overnight at 4°C followed by a conjugated secondary antibody at 1:10000 for 90 minutes at 37°C.

Please check the [product details page](#) for more images. Overall 4 images are available for ABIN686017.