

Datasheet for ABIN686062

anti-IRF1 antibody[Go to Product page](#)**1** Image

Overview

Quantity:	100 µL
Target:	IRF1
Reactivity:	Human, Mouse, Rat
Host:	Rabbit
Clonality:	Polyclonal
Conjugate:	This IRF1 antibody is un-conjugated
Application:	Western Blotting (WB), Immunofluorescence (Paraffin-embedded Sections) (IF (p)), Immunohistochemistry (Paraffin-embedded Sections) (IHC (p))

Product Details

Immunogen:	KLH conjugated synthetic peptide derived from human IRF-1/MAR
Isotype:	IgG
Cross-Reactivity:	Human, Mouse, Rat
Purification:	Purified by Protein A.

Target Details

Target:	IRF1
Alternative Name:	Irf-1 (IRF1 Products)
Background:	Synonyms: interferon regulatory factor 1, IRF 1, IRF1, IRF-1, MAR1, IRF1_HUMAN. Background: IRF1 encodes interferon regulatory factor 1, a member of the interferon regulatory transcription factor (IRF) family. IRF1 serves as an activator of interferons alpha and beta

Target Details

transcription, and in mouse it has been shown to be required for double-stranded RNA induction of these genes. IRF1 also functions as a transcription activator of genes induced by interferons alpha, beta, and gamma. Further, IRF1 has been shown to play roles in regulating apoptosis and tumor-suppression.

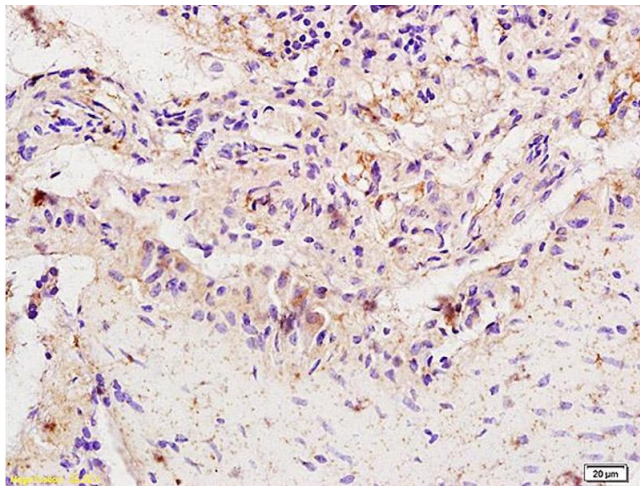
Gene ID:	3659
Pathways:	Interferon-gamma Pathway , Response to Growth Hormone Stimulus , Positive Regulation of Immune Effector Process , Hepatitis C , Autophagy

Application Details

Application Notes:	WB(1:100-1000), IHC-P(1:100-500), IF(IHC-P)(1:50-200)
Restrictions:	For Research Use only

Handling

Format:	Liquid
Concentration:	1 µg/µL
Buffer:	Aqueous buffered solution containing 1 % BSA, 50 % glycerol and 0.09 % sodium azide.
Preservative:	Sodium azide
Precaution of Use:	This product contains Sodium azide: a POISONOUS AND HAZARDOUS SUBSTANCE which should be handled by trained staff only.
Storage:	-20 °C
Storage Comment:	Store at -20°C for 12 months.
Expiry Date:	12 months



Immunohistochemistry

Image 1. Formalin-fixed and paraffin embedded rat colitis labeled with Anti-IRF-1/MAR1 Polyclonal Antibody, Unconjugated (ABIN686062) at 1:200 followed by conjugation to the secondary antibody and DAB staining.