

Datasheet for ABIN686137
anti-HSF2 antibody (AA 401-536)

3 Images

[Go to Product page](#)

Overview

| | |
|----------------------|---|
| Quantity: | 100 µL |
| Target: | HSF2 |
| Binding Specificity: | AA 401-536 |
| Reactivity: | Human, Rat |
| Host: | Rabbit |
| Clonality: | Polyclonal |
| Conjugate: | This HSF2 antibody is un-conjugated |
| Application: | Western Blotting (WB), ELISA, Immunofluorescence (Cultured Cells) (IF (cc)), Immunofluorescence (Paraffin-embedded Sections) (IF (p)), Immunohistochemistry (Paraffin- embedded Sections) (IHC (p)), Immunohistochemistry (Frozen Sections) (IHC (fro)) |

Product Details

| | |
|-----------------------|---|
| Immunogen: | KLH conjugated synthetic peptide derived from human HSTF2 |
| Isotype: | IgG |
| Specificity: | Belongs to the HSF family |
| Cross-Reactivity: | Human, Rat |
| Predicted Reactivity: | Mouse |
| Purification: | Purified by Protein A. |

Target Details

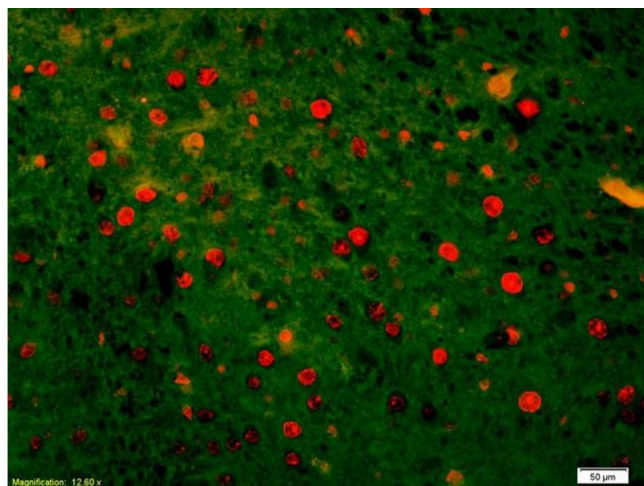
| | |
|-------------------|--|
| Target: | HSF2 |
| Alternative Name: | HSTF2 (HSF2 Products) |
| Background: | <p>Synonyms: HSF 2, HSTF 2, Heat shock factor protein 2, Heat shock transcription factor 2, HSF2, HSTF2</p> <p>Background: DNA-binding protein that specifically binds heat shock promoter elements (HSE) and activates transcription. In higher eukaryotes, HSF is unable to bind to the HSE unless the cells are heat shocked.</p> |
| Gene ID: | 3298 |
| UniProt: | Q03933 |

Application Details

| | |
|--------------------|--|
| Application Notes: | <p>WB 1:300-5000</p> <p>ELISA 1:500-1000</p> <p>IHC-P 1:200-400</p> <p>IHC-F 1:100-500</p> <p>IF(IHC-P) 1:50-200</p> <p>IF(IHC-F) 1:50-200</p> <p>IF(ICC) 1:50-200</p> |
| Restrictions: | For Research Use only |

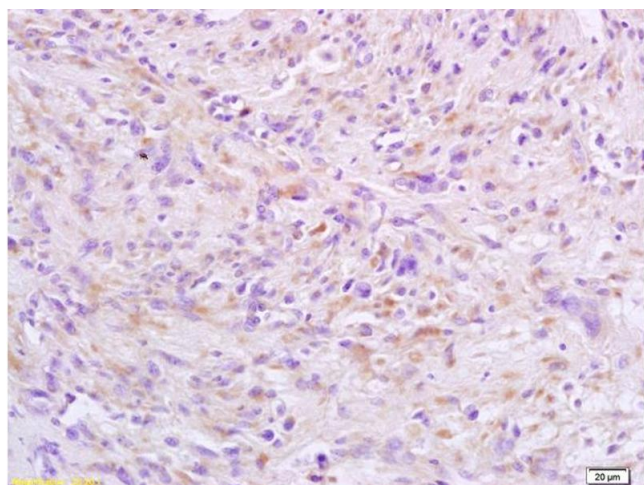
Handling

| | |
|--------------------|--|
| Format: | Liquid |
| Concentration: | 1 µg/µL |
| Buffer: | 0.01M TBS(pH 7.4) with 1 % BSA, 0.02 % Proclin300 and 50 % Glycerol. |
| Preservative: | ProClin |
| Precaution of Use: | This product contains ProClin: a POISONOUS AND HAZARDOUS SUBSTANCE, which should be handled by trained staff only. |
| Storage: | 4 °C, -20 °C |
| Storage Comment: | Shipped at 4°C. Store at -20°C for one year. Avoid repeated freeze/thaw cycles. |
| Expiry Date: | 12 months |



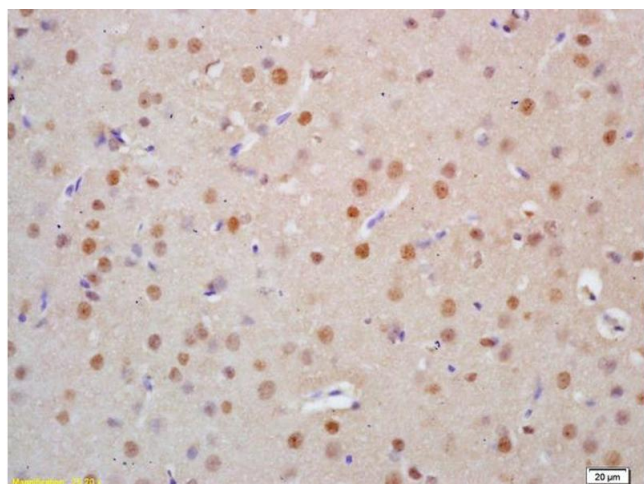
Immunofluorescence

Image 1. Formalin-fixed and paraffin-embedded rat brain labeled with Anti-HSTF2/HSF2 Polyclonal Antibody, Unconjugated (ABIN686137) 1:200, overnight at 4°C, The secondary antibody was Goat Anti-Rabbit IgG, Cy3 conjugated used at 1:200 dilution for 40 minutes at 37°C.



Immunohistochemistry

Image 2. Formalin-fixed and paraffin embedded human cervical carcinoma Rabbit Anti-HSTF2/HSF2 Polyclonal Antibody, Unconjugated (ABIN686137) at 1:200, followed by conjugation to the secondary antibody and DAB staining



Immunohistochemistry

Image 3. Formalin-fixed and paraffin embedded rat brain tissue labeled Anti-HSTF2/HSF2 Polyclonal Antibody, Unconjugated (ABIN686137) at 1:200, followed by conjugation to the secondary antibody and DAB staining