

Datasheet for ABIN686152
anti-CTBP1 antibody (AA 351-440)

2 Images

[Go to Product page](#)

Overview

Quantity:	100 µL
Target:	CTBP1
Binding Specificity:	AA 351-440
Reactivity:	Mouse
Host:	Rabbit
Clonality:	Polyclonal
Conjugate:	This CTBP1 antibody is un-conjugated
Application:	ELISA, Immunohistochemistry (Paraffin-embedded Sections) (IHC (p)), Immunofluorescence (Cultured Cells) (IF (cc)), Immunofluorescence (Paraffin-embedded Sections) (IF (p)), Immunohistochemistry (Frozen Sections) (IHC (fro))

Product Details

Immunogen:	KLH conjugated synthetic peptide derived from human CTBP1
Isotype:	IgG
Cross-Reactivity:	Mouse
Predicted Reactivity:	Human,Rat,Cow,Chicken
Purification:	Purified by Protein A.

Target Details

Target:	CTBP1
---------	-------

Target Details

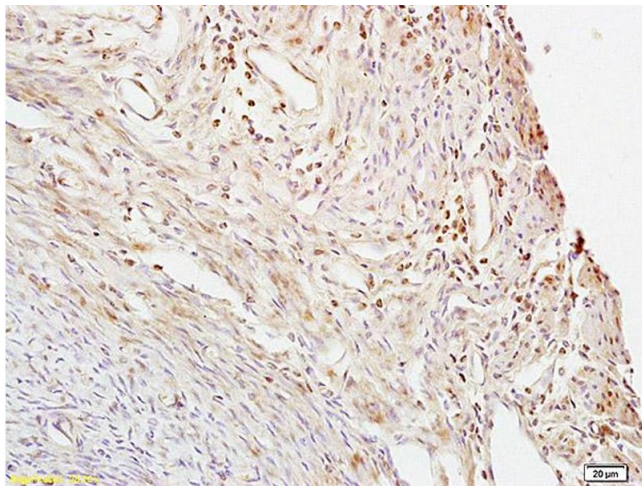
Alternative Name:	CTBP1 (CTBP1 Products)
Background:	Synonyms: BARS, C-terminal-binding protein 1, CtBP1, CTBP Background: Corepressor targeting diverse transcription regulators such as GLIS2 or BCL6. Has dehydrogenase activity. Involved in controlling the equilibrium between tubular and stacked structures in the Golgi complex. Functions in brown adipose tissue (BAT) differentiation.
Gene ID:	1487
UniProt:	Q13363
Pathways:	Retinoic Acid Receptor Signaling Pathway

Application Details

Application Notes:	ELISA 1:500-1000 IHC-P 1:200-400 IHC-F 1:100-500 IF(IHC-P) 1:50-200 IF(IHC-F) 1:50-200 IF(ICC) 1:50-200
Restrictions:	For Research Use only

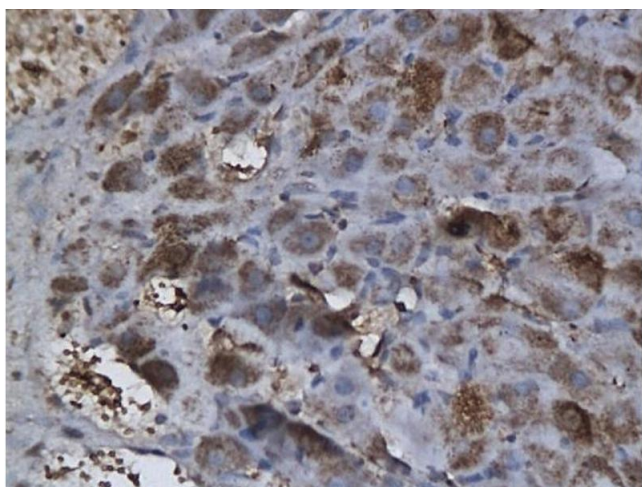
Handling

Format:	Liquid
Concentration:	1 µg/µL
Buffer:	0.01M TBS(pH 7.4) with 1 % BSA, 0.02 % Proclin300 and 50 % Glycerol.
Preservative:	ProClin
Precaution of Use:	This product contains ProClin: a POISONOUS AND HAZARDOUS SUBSTANCE, which should be handled by trained staff only.
Storage:	4 °C,-20 °C
Storage Comment:	Shipped at 4°C. Store at -20°C for one year. Avoid repeated freeze/thaw cycles.
Expiry Date:	12 months



Immunohistochemistry

Image 1. Formalin-fixed and paraffin embedded mouse uterus labeled with Anti- CTBP1 Polyclonal Antibody, Unconjugated (ABIN686152) at 1:200 followed by conjugation to the secondary antibody and DAB staining.



Immunohistochemistry

Image 2. Formalin-fixed and paraffin embedded rat ovary labeled with Anti-CTBP1 Polyclonal Antibody, unconjugated (ABIN686152) followed by incubation with conjugated secondary antibody and DAB staining