

Datasheet for ABIN686287

anti-MC1 Receptor antibody (AA 271-317)**2** Images**1** Publication[Go to Product page](#)

Overview

Quantity:	100 µL
Target:	MC1 Receptor (MC1R)
Binding Specificity:	AA 271-317
Reactivity:	Human, Mouse
Host:	Rabbit
Clonality:	Polyclonal
Conjugate:	This MC1 Receptor antibody is un-conjugated
Application:	Western Blotting (WB), ELISA, Immunofluorescence (Cultured Cells) (IF (cc)), Immunofluorescence (Paraffin-embedded Sections) (IF (p)), Flow Cytometry (FACS), Immunohistochemistry (Paraffin-embedded Sections) (IHC (p)), Immunohistochemistry (Frozen Sections) (IHC (fro))

Product Details

Immunogen:	KLH conjugated synthetic peptide derived from mouse MC1R
Isotype:	IgG
Cross-Reactivity:	Human, Mouse
Predicted Reactivity:	Rat
Purification:	Purified by Protein A.

Target Details

Target:	MC1 Receptor (MC1R)
---------	---------------------

Target Details

Alternative Name:	MC-1R/MC1 Receptor (MC1R Products)
Background:	Synonyms: Mshra, Melanocyte-stimulating hormone receptor, MSH-R, Melanocortin receptor 1, MC1-R, Mc1r Background: Receptor for MSH (alpha, beta and gamma) and ACTH. The activity of this receptor is mediated by G proteins which activate adenylate cyclase.
Gene ID:	17199
UniProt:	Q01727
Pathways:	cAMP Metabolic Process , Feeding Behaviour

Application Details

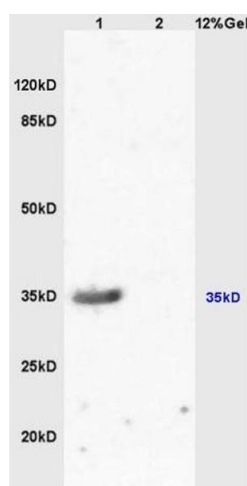
Application Notes:	WB 1:300-5000 ELISA 1:500-1000 FCM 1:20-100 IHC-P 1:200-400 IHC-F 1:100-500 IF(IHC-P) 1:50-200 IF(IHC-F) 1:50-200 IF(ICC) 1:50-200
Restrictions:	For Research Use only

Handling

Format:	Liquid
Concentration:	1 µg/µL
Buffer:	0.01M TBS(pH 7.4) with 1 % BSA, 0.02 % Proclin300 and 50 % Glycerol.
Preservative:	ProClin
Precaution of Use:	This product contains ProClin: a POISONOUS AND HAZARDOUS SUBSTANCE, which should be handled by trained staff only.
Storage:	4 °C, -20 °C
Storage Comment:	Shipped at 4°C. Store at -20°C for one year. Avoid repeated freeze/thaw cycles.
Expiry Date:	12 months

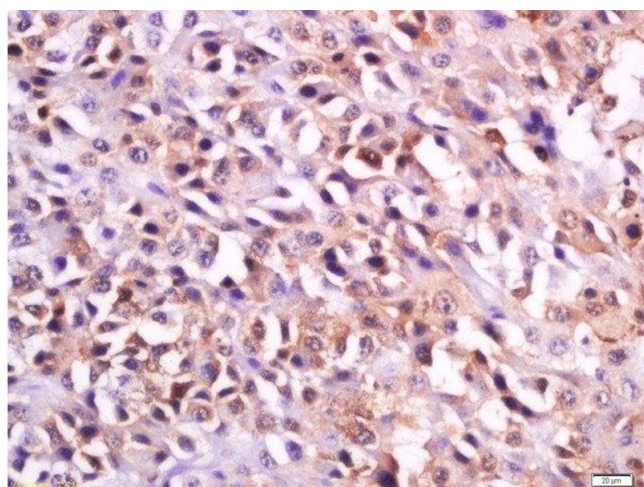
Product cited in: Schmitz, Botte, Sotto, Borba, Bonfa, de Mello: "Increased corticotropin-releasing hormone (CRH) expression in cutaneous lupus lesions." in: **Lupus**, Vol. 24, Issue 8, pp. 854-61, (2015) ([PubMed](#)).

Images



SDS-PAGE

Image 1. Lane 1: mouse kidney lysates Lane 2: mouse brain lysates probed with Anti-MC-1R/MC1 Receptor Polyclonal Antibody, Unconjugated (ABIN686287) at 1:200 in 4 °C. Followed by conjugation to secondary antibody at 1:3000 90min in 37 °C. Predicted band 35kD. Observed band size: 35kD.



Immunohistochemistry (Paraffin-embedded Sections)

Image 2. paraformaldehyde-fixed, paraffin embedded human melanoma tissue, Antigen retrieval by boiling in sodium citrate buffer(pH6) for 15min, Block endogenous peroxidase by 3% hydrogen peroxide for 30 minutes, Blocking buffer (normal goat serum) at 37°C for 20min, Antibody incubation with Rabbit Anti-MC-1R Polyclonal Antibody, Unconjugated at 1:200 overnight at 4°C, followed by a conjugated secondary and DAB staining