



Datasheet for ABIN686407

## anti-Claudin 1 antibody (AA 121-211)



[Go to Product page](#)

3 Images

1 Publication

### Overview

Quantity:	100 µL
Target:	Claudin 1 (CLDN1)
Binding Specificity:	AA 121-211
Reactivity:	Human, Rat, Mouse
Host:	Rabbit
Clonality:	Polyclonal
Conjugate:	This Claudin 1 antibody is un-conjugated
Application:	Western Blotting (WB), ELISA, Immunohistochemistry (Paraffin-embedded Sections) (IHC (p)), Immunofluorescence (Paraffin-embedded Sections) (IF (p)), Flow Cytometry (FACS), Immunofluorescence (Cultured Cells) (IF (cc)), Immunohistochemistry (Frozen Sections) (IHC (fro))

### Product Details

Immunogen:	KLH conjugated synthetic peptide derived from mouse Claudin 1
Isotype:	IgG
Cross-Reactivity:	Human, Mouse, Rat
Purification:	Purified by Protein A.

### Target Details

Target:	Claudin 1 (CLDN1)
Alternative Name:	Claudin 1 ( <a href="#">CLDN1 Products</a> )

## Target Details

---

Background:	Synonyms: AI596271, Claudin-1, Cldn1  Background: Claudins function as major constituents of the tight junction complexes that regulate the permeability of epithelia. While some claudin family members play essential roles in the formation of impermeable barriers, others mediate the permeability to ions and small molecules. Often, several claudin family members are coexpressed and interact with each other, and this determines the overall permeability. CLDN1 is required to prevent the paracellular diffusion of small molecules through tight junctions in the epidermis and is required for the normal barrier function of the skin. Required for normal water homeostasis and to prevent excessive water loss through the skin, probably via an indirect effect on the expression levels of other proteins, since CLDN1 itself seems to be dispensable for water barrier formation in keratinocyte tight junctions.
Gene ID:	12737
UniProt:	<a href="#">O88551</a>
Pathways:	<a href="#">Cell-Cell Junction Organization</a> , <a href="#">Hepatitis C</a>

## Application Details

---

Application Notes:	WB 1:300-5000 ELISA 1:500-1000 FCM 1:20-100 IHC-P 1:200-400 IHC-F 1:100-500 IF(IHC-P) 1:50-200 IF(IHC-F) 1:50-200 IF(ICC) 1:50-200
Restrictions:	For Research Use only

## Handling

---

Format:	Liquid
Concentration:	1 µg/µL
Buffer:	0.01M TBS( pH 7.4) with 1 % BSA, 0.02 % Proclin300 and 50 % Glycerol.
Preservative:	ProClin
Precaution of Use:	This product contains ProClin: a POISONOUS AND HAZARDOUS SUBSTANCE, which should be

## Handling

handled by trained staff only.

Storage: 4 °C,-20 °C

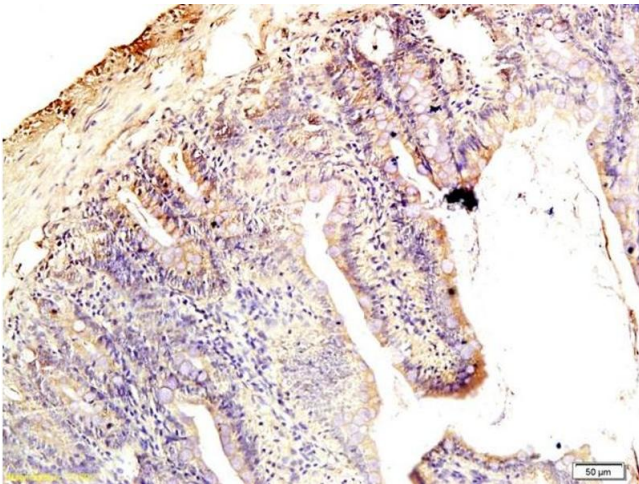
Storage Comment: Shipped at 4°C. Store at -20°C for one year. Avoid repeated freeze/thaw cycles.

Expiry Date: 12 months

## Publications

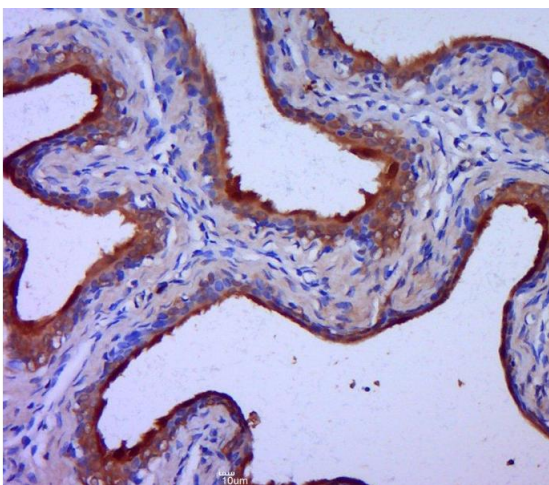
Product cited in: Wang, Chen, Liang, Yan, Lin, Liu, Luo, Huang, Li, Liu, Tang: "Notch inhibition promotes fetal liver stem/progenitor cells differentiation into hepatocytes via the inhibition of HNF-1?." in: **Cell and tissue research**, Vol. 357, Issue 1, pp. 173-84, (2014) ([PubMed](#)).

## Images



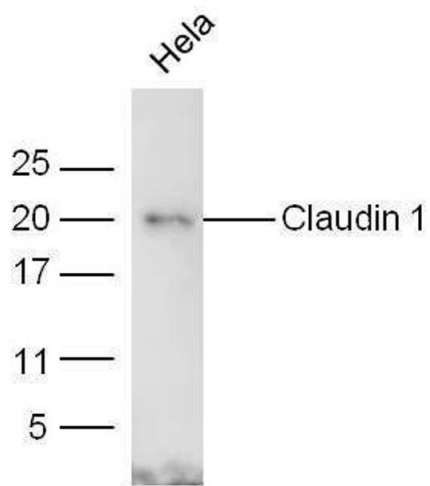
### Immunohistochemistry

**Image 1.** Formalin-fixed and paraffin embedded rat intestine tissue labeled with Anti-Claudin 1 Polyclonal Antibody, Unconjugated (ABIN686407) followed by conjugation to the secondary antibody and DAB staining



### Immunohistochemistry (Paraffin-embedded Sections)

**Image 2.** Paraformaldehyde-fixed, paraffin embedded rat bladder, Antigen retrieval by boiling in sodium citrate buffer (pH6.0) for 15min, Block endogenous peroxidase by 3% hydrogen peroxide for 20 minutes, Blocking buffer (normal goat serum) at 37°C for 30min, Antibody incubation with Claudin 1 Polyclonal Antibody, Unconjugated at 1:400 overnight at 4°C, followed by a conjugated secondary for 20 minutes and DAB staining.



### Western Blotting

**Image 3.** HeLa lysates probed with Rabbit Anti-Claudin 1 Polyclonal Antibody at 1:5000 for 90 min at 37°C.