

Datasheet for ABIN686752
anti-Caveolin-1 antibody (AA 2-120)

4 Images

1 Publication

[Go to Product page](#)

Overview

Quantity:	100 µL
Target:	Caveolin-1 (CAV1)
Binding Specificity:	AA 2-120
Reactivity:	Human, Rat, Mouse
Host:	Rabbit
Clonality:	Polyclonal
Conjugate:	This Caveolin-1 antibody is un-conjugated
Application:	Western Blotting (WB), ELISA, Immunohistochemistry (Paraffin-embedded Sections) (IHC (p)), Immunofluorescence (Cultured Cells) (IF (cc)), Immunofluorescence (Paraffin-embedded Sections) (IF (p)), Immunohistochemistry (Frozen Sections) (IHC (fro)), Flow Cytometry (FACS)

Product Details

Immunogen:	KLH conjugated synthetic peptide derived from human Caveolin-1
Isotype:	IgG
Cross-Reactivity:	Human, Mouse, Rat
Predicted Reactivity:	Dog,Cow,Sheep,Pig,Horse,Rabbit
Purification:	Purified by Protein A.

Target Details

Target:	Caveolin-1 (CAV1)
---------	-------------------

Target Details

Alternative Name:	Caveolin-1 (CAV1 Products)
Background:	<p>Synonyms: CGL3, PPH3, BSCL3, LCCNS, VIP21, MSTP085, Caveolin-1, CAV1, CAV</p> <p>Background: May act as a scaffolding protein within caveolar membranes. Interacts directly with G-protein alpha subunits and can functionally regulate their activity (By similarity). Involved in the costimulatory signal essential for T-cell receptor (TCR)-mediated T-cell activation. Its binding to DPP4 induces T-cell proliferation and NF-kappa-B activation in a T-cell receptor/CD3-dependent manner. Recruits CTNNB1 to caveolar membranes and may regulate CTNNB1-mediated signaling through the Wnt pathway.</p>
Gene ID:	857
UniProt:	Q03135
Pathways:	Maintenance of Protein Location , Signaling Events mediated by VEGFR1 and VEGFR2 , Negative Regulation of Transporter Activity , VEGFR1 Specific Signals

Application Details

Application Notes:	WB 1:300-5000 ELISA 1:500-1000 FCM 1:20-100 IHC-P 1:200-400 IHC-F 1:100-500 IF(IHC-P) 1:50-200 IF(IHC-F) 1:50-200 IF(ICC) 1:50-200
Restrictions:	For Research Use only

Handling

Format:	Liquid
Concentration:	1 µg/µL
Buffer:	0.01M TBS(pH 7.4) with 1 % BSA, 0.02 % Proclin300 and 50 % Glycerol.
Preservative:	ProClin
Precaution of Use:	This product contains ProClin: a POISONOUS AND HAZARDOUS SUBSTANCE, which should be handled by trained staff only.

Handling

Storage: 4 °C, -20 °C

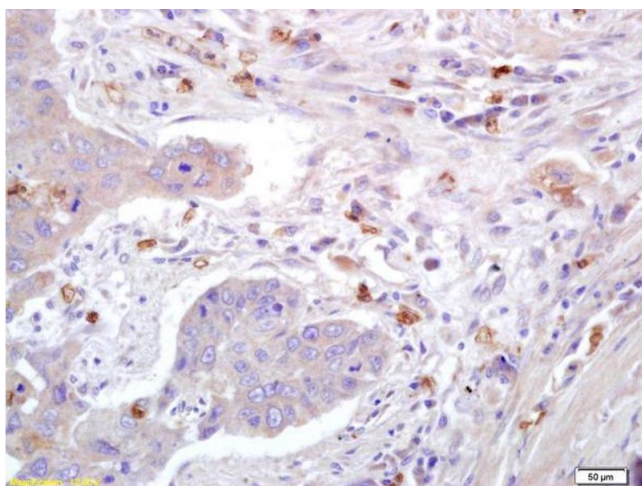
Storage Comment: Shipped at 4°C. Store at -20°C for one year. Avoid repeated freeze/thaw cycles.

Expiry Date: 12 months

Publications

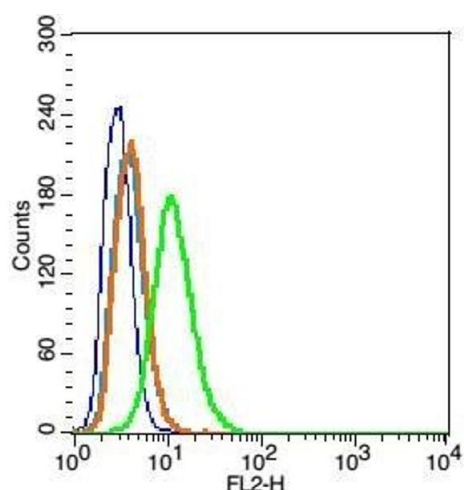
Product cited in: Cheng, Song, Li, Zhao, An, Sun, Luo: "The role of rosiglitazone in the proliferation of vascular smooth muscle cells after experimental subarachnoid hemorrhage." in: **Acta neurochirurgica**, Vol. 156, Issue 11, pp. 2103-9, (2014) ([PubMed](#)).

Images



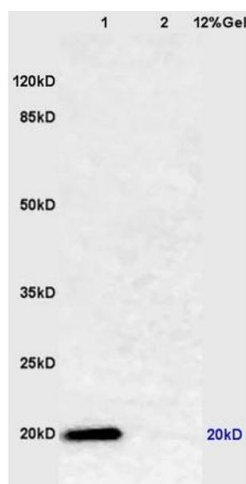
Immunohistochemistry

Image 1. Formalin-fixed and paraffin embedded human lung carcinoma labeled with Anti-Caveolin-1 Polyclonal Antibody, Unconjugated (ABIN686752) at 1:200 followed by conjugation to the secondary antibody and DAB staining.



Flow Cytometry

Image 2. RSC96 cells probed with Caveolin-1 Polyclonal Antibody, Unconjugated at 1:100 for 30 minutes followed by incubation with a conjugated secondary (PE Conjugated) (green) for 30 minutes compared to control cells (blue), secondary only (light blue) and isotype control (orange).



SDS-PAGE

Image 3. Lane 1: mouse lung lysates Lane 2: mouse muscle lysates probed with Anti Caveolin-1 Polyclonal Antibody, Unconjugated (ABIN686752) at 1:200 in 4 °C. Followed by conjugation to secondary antibody at 1:3000 90min in 37 °C. Predicted band 20kD. Observed band size: 20kD.

Please check the [product details page](#) for more images. Overall 4 images are available for ABIN686752.