



Datasheet for ABIN686842

anti-CD130/gp130 antibody (AA 651-750)



[Go to Product page](#)

3 Images

2 Publications

Overview

Quantity:	100 µL
Target:	CD130/gp130 (IL6ST)
Binding Specificity:	AA 651-750
Reactivity:	Human, Mouse, Rat
Host:	Rabbit
Clonality:	Polyclonal
Conjugate:	This CD130/gp130 antibody is un-conjugated
Application:	Western Blotting (WB), ELISA, Flow Cytometry (FACS), Immunofluorescence (Paraffin-embedded Sections) (IF (p)), Immunofluorescence (Cultured Cells) (IF (cc)), Immunohistochemistry (Paraffin-embedded Sections) (IHC (p)), Immunohistochemistry (Frozen Sections) (IHC (fro))

Product Details

Immunogen:	KLH conjugated synthetic peptide derived from mouse IL6R beta
Isotype:	IgG
Cross-Reactivity:	Human, Mouse, Rat
Purification:	Purified by Protein A.

Target Details

Target:	CD130/gp130 (IL6ST)
Alternative Name:	IL-6R Beta/CD130/gp130 (IL6ST Products)

Target Details

Background:	Synonyms: Interleukin-6 receptor subunit beta, IL-6 receptor subunit beta, IL-6R subunit beta, IL-6R-beta, IL-6RB, Interleukin-6 signal transducer, Membrane glycoprotein 130, gp130, Oncostatin-M receptor subunit alpha, CD130, Il6st Background: Signal-transducing molecule. The receptor systems for IL6, LIF, OSM, CNTF, IL11, CTF1 and BSF3 can utilize gp130 for initiating signal transmission. Binds to IL6/IL6R (alpha chain) complex, resulting in the formation of high-affinity IL6 binding sites, and transduces the signal. Does not bind IL6. May have a role in embryonic development.
Gene ID:	16195
UniProt:	Q00560
Pathways:	JAK-STAT Signaling , Cellular Glucan Metabolic Process , Autophagy , Smooth Muscle Cell Migration , Cancer Immune Checkpoints

Application Details

Application Notes:	WB 1:300-5000 ELISA 1:500-1000 FCM 1:20-100 IHC-P 1:200-400 IHC-F 1:100-500 IF(IHC-P) 1:50-200 IF(IHC-F) 1:50-200 IF(ICC) 1:50-200
Restrictions:	For Research Use only

Handling

Format:	Liquid
Concentration:	1 µg/µL
Buffer:	0.01M TBS(pH 7.4) with 1 % BSA, 0.02 % Proclin300 and 50 % Glycerol.
Preservative:	ProClin
Precaution of Use:	This product contains ProClin: a POISONOUS AND HAZARDOUS SUBSTANCE, which should be handled by trained staff only.
Storage:	4 °C,-20 °C

Handling

Storage Comment: Shipped at 4°C. Store at -20°C for one year. Avoid repeated freeze/thaw cycles.

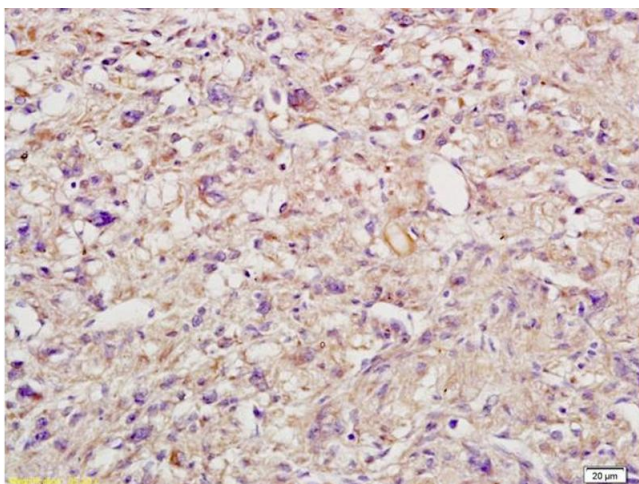
Expiry Date: 12 months

Publications

Product cited in: Zhou, Zhang, Pan, Chen, Qi: "Interleukin-6 induces an epithelial-mesenchymal transition phenotype in human adamantinomatous craniopharyngioma cells and promotes tumor cell migration." in: **Molecular medicine reports**, Vol. 15, Issue 6, pp. 4123-4131, (2018) ([PubMed](#)).

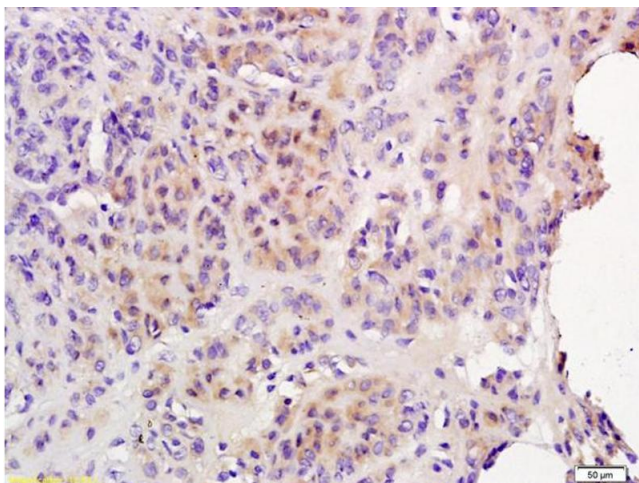
Prystaz, Kaiser, Kovtun, Haffner-Luntzer, Fischer, Rapp, Liedert, Strauss, Waetzig, Rose-John, Ignatius: "Distinct Effects of IL-6 Classic and Trans-Signaling in Bone Fracture Healing." in: **The American journal of pathology**, Vol. 188, Issue 2, pp. 474-490, (2017) ([PubMed](#)).

Images



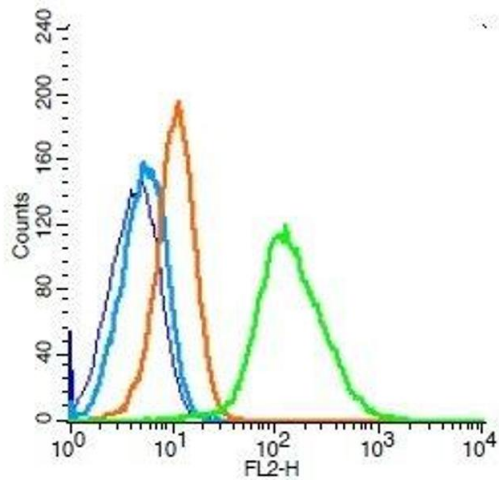
Immunohistochemistry

Image 1. Formalin-fixed and paraffin embedded human endometrial cancer labeled with Anti-IL-6R Beta/CD130/gp130 Polyclonal Antibody, Unconjugated (ABIN686842) followed by conjugation to the secondary antibody and DAB staining



Immunohistochemistry

Image 2. Formalin-fixed and paraffin embedded human endometrial cancer labeled with Anti-IL-6R Beta/CD130/gp130 Polyclonal Antibody, Unconjugated (ABIN686842) followed by conjugation to the secondary antibody and DAB staining



Flow Cytometry

Image 3. Human Raji cells probed with IL-6R beta Polyclonal Antibody, Unconjugated (green) at 1:100 for 30 minutes followed by a PE conjugated secondary antibody compared to unstained cells (blue), secondary only (light blue), and isotype control (orange).