

Datasheet for ABIN687037
anti-IFI16 antibody (AA 201-350)[Go to Product page](#)

1 Image

Overview

Quantity:	100 µL
Target:	IFI16
Binding Specificity:	AA 201-350
Reactivity:	Human
Host:	Rabbit
Clonality:	Polyclonal
Conjugate:	This IFI16 antibody is un-conjugated
Application:	Western Blotting (WB), ELISA, Immunofluorescence (Cultured Cells) (IF (cc)), Immunofluorescence (Paraffin-embedded Sections) (IF (p)), Immunohistochemistry (Paraffin- embedded Sections) (IHC (p)), Immunohistochemistry (Frozen Sections) (IHC (fro))

Product Details

Immunogen:	KLH conjugated synthetic peptide derived from human IFI16
Isotype:	IgG
Cross-Reactivity:	Human
Purification:	Purified by Protein A.

Target Details

Target:	IFI16
Alternative Name:	I16/MNDA (IFI16 Products)

Target Details

Background:	<p>Synonyms: Gamma-interferon-inducible protein i16, Interferon-inducible myeloid differentiation transcriptional activator, A730048F03, D3, D3cDNA, i-d3, I16, I16B, I204, I205, i205a, i205b, NGIP1, MGC9466, Mnda, p204, PYHIN2.</p> <p>Background: Interferon (IFN) Inducible 16 (IFI16) protein belongs to a family of HIN 200 human and mouse proteins. IFI16 is a nuclear protein containing regulatory domains such as DNA binding domain, transcriptional regulatory domain and DAPIN/PAAD domain. IFI16 has three isoforms A, B, and C (85-95 kDa), which arise as a result of mRNA alternative splicing. All are phosphorylated on serine and threonine residues and can homo and heterodimerize.</p> <p>Expression is restricted to the nuclei of hematopoietic cells, fibroblasts and epithelial cells. IFI16 expression in hematopoietic cells of myeloid lineage is tightly regulated and highly induced in the differentiation and proliferation of the cell. Due to its localization in the nucleus, regulation of protein expression, and ability to bind DNA, it is assumed that IFI16 has a role in transcription regulation of cell differentiation. In addition, it was found that IFI16 can act as a transcriptional repressor and is involved in regulation and activation of p53 in cancer cells.</p>
Gene ID:	3428
Pathways:	Activation of Innate immune Response , Positive Regulation of Endopeptidase Activity , Autophagy , Inflammasome

Application Details

Application Notes:	WB 1:300-5000 ELISA 1:500-1000 IHC-P 1:200-400 IHC-F 1:100-500 IF(IHC-P) 1:50-200 IF(IHC-F) 1:50-200 IF(ICC) 1:50-200
Restrictions:	For Research Use only

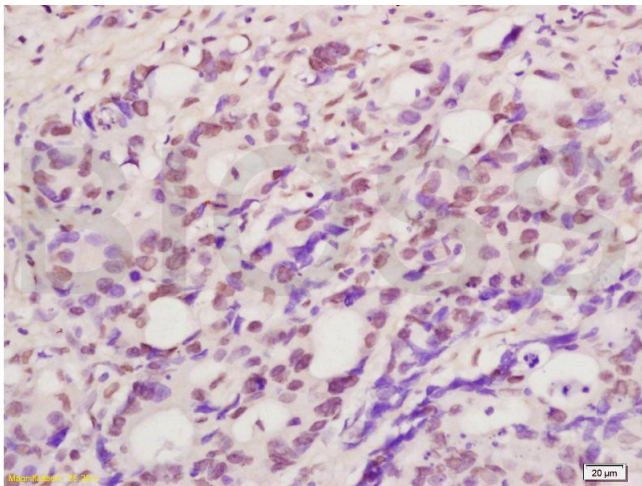
Handling

Format:	Liquid
Concentration:	1 µg/µL
Buffer:	0.01M TBS(pH 7.4) with 1 % BSA, 0.02 % Proclin300 and 50 % Glycerol.
Preservative:	ProClin

Handling

Precaution of Use:	This product contains ProClin: a POISONOUS AND HAZARDOUS SUBSTANCE, which should be handled by trained staff only.
Storage:	4 °C,-20 °C
Storage Comment:	Shipped at 4°C. Store at -20°C for one year. Avoid repeated freeze/thaw cycles.
Expiry Date:	12 months

Images



Immunohistochemistry (Paraffin-embedded Sections)

Image 1. Paraformaldehyde-fixed, paraffin embedded Human colon cancer Antigen retrieval by boiling in sodium citrate buffer (pH6.0) for 15min Block endogenous peroxidase by 3% hydrogen peroxide for 20 minutes Blocking buffer (normal goat serum) at 37°C for 30min Antibody incubation with IFI16/MNDA Polyclonal Antibody, Unconjugated at 1:200 overnight at 4°C, DAB staining.