



[Go to Product page](#)

Datasheet for ABIN687082

anti-GREM1 antibody (AA 101-184)

5 Images

1 Publication

Overview

Quantity:	100 µL
Target:	GREM1
Binding Specificity:	AA 101-184
Reactivity:	Human, Mouse, Rat
Host:	Rabbit
Clonality:	Polyclonal
Conjugate:	This GREM1 antibody is un-conjugated
Application:	Western Blotting (WB), ELISA, Immunofluorescence (Cultured Cells) (IF (cc)), Immunofluorescence (Paraffin-embedded Sections) (IF (p)), Immunohistochemistry (Paraffin-embedded Sections) (IHC (p)), Immunohistochemistry (Frozen Sections) (IHC (fro))

Product Details

Immunogen:	KLH conjugated synthetic peptide derived from human gremlin 1
Isotype:	IgG
Cross-Reactivity:	Human, Mouse, Rat
Predicted Reactivity:	Dog,Cow,Horse,Chicken,Rabbit
Purification:	Purified by Protein A.

Target Details

Target:	GREM1
---------	-------

Target Details

Alternative Name:	Gremlin 1 (GREM1 Products)
Background:	<p>Synonyms: DRM, HMPS, PIG2, CRAC1, DAND2, IHG-2, GREMLIN, CKTSF1B1, Gremlin-1, Cell proliferation-inducing gene 2 protein, Cysteine knot superfamily 1, BMP antagonist 1, DAN domain family member 2, Down-regulated in Mos-transformed cells protein, Increased in high glucose protein 2, GREM1</p> <p>Background: Cytokine that may play an important role during carcinogenesis and metanephric kidney organogenesis, as a BMP antagonist required for early limb outgrowth and patterning in maintaining the FGF4-SHH feedback loop. Down-regulates the BMP4 signaling in a dose-dependent manner. Acts as inhibitor of monocyte chemotaxis (By similarity).</p>
Gene ID:	26585
UniProt:	O60565
Pathways:	Regulation of Muscle Cell Differentiation , Tube Formation , Maintenance of Protein Location

Application Details

Application Notes:	WB 1:300-5000 ELISA 1:500-1000 IHC-P 1:200-400 IHC-F 1:100-500 IF(IHC-P) 1:50-200 IF(IHC-F) 1:50-200 IF(ICC) 1:50-200
Restrictions:	For Research Use only

Handling

Format:	Liquid
Concentration:	1 µg/µL
Buffer:	0.01M TBS(pH 7.4) with 1 % BSA, 0.02 % Proclin300 and 50 % Glycerol.
Preservative:	ProClin
Precaution of Use:	This product contains ProClin: a POISONOUS AND HAZARDOUS SUBSTANCE, which should be handled by trained staff only.
Storage:	4 °C,-20 °C

Handling

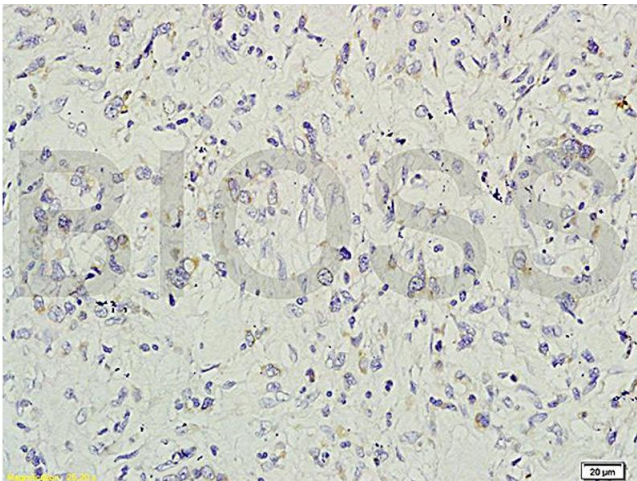
Storage Comment: Shipped at 4°C. Store at -20°C for one year. Avoid repeated freeze/thaw cycles.

Expiry Date: 12 months

Publications

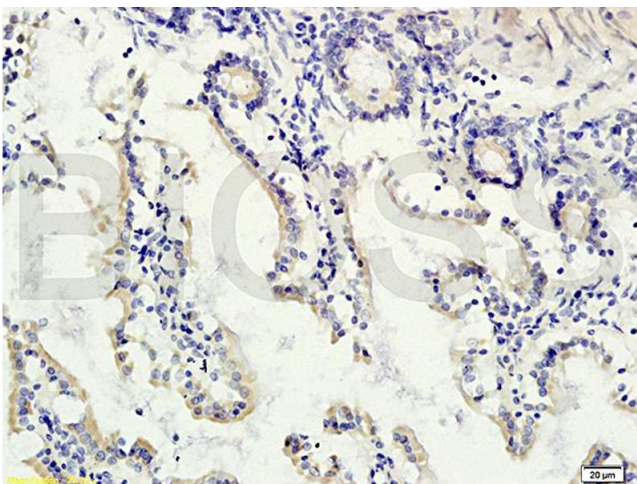
Product cited in: Wellbrock, Sheikhzadeh, Oliveira-Ferrer, Stamm, Hillebrand, Keyser, Klokow, Vohwinkel, Bonk, Otto, Streichert, Balabanov, Hagel, Rybczynski, Bentzien, Bokemeyer, von Kodolitsch, Fiedler: "Overexpression of Gremlin-1 in patients with Loeys-Dietz syndrome: implications on pathophysiology and early disease detection." in: **PLoS ONE**, Vol. 9, Issue 8, pp. e104742, (2014) ([PubMed](#)).

Images



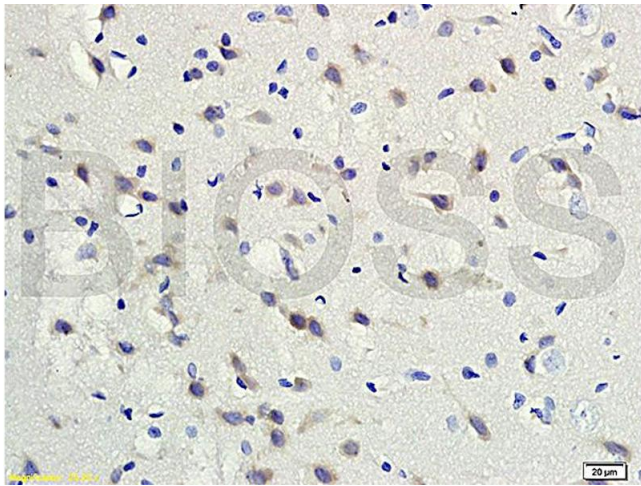
Immunohistochemistry

Image 1. Formalin-fixed and paraffin embedded rat small intestine tissue labeled with Rabbit Anti-gremlin Polyclonal Antibody (ABIN687082) at 1:200 followed by conjugation to the secondary antibody and DAB staining.



Immunohistochemistry

Image 2. Formalin-fixed and paraffin embedded human colon carcinoma labeled with Rabbit Anti-gremlin Polyclonal Antibody (ABIN687082) at 1:200 followed by conjugation to the secondary antibody and DAB staining.



Immunohistochemistry

Image 3. Formalin-fixed and paraffin embedded rat brain tissue labeled with Rabbit Anti-gremlin Polyclonal Antibody (ABIN687082) at 1:200 followed by conjugation to the secondary antibody and DAB staining.

Please check the [product details page](#) for more images. Overall 5 images are available for ABIN687082.