

Datasheet for ABIN687262
anti-SCGB1A1 antibody (AA 21-86)

3 Images

1 Publication

[Go to Product page](#)

Overview

Quantity:	100 µL
Target:	SCGB1A1
Binding Specificity:	AA 21-86
Reactivity:	Rat
Host:	Rabbit
Clonality:	Polyclonal
Conjugate:	This SCGB1A1 antibody is un-conjugated
Application:	Western Blotting (WB), ELISA, Immunofluorescence (Cultured Cells) (IF (cc)), Immunofluorescence (Paraffin-embedded Sections) (IF (p)), Immunohistochemistry (Paraffin- embedded Sections) (IHC (p)), Immunohistochemistry (Frozen Sections) (IHC (fro))

Product Details

Immunogen:	KLH conjugated synthetic peptide derived from mouse Uteroglobin
Isotype:	IgG
Cross-Reactivity:	Rat
Predicted Reactivity:	Mouse
Purification:	Purified by Protein A.

Target Details

Target:	SCGB1A1
---------	---------

Target Details

Alternative Name:	Uteroglobin (SCGB1A1 Products)
Background:	<p>Synonyms: Scgb1a1, secretoglobin family 1A member 1, UG, UGB, Utg, CC10, CC16, CCSP, PCB-BP, Clara cell 17 kDa protein, Clara cell phospholipid-binding prote, CCPBP, Clara cells 10 kDa secretory protein, PCB-binding protein, Urinary Protein 1, Urine Protein 1</p> <p>Background: This gene encodes a member of the secretoglobin family of small secreted proteins. The encoded protein has been implicated in numerous functions including anti-inflammation, inhibition of phospholipase A2 and the sequestering of hydrophobic ligands. Defects in this gene are associated with a susceptibility to asthma. Binds phosphatidylcholine, phosphatidylinositol, polychlorinated biphenyls (PCB) and weakly progesterone.</p>

Gene ID: 22287

UniProt: [Q06318](#)

Application Details

Application Notes:	WB 1:300-5000 ELISA 1:500-1000 IHC-P 1:200-400 IHC-F 1:100-500 IF(IHC-P) 1:50-200 IF(IHC-F) 1:50-200 IF(ICC) 1:50-200
Restrictions:	For Research Use only

Handling

Format:	Liquid
Concentration:	1 µg/µL
Buffer:	0.01M TBS(pH 7.4) with 1 % BSA, 0.02 % Proclin300 and 50 % Glycerol.
Preservative:	ProClin
Precaution of Use:	This product contains ProClin: a POISONOUS AND HAZARDOUS SUBSTANCE, which should be handled by trained staff only.
Storage:	4 °C,-20 °C
Storage Comment:	Shipped at 4°C. Store at -20°C for one year. Avoid repeated freeze/thaw cycles.

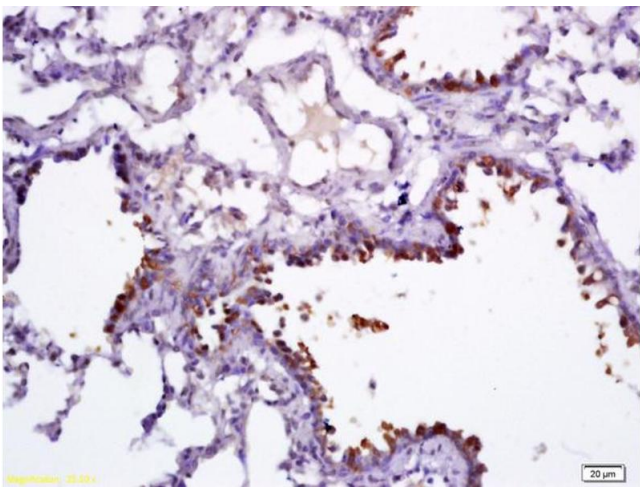
Handling

Expiry Date: 12 months

Publications

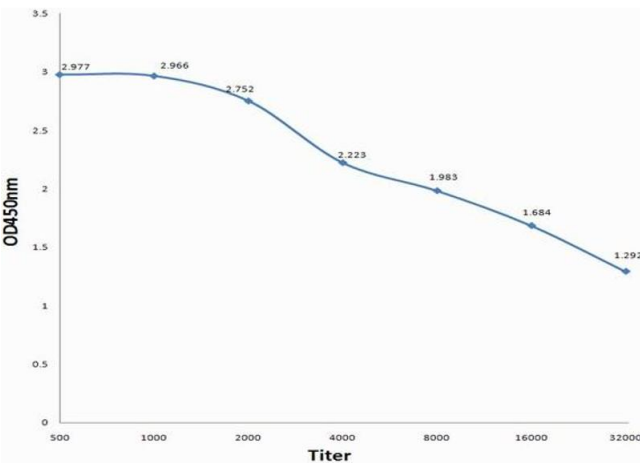
Product cited in: Mori, Sasaki, Makabe, Yoshinari, Yajima: "The genes Scgb1a1, Lpo and Gbp2 characteristically expressed in peri-implant epithelium of rats." in: **Clinical oral implants research**, (2015) ([PubMed](#)).

Images



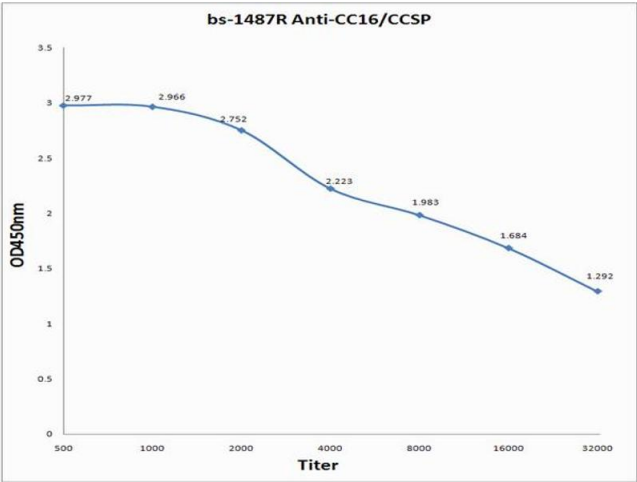
Immunohistochemistry

Image 1. Formalin-fixed and paraffin embedded rat lung labeled with Anti-CC16/CCSP Polyclonal Antibody, Unconjugated (ABIN687262) followed by conjugation to the secondary antibody and DAB staining



ELISA

Image 2. Antigen: 0.2ug/100ul, Primary: Antiserum, 1:500, 1:1000, 1:2000, 1:4000, 1:8000, 1:16000, 1:32000, Secondary: HRP conjugated Goat-Anti-Rabbit IgG at 1: 5000, TMB staining, Read the data in MicroplateReader by 450nm



ELISA

Image 3. Antigen: 0.2 µg/100 µL Primary: Antiserum, 1:500, 1:1000, 1:2000, 1:4000, 1:8000, 1:16000, 1:32000; Secondary: HRP conjugated Goat-Anti-Rabbit IgG at 1: 5000; TMB staining; Read the data in MicroplateReader by 450