

Datasheet for ABIN687412
anti-Cathepsin B antibody (AA 251-339)[Go to Product page](#)

4 Images

1 Publication

Overview

Quantity:	100 µL
Target:	Cathepsin B (CTSB)
Binding Specificity:	AA 251-339
Reactivity:	Human, Mouse, Rat
Host:	Rabbit
Clonality:	Polyclonal
Conjugate:	This Cathepsin B antibody is un-conjugated
Application:	Western Blotting (WB), ELISA, Flow Cytometry (FACS), Immunocytochemistry (ICC), Immunohistochemistry (Paraffin-embedded Sections) (IHC (p)), Immunofluorescence (Cultured Cells) (IF (cc)), Immunofluorescence (Paraffin-embedded Sections) (IF (p)), Immunohistochemistry (Frozen Sections) (IHC (fro))

Product Details

Immunogen:	KLH conjugated synthetic peptide derived from mouse Capsin B heavy chain
Isotype:	IgG
Cross-Reactivity:	Human, Mouse, Rat
Purification:	Purified by Protein A.

Target Details

Target:	Cathepsin B (CTSB)
Alternative Name:	Cathepsin B Heavy Chain (CTSB Products)

Target Details

Background:	Synonyms: CB, Cathepsin B, Cathepsin B1, Ctsb Background: Thiol protease which is believed to participate in intracellular degradation and turnover of proteins. Has also been implicated in tumor invasion and metastasis.
Gene ID:	13030
UniProt:	P10605
Pathways:	Activation of Innate immune Response , Toll-Like Receptors Cascades

Application Details

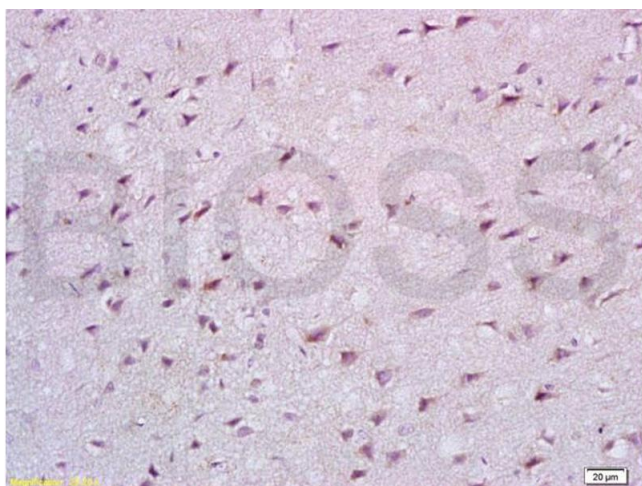
Application Notes:	WB 1:300-5000 ELISA 1:500-1000 FCM 1:20-100 IHC-P 1:200-400 IHC-F 1:100-500 IF(IHC-P) 1:50-200 IF(IHC-F) 1:50-200 IF(ICC) 1:50-200 ICC 1:100-500
Restrictions:	For Research Use only

Handling

Format:	Liquid
Concentration:	1 µg/µL
Buffer:	0.01M TBS(pH 7.4) with 1 % BSA, 0.02 % Proclin300 and 50 % Glycerol.
Preservative:	ProClin
Precaution of Use:	This product contains ProClin: a POISONOUS AND HAZARDOUS SUBSTANCE, which should be handled by trained staff only.
Storage:	4 °C,-20 °C
Storage Comment:	Shipped at 4°C. Store at -20°C for one year. Avoid repeated freeze/thaw cycles.
Expiry Date:	12 months

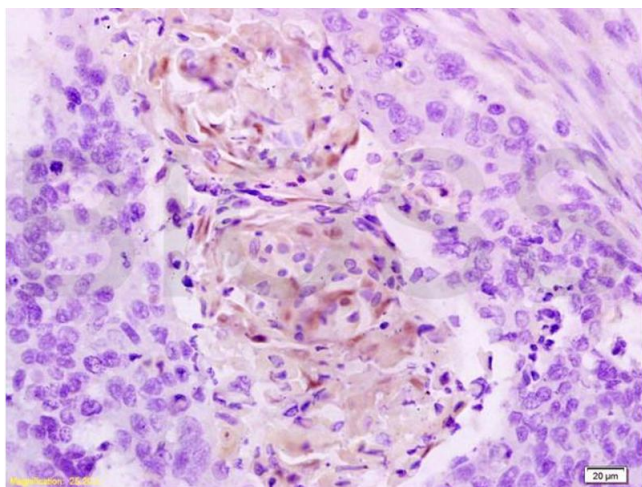
Product cited in: Liu, Tang, Zhang, Li, Yuan, Wang: "Autophagy activation aggravates neuronal injury in the hippocampus of vascular dementia rats." in: **Neural regeneration research**, Vol. 9, Issue 13, pp. 1288-96, (2014) ([PubMed](#)).

Images



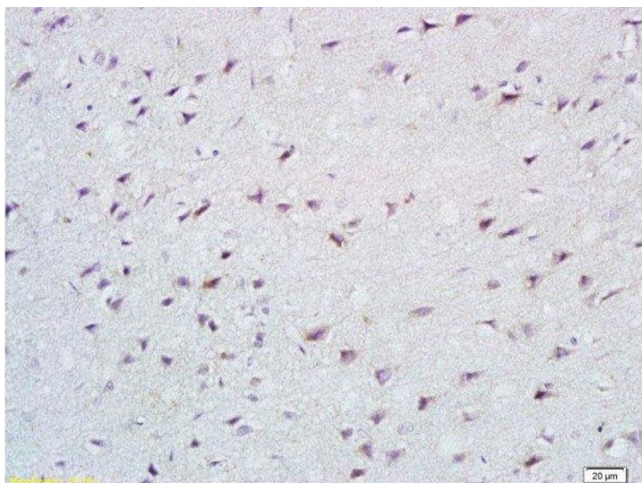
Immunohistochemistry

Image 1. Formalin-fixed and paraffin embedded rat brain tissue labeled with Anti-Cathepsin B Polyclonal Antibody, Unconjugated (ABIN687412) at 1:200 followed by conjugation to the secondary antibody, (SP-0023), and DAB staining



Immunohistochemistry

Image 2. Formalin-fixed and paraffin embedded human esophageal carcinoma tissue labeled with Anti-Cathepsin B Polyclonal Antibody, Unconjugated (ABIN687412) at 1:200 followed by conjugation to the secondary antibody, (SP-0023), and DAB staining



Immunohistochemistry (Paraffin-embedded Sections)

Image 3. Formalin-fixed and paraffin embedded rat brain tissue labeled with Anti-Cathepsin B Polyclonal Antibody, Unconjugated at 1:200 followed by conjugation to the secondary antibody, (SP-0023), and DAB staining

Images

Please check the [product details page](#) for more images. Overall 4 images are available for ABIN687412.