



[Go to Product page](#)

Datasheet for ABIN687442

anti-CXCL10 antibody (AA 35-98)

3 Images

5 Publications

Overview

Quantity:	100 µL
Target:	CXCL10
Binding Specificity:	AA 35-98
Reactivity:	Human, Mouse, Rat
Host:	Rabbit
Clonality:	Polyclonal
Conjugate:	This CXCL10 antibody is un-conjugated
Application:	ELISA, Flow Cytometry (FACS), Immunofluorescence (Paraffin-embedded Sections) (IF (p)), Immunofluorescence (Cultured Cells) (IF (cc)), Immunohistochemistry (Paraffin-embedded Sections) (IHC (p)), Immunohistochemistry (Frozen Sections) (IHC (fro))

Product Details

Immunogen:	KLH conjugated synthetic peptide derived from mouse CXCL10
Isotype:	IgG
Cross-Reactivity:	Human, Mouse, Rat
Purification:	Purified by Protein A.

Target Details

Target:	CXCL10
Alternative Name:	CXCL10 (CXCL10 Products)

Target Details

Background: Synonyms: C7, IP10, CRG-2, INP1, IP-10, Ifi1, mob-1, Scyb1, gIP-1, C-X-C motif chemokine 1, 1 kDa interferon gamma-induced protein, Gamma-IP1, Interferon-gamma induced protein CRG-2, Small-inducible cytokine B1, Cxcl1, Crg2

Background: In addition to its role as a proinflammatory cytokine, may participate in T-cell effector function and perhaps T-cell development.

Gene ID: 15945

UniProt: [P17515](#)

Application Details

Application Notes: ELISA 1:500-1000
FCM 1:20-100
IHC-P 1:200-400
IHC-F 1:100-500
IF(IHC-P) 1:50-200
IF(IHC-F) 1:50-200
IF(ICC) 1:50-200

Restrictions: For Research Use only

Handling

Format: Liquid

Concentration: 1 µg/µL

Buffer: 0.01M TBS(pH 7.4) with 1 % BSA, 0.02 % Proclin300 and 50 % Glycerol.

Preservative: ProClin

Precaution of Use: This product contains ProClin: a POISONOUS AND HAZARDOUS SUBSTANCE, which should be handled by trained staff only.

Storage: 4 °C, -20 °C

Storage Comment: Shipped at 4°C. Store at -20°C for one year. Avoid repeated freeze/thaw cycles.

Expiry Date: 12 months

Publications

Product cited in: Henschel, Cabrera, Kaldunski, Jia, Geoffrey, Roethle, Lam, Chen, Wang, Salzman, Hessner: "

Modulation of the diet and gastrointestinal microbiota normalizes systemic inflammation and β -cell chemokine expression associated with autoimmune diabetes susceptibility." in: **PLoS ONE**, Vol. 13, Issue 1, pp. e0190351, (2018) ([PubMed](#)).

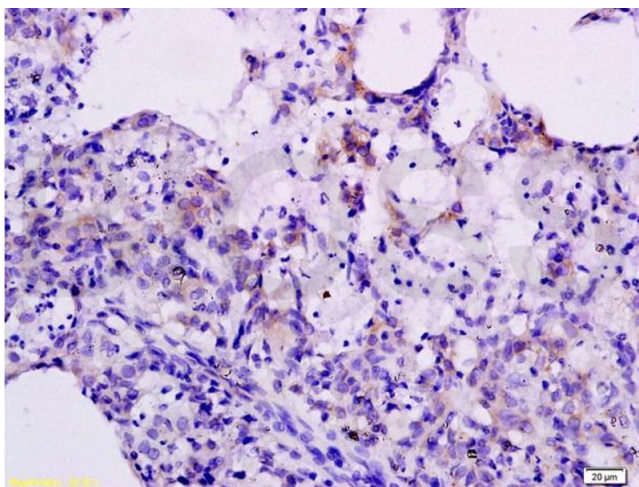
Lee, Cho, Cho, Bae, Kim, Park: "Establishment of a chronic obstructive pulmonary disease mouse model based on the elapsed time after LPS intranasal instillation." in: **Laboratory animal research**, Vol. 34, Issue 1, pp. 1-10, (2018) ([PubMed](#)).

Li, Nishikawa, Kaneda: "Platelet-cytokine Complex Suppresses Tumour Growth by Exploiting Intratumoural Thrombin-dependent Platelet Aggregation." in: **Scientific reports**, Vol. 6, pp. 25077, (2016) ([PubMed](#)).

Iversen, Reinert, Thomsen, Bagdonaite, Nandakumar, Cheshenko, Prabakaran, Vakhrushev, Krzyzowska, Kratholm, Ruiz-Perez, Petersen, Goriely, Bibby, Eriksson, Ruland, Thomsen, Herold, Wandall, Frische et al.: "An innate antiviral pathway acting before interferons at epithelial surfaces. ..." in: **Nature immunology**, Vol. 17, Issue 2, pp. 150-8, (2016) ([PubMed](#)).

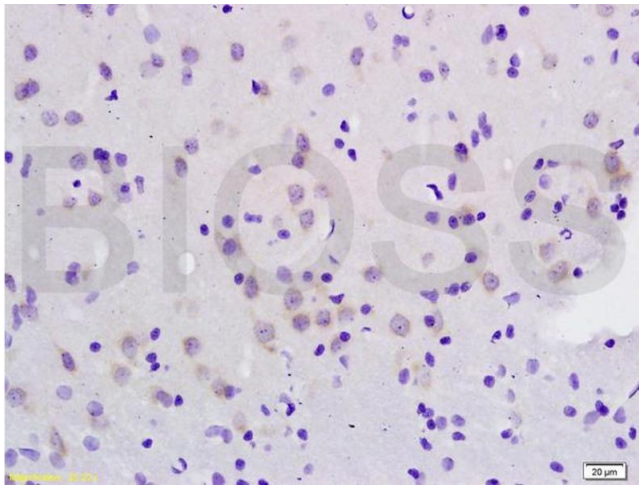
Clancy-Thompson, Perekslis, Croteau, Alexander, Chabanet, Turk, Huang, Mullins: "Melanoma Induces, and Adenosine Suppresses, CXCR3-Cognate Chemokine Production and T-cell Infiltration of Lungs Bearing Metastatic-like Disease." in: **Cancer immunology research**, Vol. 3, Issue 8, pp. 956-67, (2015) ([PubMed](#)).

Images



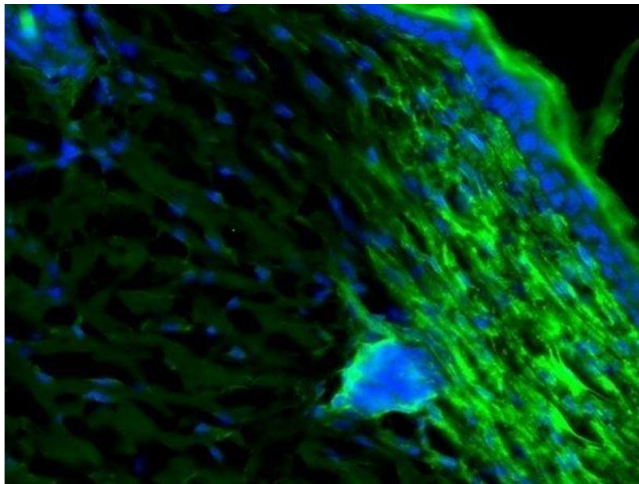
Immunohistochemistry

Image 1. Formalin-fixed and paraffin embedded rat lung labeled with Anti-CXCL10 Polyclonal Antibody, Unconjugated (ABIN687442) at 1:200 followed by conjugation to the secondary antibody and DAB staining.



Immunohistochemistry

Image 2. Formalin-fixed and paraffin embedded rat brain labeled with Anti-CXCL10 Polyclonal Antibody, Unconjugated (ABIN687442) at 1:200 followed by conjugation to the secondary antibody and DAB staining.



Immunofluorescence (Paraffin-embedded Sections)

Image 3. C57BL/6 mice were shaved, treated with nair to remove residual hair and painted with IFN γ . Skin from sacrificed mice was isolated 16hr later. Skin was sequentially incubated at 4C for 1 hr in 4% PFA/PBS; 1hr in 30% sucrose/PBS; 1 hr in 15% sucrose/35% PBS/50% OCT, followed by embedding in OCT and frozen. 10 μ m frozen sections were performed with a cryostat. Slices were fixed in pre-chilled MeOH and incubated at -20C for 10 minutes. They were then washed in PBS at room temperature 3 times for 5 minutes each. The sections were blocked for 60 minutes at RT with PBS containing 5% BSA. The block was removed, anti-CXCL10 antibody for 15 minutes each followed by 2 washes of PBS for 5 minutes each. The secondary antibody, anti-rabbit A488 was diluted 1:500 in PBS containing 1% normal goat serum, added to the sections and incubated for 1 hour at RT. After the incubation, the samples were washed for 10 minutes in PBS and this was repeated 4 times. This image was kindly submitted by an end-user from the Geisel School of Medicine at Dartmouth, Lebanon, NH.