



[Go to Product page](#)

Datasheet for ABIN687502

anti-Aquaporin 1 antibody (AA 181-269)

7 Images

1 Publication

Overview

Quantity:	100 µL
Target:	Aquaporin 1 (AQP1)
Binding Specificity:	AA 181-269
Reactivity:	Human, Rat, Mouse
Host:	Rabbit
Clonality:	Polyclonal
Conjugate:	This Aquaporin 1 antibody is un-conjugated
Application:	Western Blotting (WB), ELISA, Immunohistochemistry (Paraffin-embedded Sections) (IHC (p)), Flow Cytometry (FACS), Immunofluorescence (Cultured Cells) (IF (cc)), Immunofluorescence (Paraffin-embedded Sections) (IF (p)), Immunohistochemistry (Frozen Sections) (IHC (fro))

Product Details

Immunogen:	KLH conjugated synthetic peptide derived from human AQP1
Isotype:	IgG
Cross-Reactivity:	Human, Mouse, Rat
Predicted Reactivity:	Dog,Cow,Sheep,Pig,Horse
Purification:	Purified by Protein A.

Target Details

Target:	Aquaporin 1 (AQP1)
---------	--------------------

Target Details

Alternative Name:	AQP1 (AQP1 Products)
Background:	Synonyms: CO, CHIP28, AQP-CHIP, Aquaporin-1, AQP-1, Aquaporin-CHIP, Urine water channel, Water channel protein for red blood cells and kidney proximal tubule, AQP1 Background: Forms a water-specific channel that provides the plasma membranes of red cells and kidney proximal tubules with high permeability to water, thereby permitting water to move in the direction of an osmotic gradient.
Gene ID:	358
UniProt:	P29972
Pathways:	Hormone Transport

Application Details

Application Notes:	WB 1:300-5000 ELISA 1:500-1000 FCM 1:20-100 IHC-P 1:200-400 IHC-F 1:100-500 IF(IHC-P) 1:50-200 IF(IHC-F) 1:50-200 IF(ICC) 1:50-200
Restrictions:	For Research Use only

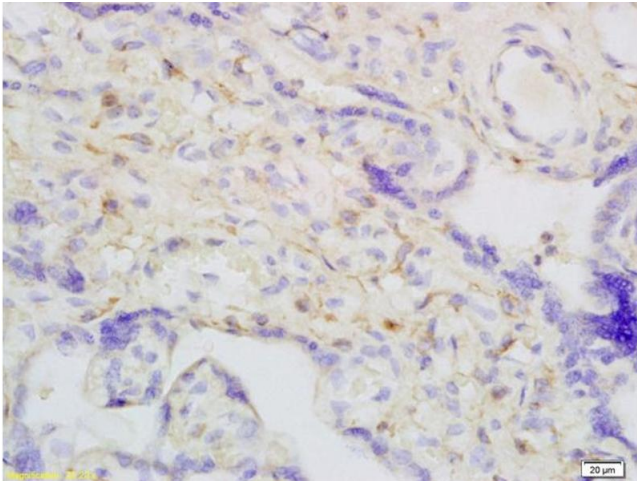
Handling

Format:	Liquid
Concentration:	1 µg/µL
Buffer:	0.01M TBS(pH 7.4) with 1 % BSA, 0.02 % Proclin300 and 50 % Glycerol.
Preservative:	ProClin
Precaution of Use:	This product contains ProClin: a POISONOUS AND HAZARDOUS SUBSTANCE, which should be handled by trained staff only.
Storage:	4 °C,-20 °C
Storage Comment:	Shipped at 4°C. Store at -20°C for one year. Avoid repeated freeze/thaw cycles.
Expiry Date:	12 months

Product cited in:

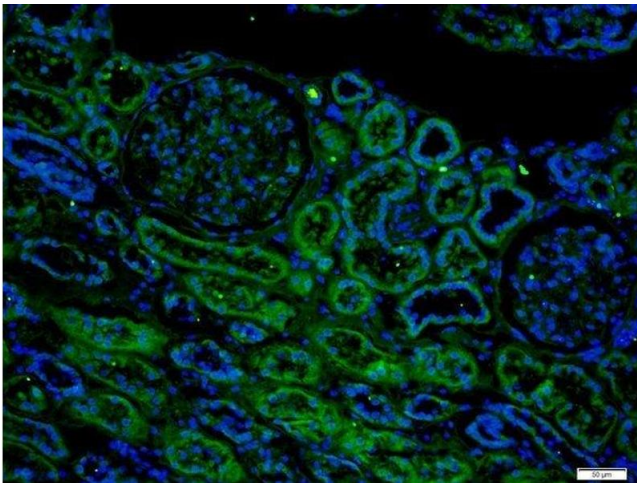
Long, Zheng, Shan, Chen, Fan, Zhang, Gao, Gao, Yang: "Development of a cell-based assay for the detection of anti-aquaporin 1 antibodies in neuromyelitis optica spectrum disorders." in: **Journal of neuroimmunology**, Vol. 273, Issue 1-2, pp. 103-110, (2014) ([PubMed](#)).

Images



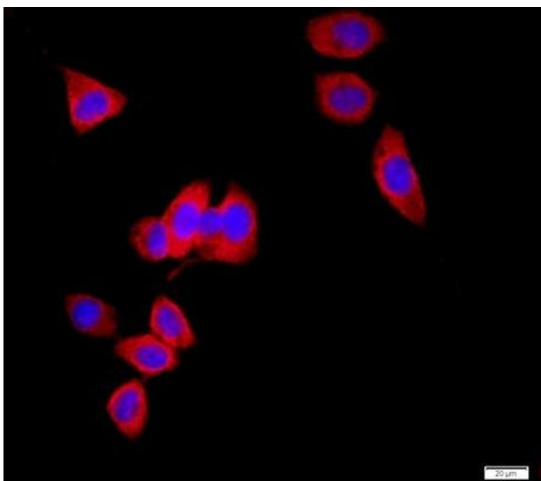
Immunohistochemistry

Image 1. Formalin-fixed and paraffin embedded human placenta labeled with Anti-AQP1/CHIP Polyclonal Antibody, Unconjugated (ABIN687502) followed by conjugation to the secondary antibody and DAB staining



Immunofluorescence (Paraffin-embedded Sections)

Image 2. Paraformaldehyde-fixed, paraffin embedded human kidney, Antigen retrieval by boiling in sodium citrate buffer (pH6) for 15min, Block endogenous peroxidase by 3% hydrogen peroxide for 20 minutes, Blocking buffer (normal goat serum) at 37°C for 30min, Antibody incubation with AQP1 Polyclonal Antibody, Unconjugated at 1:200 overnight at 4°C, followed by a conjugated secondary -AF488) at [1:500] for 90 minutes and DAPI staining of the nuclei.



Immunofluorescence (Cultured Cells)

Image 3. HeLa cells were stained with AQP1 Polyclonal Antibody, Unconjugated at 1:500 in PBS and incubated for two hours at 37°C followed by Goat Anti-Rabbit IgG (H+L) Cy3 conjugated secondary antibody. DAPI staining of the nucleus was done and then detected.

Images

Please check the [product details page](#) for more images. Overall 7 images are available for ABIN687502.