

Datasheet for ABIN687517
anti-AAK1 antibody (AA 301-400)

2 Images

[Go to Product page](#)

Overview

Quantity:	100 µL
Target:	AAK1
Binding Specificity:	AA 301-400
Reactivity:	Mouse
Host:	Rabbit
Clonality:	Polyclonal
Conjugate:	This AAK1 antibody is un-conjugated
Application:	ELISA, Immunofluorescence (Cultured Cells) (IF (cc)), Immunofluorescence (Paraffin-embedded Sections) (IF (p)), Immunohistochemistry (Paraffin-embedded Sections) (IHC (p)), Immunohistochemistry (Frozen Sections) (IHC (fro))

Product Details

Immunogen:	KLH conjugated synthetic peptide derived from human AAK1
Isotype:	IgG
Cross-Reactivity:	Mouse
Predicted Reactivity:	Human,Rat
Purification:	Purified by Protein A.

Target Details

Target:	AAK1
---------	------

Target Details

Alternative Name: AAK1 ([AAK1 Products](#))

Background: Synonyms: AAK 1, Adaptor associated kinase 1, Aak1, AAK1_HUMAN, Adaptor-associated kinase 1, AP2-associated protein kinase 1, DKFZp686F03202, AP2 associated kinase 1, AP2 associated protein kinase 1, DKFZp686F03202, DKFZp686K16132, FLJ23712, FLJ25931, FLJ31060, FLJ42882, FLJ45252, KIAA1048, MGC138170, MGC164568, MGC164570.

Background: AAK1 phosphorylates the AP2M1/mu2 subunit of the adaptor protein complex 2 (AP-2). It may play a role in regulating aspects of clathrin-mediated endocytosis.

[SUBCELLULAR LOCATION] Membrane, Peripheral membrane protein (By similarity). Cell membrane, Peripheral membrane protein (By similarity). Membrane, clathrin-coated pit (By similarity). Note=Active when found in clathrin-coated pits at the plasma membrane (By similarity).

Gene ID: 22848

Application Details

Application Notes: ELISA 1:500-1000
IHC-P 1:200-400
IHC-F 1:100-500
IF(IHC-P) 1:50-200
IF(IHC-F) 1:50-200
IF(ICC) 1:50-200

Restrictions: For Research Use only

Handling

Format: Liquid

Concentration: 1 µg/µL

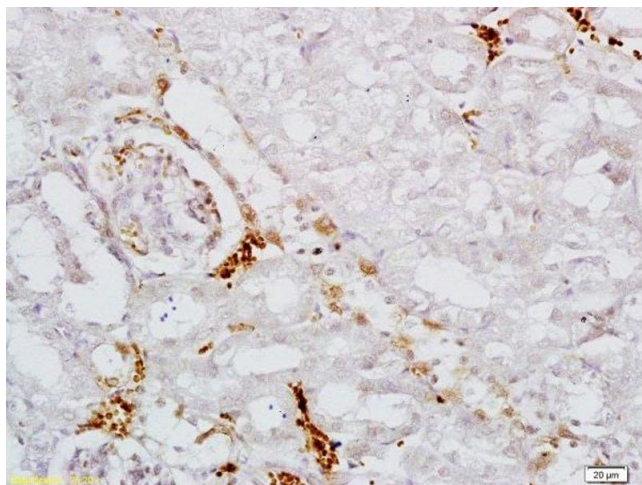
Buffer: 0.01M TBS(pH 7.4) with 1 % BSA, 0.02 % Proclin300 and 50 % Glycerol.

Preservative: ProClin

Precaution of Use: This product contains ProClin: a POISONOUS AND HAZARDOUS SUBSTANCE, which should be handled by trained staff only.

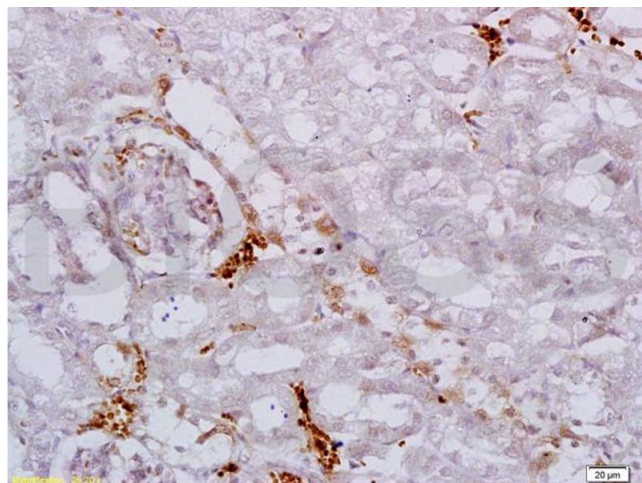
Storage: 4 °C, -20 °C

Storage Comment: Shipped at 4°C. Store at -20°C for one year. Avoid repeated freeze/thaw cycles.



Immunohistochemistry (Paraffin-embedded Sections)

Image 1. Formalin-fixed and paraffin embedded mouse kidney labeled with Anti AAK1 Polyclonal Antibody, Unconjugated at 1:200 followed by conjugation to the secondary antibody and DAB staining



Immunohistochemistry

Image 2. Formalin-fixed and paraffin embedded mouse kidney labeled with Anti AAK1 Polyclonal Antibody, Unconjugated (ABIN687517) at 1:200 followed by conjugation to the secondary antibody and DAB staining