

Datasheet for ABIN687532

anti-Cathepsin L antibody (AA 71-170)

5 Images

1 Publication

[Go to Product page](#)

Overview

Quantity:	100 µL
Target:	Cathepsin L (CTSL1)
Binding Specificity:	AA 71-170
Reactivity:	Human, Rat, Pig
Host:	Rabbit
Clonality:	Polyclonal
Conjugate:	This Cathepsin L antibody is un-conjugated
Application:	Western Blotting (WB), ELISA, Immunofluorescence (Cultured Cells) (IF (cc)), Immunofluorescence (Paraffin-embedded Sections) (IF (p)), Immunohistochemistry (Paraffin-embedded Sections) (IHC (p)), Immunohistochemistry (Frozen Sections) (IHC (fro))

Product Details

Immunogen:	KLH conjugated synthetic peptide derived from mouse capsin L1 proprotein
Isotype:	IgG
Cross-Reactivity:	Human, Pig, Rat
Predicted Reactivity:	Mouse
Purification:	Purified by Protein A.

Target Details

Target:	Cathepsin L (CTSL1)
---------	---------------------

Target Details

Alternative Name:	Cathepsin L (CTSL1 Products)
Background:	<p>Synonyms: fs, MEP, nkt, Ctsl1, 1190035F06Rik, Cathepsin L1, Cathepsin L, Major excreted protein, p39 cysteine proteinase, Ctsl</p> <p>Background: The protein encoded by this gene is a lysosomal cysteine proteinase that plays a major role in intracellular protein catabolism. Its substrates include collagen and elastin, as well as alpha-1 protease inhibitor, a major controlling element of neutrophil elastase activity. The encoded protein has been implicated in several pathologic processes, including myofibril necrosis in myopathies and in myocardial ischemia, and in the renal tubular response to proteinuria. This protein, which is a member of the peptidase C1 family, is a dimer composed of disulfide-linked heavy and light chains, both produced from a single protein precursor. At least two transcript variants encoding the same protein have been found for this gene.</p>
Gene ID:	13039
UniProt:	P06797
Pathways:	Activation of Innate immune Response , Toll-Like Receptors Cascades

Application Details

Application Notes:	WB 1:300-5000 ELISA 1:500-1000 IHC-P 1:200-400 IHC-F 1:100-500 IF(IHC-P) 1:50-200 IF(IHC-F) 1:50-200 IF(ICC) 1:50-200
Restrictions:	For Research Use only

Handling

Format:	Liquid
Concentration:	1 µg/µL
Buffer:	0.01M TBS(pH 7.4) with 1 % BSA, 0.02 % Proclin300 and 50 % Glycerol.
Preservative:	ProClin
Precaution of Use:	This product contains ProClin: a POISONOUS AND HAZARDOUS SUBSTANCE, which should be handled by trained staff only.

Handling

Storage: 4 °C, -20 °C

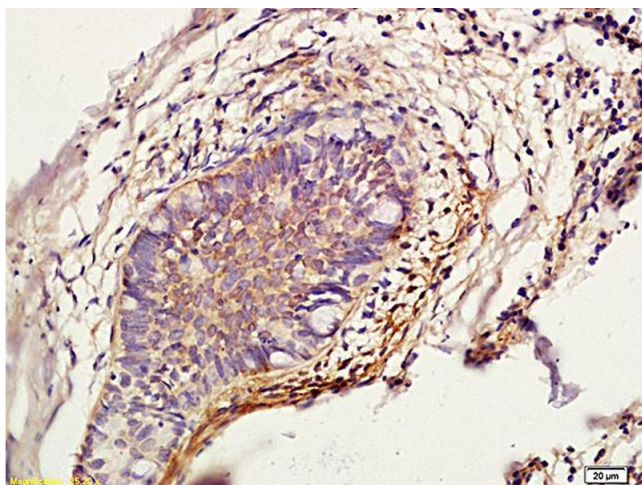
Storage Comment: Shipped at 4°C. Store at -20°C for one year. Avoid repeated freeze/thaw cycles.

Expiry Date: 12 months

Publications

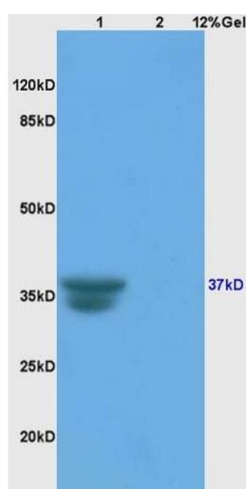
Product cited in: Hernáez, Guerra, Salas, Andrés: "African Swine Fever Virus Undergoes Outer Envelope Disruption, Capsid Disassembly and Inner Envelope Fusion before Core Release from Multivesicular Endosomes." in: **PLoS pathogens**, Vol. 12, Issue 4, pp. e1005595, (2016) ([PubMed](#)).

Images



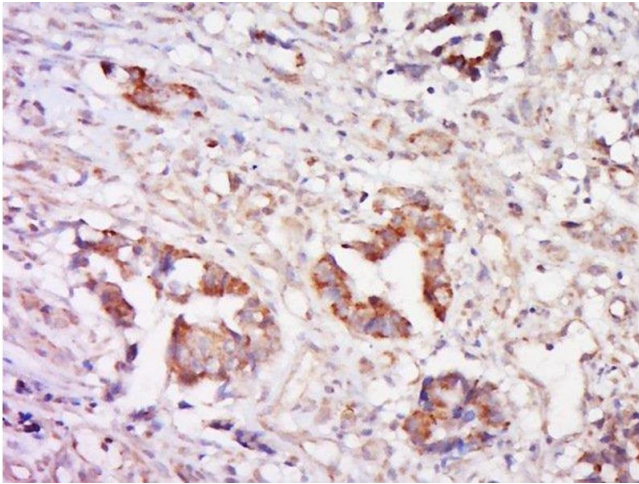
Immunohistochemistry

Image 1. Formalin-fixed and paraffin embedded rat skin labeled with Anti-Cathepsin L/CTSL Polyclonal Antibody (ABIN687532), Unconjugated followed by conjugation to the secondary antibody and DAB staining



SDS-PAGE

Image 2. L1 rat liver, L2 rat brain lysates probed (ABIN687532) at 1:200 in 4 °C. Followed by conjugation to secondary antibody at 1:3000 90min in 37 °C. Predicted band and observed band size: 37kDa.



Immunohistochemistry (Paraffin-embedded Sections)

Image 3. Paraformaldehyde-fixed, paraffin embedded human cervical cancer, Antigen retrieval by boiling in sodium citrate buffer (pH6) for 15min, Block endogenous peroxidase by 3% hydrogen peroxide for 30 minutes, Blocking buffer (normal goat serum) at 37°C for 20min, Antibody incubation with Rabbit Anti-Cathepsin L Polyclonal Antibody, Unconjugated at 1:200 overnight at 4°C, followed by a conjugated secondary and DAB staining.

Please check the [product details page](#) for more images. Overall 5 images are available for ABIN687532.