

Datasheet for ABIN687592
anti-EpCAM antibody (AA 221-314)

4 Images

2 Publications

[Go to Product page](#)

Overview

Quantity:	100 µL
Target:	EpCAM (EPCAM)
Binding Specificity:	AA 221-314
Reactivity:	Human, Mouse, Rat
Host:	Rabbit
Clonality:	Polyclonal
Conjugate:	This EpCAM antibody is un-conjugated
Application:	Western Blotting (WB), Flow Cytometry (FACS), ELISA, Immunohistochemistry (Paraffin-embedded Sections) (IHC (p)), Immunohistochemistry (Frozen Sections) (IHC (fro)), Immunofluorescence (Paraffin-embedded Sections) (IF (p)), Immunofluorescence (Cultured Cells) (IF (cc))

Product Details

Immunogen:	KLH conjugated synthetic peptide derived from human EpCAM
Isotype:	IgG
Cross-Reactivity:	Human, Mouse, Rat
Purification:	Purified by Protein A.

Target Details

Target:	EpCAM (EPCAM)
Alternative Name:	EpCAM/CD326 (EPCAM Products)

Target Details

Background:	<p>Synonyms: ESA, KSA, M4S1, MK-1, DIAR5, EGP-2, EGP4, KS1/4, MIC18, TROP1, EGP314, HNPCC8, TACSTD1, Epithelial cell adhesion molecule, Ep-CAM, Adenocarcinoma-associated antigen, Cell surface glycoprotein Trop-1, Epithelial cell surface antigen, Epithelial glycoprotein, EGP, Epithelial glycoprotein 314, hEGP314, KS 1/4 antigen, Major gastrointestinal tumor-associated protein GA733-2, Tumor-associated calcium signal transducer 1, CD326, EPCAM, GA733-2, M1S2</p> <p>Background: May act as a physical homophilic interaction molecule between intestinal epithelial cells (IECs) and intraepithelial lymphocytes (IELs) at the mucosal epithelium for providing immunological barrier as a first line of defense against mucosal infection. Plays a role in embryonic stem cells proliferation and differentiation. Up-regulates the expression of FABP5, MYC and cyclins A and E.</p>
Gene ID:	4072
UniProt:	P16422

Application Details

Application Notes:	<p>WB 1:300-5000</p> <p>ELISA 1:500-1000</p> <p>FCM 1:20-100</p> <p>IHC-P 1:200-400</p> <p>IHC-F 1:100-500</p> <p>IF(IHC-P) 1:50-200</p> <p>IF(IHC-F) 1:50-200</p> <p>IF(ICC) 1:50-200</p>
Restrictions:	For Research Use only

Handling

Format:	Liquid
Concentration:	1 µg/µL
Buffer:	0.01M TBS(pH 7.4) with 1 % BSA, 0.02 % Proclin300 and 50 % Glycerol.
Preservative:	ProClin
Precaution of Use:	This product contains ProClin: a POISONOUS AND HAZARDOUS SUBSTANCE, which should be handled by trained staff only.

Handling

Storage: 4 °C, -20 °C

Storage Comment: Shipped at 4°C. Store at -20°C for one year. Avoid repeated freeze/thaw cycles.

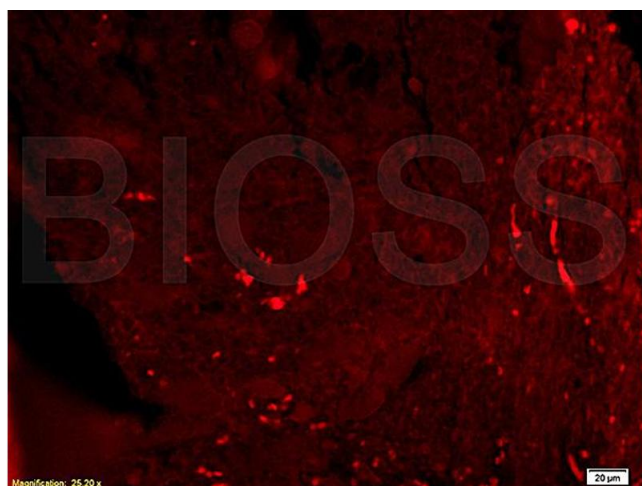
Expiry Date: 12 months

Publications

Product cited in: Gerlach, Foka, Thompson, Gridelli, Schmelzer: "Epithelial cell adhesion molecule fragments and signaling in primary human liver cells." in: **Journal of cellular physiology**, (2017) ([PubMed](#)).

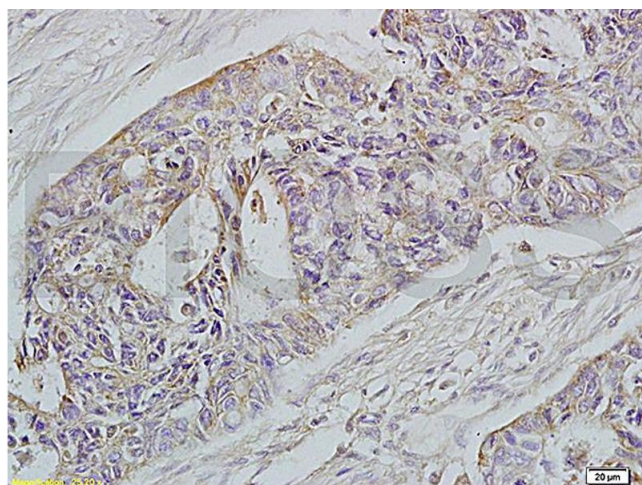
Ahn, Lee, Ko: "Optimization of ELISA conditions to quantify colorectal cancer antigen-antibody complex protein (GA733-FcK) expressed in transgenic plant." in: **Monoclonal antibodies in immunodiagnosis and immunotherapy**, Vol. 33, Issue 1, pp. 1-7, (2014) ([PubMed](#)).

Images



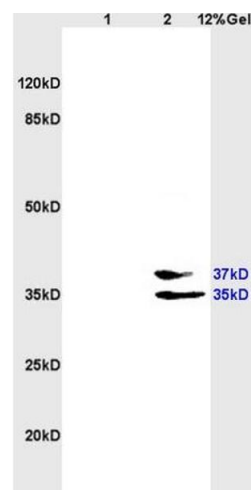
Immunofluorescence

Image 1. Formalin-fixed and paraffin-embedded human rectal carcinoma labeled with Rabbit Anti-EpCAM Polyclonal Antibody (ABIN687592), Unconjugated 1:200 followed by conjugation to the secondary antibody and DAB staining



Immunohistochemistry

Image 2. Formalin-fixed and paraffin-embedded mouse tumor labeled with Rabbit Anti-EpCAM Polyclonal Antibody (ABIN687592), Unconjugated 1:200 followed by conjugation to the Cy 3 secondary antibody



SDS-PAGE

Image 3. L1 rat heart, L2 rat brain lysates probed (ABIN687592) at 1:200 in 4 °C. Followed by conjugation to secondary antibody at 1:3000 90min in 37 °C. Predicted and observed band size: 35kDa.

Please check the [product details page](#) for more images. Overall 4 images are available for ABIN687592.