

Datasheet for ABIN687622

anti-K-RAS antibody



[Go to Product page](#)

1 Image

Overview

| | |
|--------------|---|
| Quantity: | 100 µL |
| Target: | K-RAS (KRAS) |
| Reactivity: | Human, Rat |
| Host: | Rabbit |
| Clonality: | Polyclonal |
| Conjugate: | This K-RAS antibody is un-conjugated |
| Application: | Western Blotting (WB), ELISA, Immunofluorescence (Cultured Cells) (IF (cc)), Immunofluorescence (Paraffin-embedded Sections) (IF (p)), Immunohistochemistry (Paraffin-embedded Sections) (IHC (p)), Immunohistochemistry (Frozen Sections) (IHC (fro)) |

Product Details

| | |
|-----------------------|---|
| Immunogen: | KLH conjugated synthetic peptide derived from human Pan-ras |
| Isotype: | IgG |
| Cross-Reactivity: | Human, Rat |
| Predicted Reactivity: | Mouse,Dog,Cow,Sheep,Pig,Horse |
| Purification: | Purified by Protein A. |

Target Details

| | |
|-------------------|---|
| Target: | K-RAS (KRAS) |
| Alternative Name: | GTPase Kras (KRAS Products) |

Target Details

| | |
|-------------|---|
| Background: | Synonyms: K-Ras, P21 protein, p21ras, H-Ras-1, c-H-ras, N-Ras. Background: RAS superfamily comprises around 50 related genes encoding GTP-binding domain (G-proteins) involved in signal transduction. The main genes are HRAS, NRAS and KRAS. Ras proteins are membrane-bound GTPases. The inactive form is GDP-bound. They are activated by ligand-binding receptor tyrosine kinases such as EGFR, PDGFR, colony-stimulating factor and fibroblast growth factor. These kinases transiently convert RAS-GDP to RAS-GTP, the active form of RAS. Single amino acid substitutions can activate RAS making it highly oncogenic. Such mutations generally reduce the GTPase activity of RAS, prolonging it in its active GTP-bound form. The consequence of this is sustained activation of the RAF1-MAPK signalling pathway. RAS mutations are found in 10-15 % of tumours. A high incidence of RAS mutations is found in pancreatic cancers. |
|-------------|---|

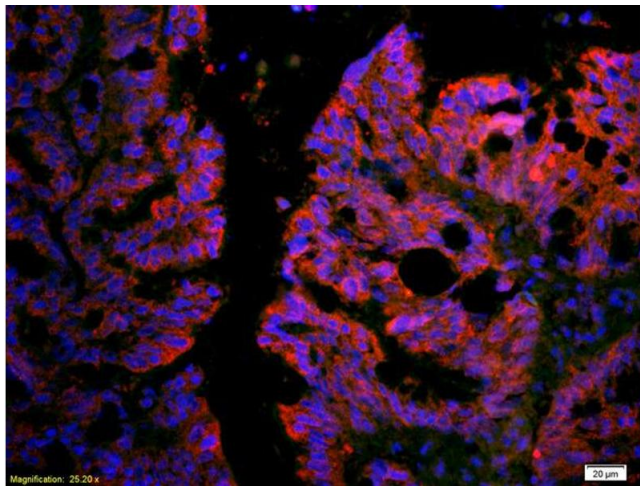
Application Details

| | |
|--------------------|---|
| Application Notes: | WB 1:300-5000 ELISA 1:500-1000 IHC-P 1:200-400 IHC-F 1:100-500 IF(IHC-P) 1:50-200 IF(IHC-F) 1:50-200 IF(ICC) 1:50-200 |
|--------------------|---|

| | |
|---------------|-----------------------|
| Restrictions: | For Research Use only |
|---------------|-----------------------|

Handling

| | |
|--------------------|--|
| Format: | Liquid |
| Concentration: | 1 µg/µL |
| Buffer: | 0.01M TBS(pH 7.4) with 1 % BSA, 0.02 % Proclin300 and 50 % Glycerol. |
| Preservative: | ProClin |
| Precaution of Use: | This product contains ProClin: a POISONOUS AND HAZARDOUS SUBSTANCE, which should be handled by trained staff only. |
| Storage: | 4 °C, -20 °C |
| Storage Comment: | Shipped at 4°C. Store at -20°C for one year. Avoid repeated freeze/thaw cycles. |
| Expiry Date: | 12 months |



Immunofluorescence

Image 1. Formalin-fixed and paraffin embedded human rectal carcinoma labeled with Anti Pan-Ras Polyclonal Antibody, Unconjugated (ABIN687622) at 1:200 followed by conjugation to the secondary antibody Goat Anti-Rabbit IgG, Cy3 conjugated used at 1:200 dilution for 40 minutes at 37 °C.