

Datasheet for ABIN687637

anti-CNTF Receptor alpha antibody (AA 151-160)[Go to Product page](#)**2** Images**1** Publication

Overview

Quantity:	100 µL
Target:	CNTF Receptor alpha (CNTFR)
Binding Specificity:	AA 151-160
Reactivity:	Human
Host:	Rabbit
Clonality:	Polyclonal
Conjugate:	This CNTF Receptor alpha antibody is un-conjugated
Application:	Western Blotting (WB), ELISA, Immunofluorescence (Cultured Cells) (IF (cc)), Immunofluorescence (Paraffin-embedded Sections) (IF (p)), Immunohistochemistry (Paraffin-embedded Sections) (IHC (p)), Immunohistochemistry (Frozen Sections) (IHC (fro))

Product Details

Immunogen:	KLH conjugated synthetic peptide derived from human CNTFR Alpha
Isotype:	IgG
Predicted Reactivity:	Human, Mouse, Rat, Dog, Cow, Sheep, Rabbit
Purification:	Purified by Protein A.

Target Details

Target:	CNTF Receptor alpha (CNTFR)
Alternative Name:	CNTF Receptor alpha (CNTFR Products)

Target Details

Background:	<p>Synonyms: Ciliary neurotrophic factor receptor subunit alpha, CNTF receptor subunit alpha, CNTFR-alpha, CNTFR</p> <p>Background: CNTF Receptor alpha is a receptor belonging to the cytokine superfamily of receptors. Along with LIFR and gp130, CNTF Receptor alpha forms the heterotrimeric CNTF receptor complex. The receptor is attached to the membrane by a glycosyl-phosphatidylinositol linkage and contains an immunoglobulin-like C2-type domain and a fibronectin type-III domain. During signal transduction, CNTF first binds to CNTF Receptor alpha, and this permits the recruitment of gp130 and LIFR beta to form the tripartite receptor complex. Signal transduction stimulates gene expression, cell survival or differentiation in a variety of neuronal cell types. Alternative splicing has been observed at this locus and two variants, both encoding the same protein, have been identified.</p>
Gene ID:	1271
UniProt:	P26992
Pathways:	JAK-STAT Signaling , Feeding Behaviour

Application Details

Application Notes:	WB 1:300-5000 ELISA 1:500-1000 IHC-P 1:200-400 IHC-F 1:100-500 IF(IHC-P) 1:50-200 IF(IHC-F) 1:50-200 IF(ICC) 1:50-200
Restrictions:	For Research Use only

Handling

Format:	Liquid
Concentration:	1 µg/µL
Buffer:	0.01M TBS(pH 7.4) with 1 % BSA, 0.02 % Proclin300 and 50 % Glycerol.
Preservative:	ProClin
Precaution of Use:	This product contains ProClin: a POISONOUS AND HAZARDOUS SUBSTANCE, which should be handled by trained staff only.

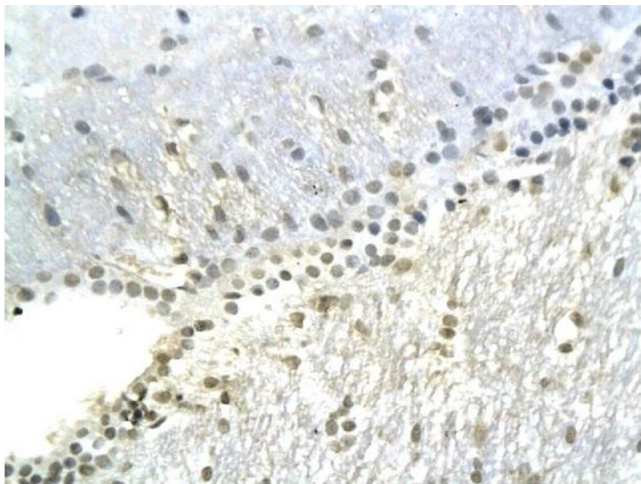
Handling

Storage:	4 °C,-20 °C
Storage Comment:	Shipped at 4°C. Store at -20°C for one year. Avoid repeated freeze/thaw cycles.
Expiry Date:	12 months

Publications

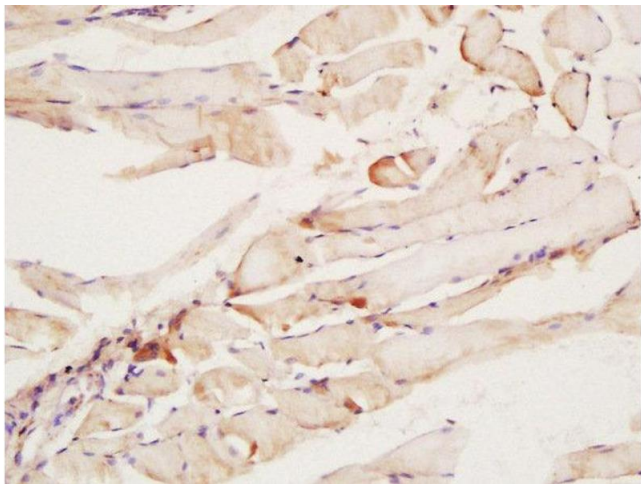
Product cited in:	Schwieger, Warnecke, Lenarz, Esser, Scheper: "Neuronal Survival, Morphology and Outgrowth of Spiral Ganglion Neurons Using a Defined Growth Factor Combination." in: PLoS ONE , Vol. 10, Issue 8, pp. e0133680, (2015) (PubMed).
-------------------	---

Images



Immunohistochemistry

Image 1. Formalin-fixed and paraffin embedded mouse brain labeled with Anti-CNTFR-I' Polyoclonal Antibody, Unconjugated (ABIN687637) at 1:200 followed by conjugation to the secondary antibody and DAB staining



Immunohistochemistry (Paraffin-embedded Sections)

Image 2. Formalin-fixed and paraffin embedded rat muscle labeled with Rabbit Anti-CNTF Receptor alpha Polyclonal Antibody at 1:200 followed by conjugation to the secondary antibody and DAB staining