

Datasheet for ABIN687862
anti-ATF4 antibody (AA 251-351)

4 Images

3 Publications

[Go to Product page](#)

Overview

Quantity:	100 µL
Target:	ATF4
Binding Specificity:	AA 251-351
Reactivity:	Human, Mouse, Rat, Dog, Rabbit
Host:	Rabbit
Clonality:	Polyclonal
Conjugate:	This ATF4 antibody is un-conjugated
Application:	Western Blotting (WB), ELISA, Immunohistochemistry (Paraffin-embedded Sections) (IHC (p)), Immunofluorescence (Cultured Cells) (IF (cc)), Immunofluorescence (Paraffin-embedded Sections) (IF (p)), Flow Cytometry (FACS), Immunohistochemistry (Frozen Sections) (IHC (fro))

Product Details

Immunogen:	KLH conjugated synthetic peptide derived from human ATF4
Isotype:	IgG
Cross-Reactivity:	Dog, Human, Mouse, Rabbit, Rat
Predicted Reactivity:	Cow, Sheep, Pig, Horse
Purification:	Purified by Protein A.

Target Details

Target:	ATF4
---------	------

Target Details

Alternative Name:	ATF4/CREB-2 (ATF4 Products)
Background:	<p>Synonyms: CREB2, TXREB, CREB-2, TAXREB67, Cyclic AMP-dependent transcription factor ATF-4, cAMP-dependent transcription factor ATF-4, Activating transcription factor 4, Cyclic AMP-responsive element-binding protein 2, cAMP-responsive element-binding protein 2, DNA-binding protein TAXREB67, Tax-responsive enhancer element-binding protein 67, ATF4</p> <p>Background: Transcriptional activator. Binds the cAMP response element (CRE) (consensus: 5'-GTGACGT[AC][AG]-3'), a sequence present in many viral and cellular promoters. Cooperates with FOXO1 in osteoblasts to regulate glucose homeostasis through suppression of beta-cell production and decrease in insulin production (By similarity). It binds to a Tax-responsive enhancer element in the long terminal repeat of HTLV-I. Regulates the induction of DDIT3/CHOP and asparagine synthetase (ASNS) in response to ER stress. In concert with DDIT3/CHOP, activates the transcription of TRIB3 and promotes ER stress-induced neuronal apoptosis by regulating the transcriptional induction of BBC3/PUMA. Activates transcription of SIRT4. Regulates the circadian expression of the core clock component PER2 and the serotonin transporter SLC6A4. Binds in a circadian time-dependent manner to the cAMP response elements (CRE) in the SLC6A4 and PER2 promoters and periodically activates the transcription of these genes.</p>
Gene ID:	468
UniProt:	P18848
Pathways:	Thyroid Hormone Synthesis , Myometrial Relaxation and Contraction , ER-Nucleus Signaling , Unfolded Protein Response

Application Details

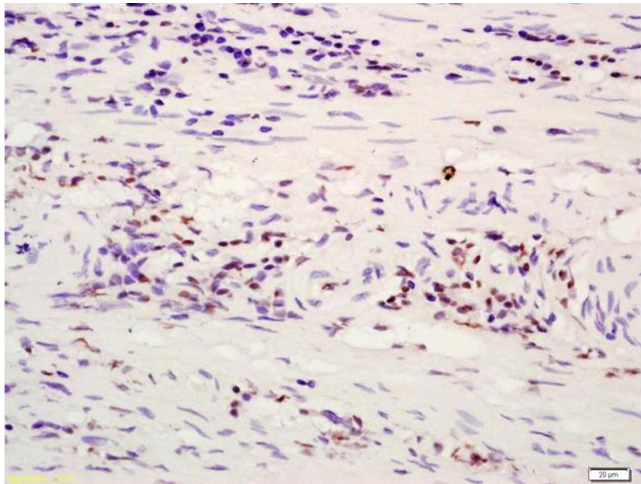
Application Notes:	WB 1:300-5000 ELISA 1:500-1000 FCM 1:20-100 IHC-P 1:200-400 IHC-F 1:100-500 IF(IHC-P) 1:50-200 IF(IHC-F) 1:50-200 IF(ICC) 1:50-200
Restrictions:	For Research Use only

Handling

Format:	Liquid
Concentration:	1 µg/µL
Buffer:	0.01M TBS(pH 7.4) with 1 % BSA, 0.02 % Proclin300 and 50 % Glycerol.
Preservative:	ProClin
Precaution of Use:	This product contains ProClin: a POISONOUS AND HAZARDOUS SUBSTANCE, which should be handled by trained staff only.
Storage:	4 °C,-20 °C
Storage Comment:	Shipped at 4°C. Store at -20°C for one year. Avoid repeated freeze/thaw cycles.
Expiry Date:	12 months

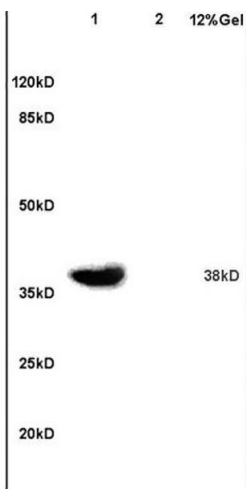
Publications

Product cited in:	<p>Jiang, Yun, Shi, Niu, Gao, Xie, Yu: "Downregulation of miR-384-5p attenuates rotenone-induced neurotoxicity in dopaminergic SH-SY5Y cells through inhibiting endoplasmic reticulum stress." in: American journal of physiology. Cell physiology, Vol. 310, Issue 9, pp. C755-63, (2016) (PubMed).</p> <p>Hayashi, Ouchi, Endou, Anzai: "HOXB9 acts as a negative regulator of activated human T cells in response to amino acid deficiency." in: Immunology and cell biology, Vol. 94, Issue 6, pp. 612-7, (2016) (PubMed).</p> <p>Jiang, Ren, Jiang, Wang, Zhang, Yin, Wang, Qi, Wang, Feng: "Guanabenz delays the onset of disease symptoms, extends lifespan, improves motor performance and attenuates motor neuron loss in the SOD1 G93A mouse model of amyotrophic lateral sclerosis." in: Neuroscience, Vol. 277, pp. 132-8, (2014) (PubMed).</p>
-------------------	--



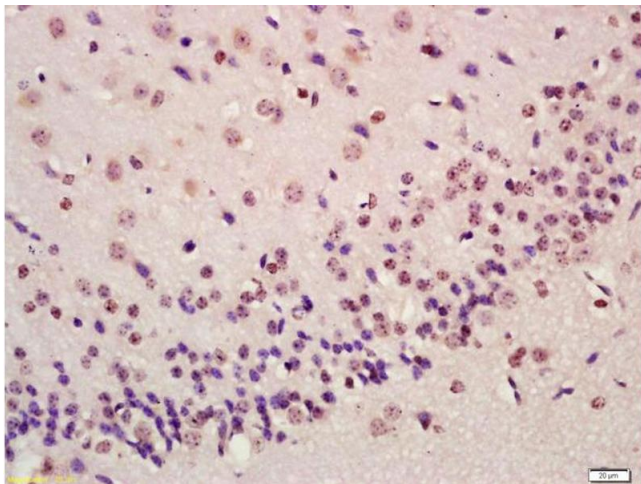
Immunohistochemistry

Image 1. Formalin-fixed and paraffin embedded human rectal carcinoma labeled with Anti-ATF4/CREB-2 Polyclonal Antibody, Unconjugated (ABIN687862) at 1:200 followed by conjugation to the secondary antibody and DAB staining



SDS-PAGE

Image 2. Lane 1: mouse embryo lysates Lane 2: mouse brain lysates probed with Anti ATF4/CREB-2 Polyclonal Antibody, Unconjugated (ABIN687862) at 1:200 in 4C. Followed by conjugation to secondary antibody at 1:3000 90min in 37C. Predicted band 38kD. Observed band size: 38kD



Immunohistochemistry

Image 3. Formalin-fixed and paraffin embedded mouse brain labeled with Anti-ATF4/CREB-2 Polyclonal Antibody, Unconjugated (ABIN687862) at 1:200 followed by conjugation to the secondary antibody and DAB staining

Please check the [product details page](#) for more images. Overall 4 images are available for ABIN687862.