

Datasheet for ABIN6923061

anti-GFP Tag antibody

3 Images



[Go to Product page](#)

Overview

Quantity:	200 µL
Target:	GFP Tag
Reactivity:	Aequorea victoria
Host:	Mouse
Clonality:	Monoclonal
Conjugate:	This GFP Tag antibody is un-conjugated
Application:	Western Blotting (WB), Immunofluorescence (IF), Immunohistochemistry (Paraffin-embedded Sections) (IHC (p))

Product Details

Purpose:	Mouse monoclonal antibody raised against human GFP Tag.
Immunogen:	Recombinant His fusion protein corresponding to human GFP.
Clone:	168AT1211
Isotype:	IgG1
Cross-Reactivity:	Human

Target Details

Target:	GFP Tag
Abstract:	GFP Tag Products
Target Type:	Tag

Application Details

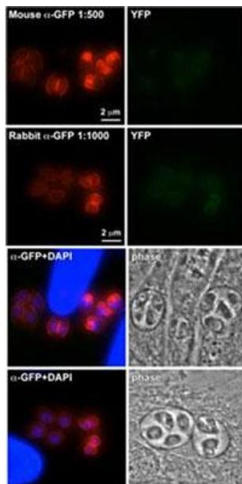
Application Notes:	Immunohistochemistry (1:50-1:100) Immunofluorescence (1:50-1:100) Western Blot (1:4000) The optimal working dilution should be determined by the end user.
--------------------	---

Restrictions:	For Research Use only
---------------	-----------------------

Handling

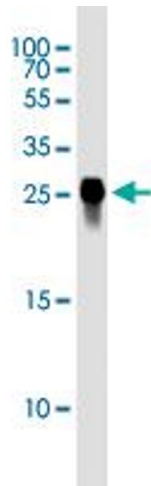
Format:	Liquid
Buffer:	In PBS (0.09 % sodium azide)
Preservative:	Sodium azide
Precaution of Use:	This product contains Sodium azide: a POISONOUS AND HAZARDOUS SUBSTANCE which should be handled by trained staff only.
Storage:	4 °C, -20 °C
Storage Comment:	Store at 4°C. For long term storage store at -20°C. Aliquot to avoid repeated freezing and thawing.

Images



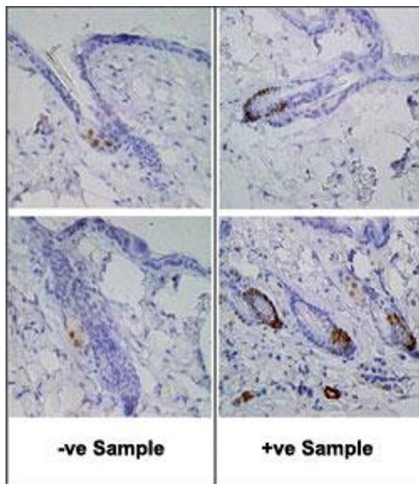
Immunofluorescence

Image 1. Immunofluorescence for GFP Tag Antibody . Antibody target is a YFP tagged protein (the inner membrane complex) of *Toxoplasma gondii*, which localizes around the exterior of the parasite. Brighter parasites represent actively dividing cells and darker ones are not actively dividing. Secondary goat-anti-mouse and goat-anti-rabbit were conjugated with Alexa546 (Molecular Probes) at 1:200 dilution.



Western Blotting

Image 2. Western blot analysis of GFP recombinant protein reacted with GFP Tag monoclonal antibody at 1:4000 dilution.



Immunohistochemistry

Image 3. Immunohistochemical staining of formalin-fixed and paraffin-embedded mouse skin tissue expression GFP reacted with GFP Tag monoclonal antibody at 1:50 dilution. -ve shows negative staining of the antibody in a wild type mouse, whereas +ve shows positive staining in a mouse expressing GFP under the LGR5 promoter. The staining shows localization of GFP at the bottom of the hair follicle.