

Datasheet for ABIN6923105
anti-DCLK1 antibody (AA 690-720)

4 Images

1 Publication

[Go to Product page](#)

Overview

Quantity:	200 µL
Target:	DCLK1
Binding Specificity:	AA 690-720
Reactivity:	Human, Mouse
Host:	Rabbit
Clonality:	Polyclonal
Conjugate:	This DCLK1 antibody is un-conjugated
Application:	Western Blotting (WB), Immunohistochemistry (IHC), Immunohistochemistry (Paraffin-embedded Sections) (IHC (p))

Product Details

Purpose:	Rabbit polyclonal antibody raised against synthetic peptide of DCLK1.
Immunogen:	A synthetic peptide (conjugated with KLH) corresponding to amino acids 690-720 at C-terminus of human DCLK1.
Cross-Reactivity:	Human, Mouse

Target Details

Target:	DCLK1
Alternative Name:	Doublecortin-like kinase 1 (DCLK1 Products)
Gene ID:	9201

Application Details

Application Notes:	Western Blot (1:1000) Immunohistochemistry (1:10-50) The optimal working dilution should be determined by the end user.
--------------------	---

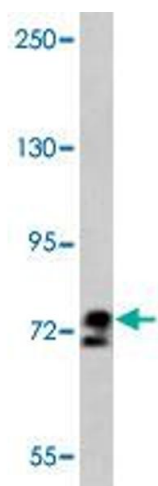
Restrictions:	For Research Use only
---------------	-----------------------

Handling

Format:	Liquid
Buffer:	In PBS (0.09 % sodium azide)
Preservative:	Sodium azide
Precaution of Use:	This product contains Sodium azide: a POISONOUS AND HAZARDOUS SUBSTANCE which should be handled by trained staff only.
Storage:	4 °C,-20 °C
Storage Comment:	Store at 4°C. For long term storage store at -20°C. Aliquot to avoid repeated freezing and thawing.

Publications

Product cited in:	May, Riehl, Hunt, Sureban, Anant, Houchen et al.: "Identification of a novel putative gastrointestinal stem cell and adenoma stem cell marker, doublecortin and CaM kinase-like-1, following radiation injury and in adenomatous polyposis coli/multiple ..." in: Stem cells (Dayton, Ohio) , Vol. 26, Issue 3, pp. 630-7, (2008) (PubMed).
-------------------	--



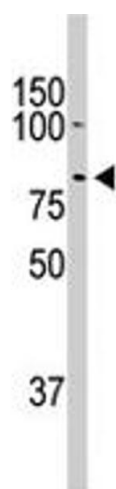
Western Blotting

Image 1. Western blot analysis of ZR-75-1 cell lysate (35 ug/lane) with DCLK1 polyclonal antibody .



Immunohistochemistry

Image 2. Formalin-fixed and paraffin-embedded human hepatocarcinoma reacted with DCLK1 polyclonal antibody , which was peroxidase-conjugated to the secondary antibody, followed by AEC staining. This data demonstrates the use of this antibody for immunohistochemistry; clinical relevance has not been evaluated.



Western Blotting

Image 3. The DCLK1 polyclonal antibody is used in Western blot to detect DCLK1 in mouse heart tissue lysate.

Please check the [product details page](#) for more images. Overall 4 images are available for ABIN6923105.