



[Go to Product page](#)

Datasheet for ABIN6923129  
**anti-PKM2 antibody (AA 483-513)**

3 Images

### Overview

Quantity:	200 µL
Target:	PKM2
Binding Specificity:	AA 483-513
Reactivity:	Human, Mouse, Rat, Monkey, Primate
Host:	Rabbit
Clonality:	Polyclonal
Conjugate:	This PKM2 antibody is un-conjugated
Application:	Western Blotting (WB), ELISA, Immunohistochemistry (Paraffin-embedded Sections) (IHC (p)), Immunofluorescence (IF)

### Product Details

Purpose:	Rabbit polyclonal antibody raised against synthetic peptide of PKM2.
Immunogen:	A synthetic peptide (conjugated with KLH) corresponding to amino acids 483-513 at C-terminus of human PKM2.
Cross-Reactivity:	Human, Monkey, Mouse, Primate, Rat

### Target Details

Target:	PKM2
Alternative Name:	PKM2 ( <a href="#">PKM2 Products</a> )
Gene ID:	5315

## Target Details

---

Pathways: [Warburg Effect](#)

## Application Details

---

Application Notes: ELISA (1:1000)  
Western Blot (1:100-500)  
Immunohistochemistry (1:50-1:100)  
Immunofluorescence (1:10-50)  
The optimal working dilution should be determined by the end user.

Restrictions: For Research Use only

## Handling

---

Format: Liquid

Buffer: In PBS (0.09 % sodium azide)

Preservative: Sodium azide

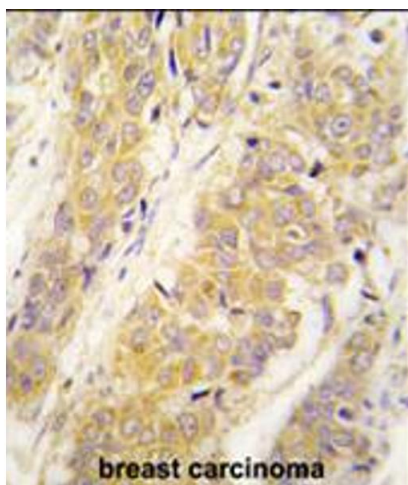
Precaution of Use: This product contains Sodium azide: a POISONOUS AND HAZARDOUS SUBSTANCE which should be handled by trained staff only.

Storage: 4 °C,-20 °C

Storage Comment: Store at 4°C. For long term storage store at -20°C.  
Aliquot to avoid repeated freezing and thawing.

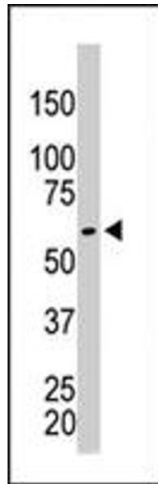
## Images

---



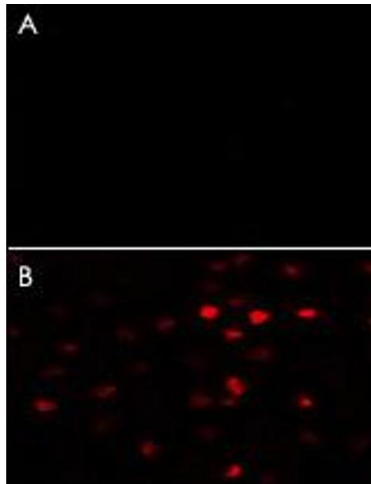
### Immunohistochemistry

**Image 1.** Formalin-fixed and paraffin-embedded human breast carcinoma tissue reacted with PKM2 polyclonal antibody, which was peroxidase-conjugated to the secondary antibody, followed by DAB staining. This data demonstrates the use of this antibody for immunohistochemistry; clinical relevance has not been evaluated.



### Western Blotting

**Image 2.** The PKM2 polyclonal antibody is used in Western blot to detect PKM2 in HeLa cell lysate .



### Immunofluorescence

**Image 3.** A : Negative control of HeLa cells without Alexa-Fluor-546-conjugated donkey anti-rabbit IgG (H+L). Alexa-Fluor-546 emits orange fluorescence. B : Immunofluorescence analysis of PKM2 polyclonal antibody in HeLa cells. 0.025 mg/mL primary antibody was followed by Alexa-Fluor-546-conjugated donkey anti-rabbit IgG (H+L).