

Datasheet for ABIN6932861

## anti-SNCA antibody (pSer129) (Atto 390)

### 5 Images



[Go to Product page](#)

### Overview

Quantity:	100 µg
Target:	SNCA
Binding Specificity:	AA 124-134, pSer129
Reactivity:	Human
Host:	Rabbit
Clonality:	Monoclonal
Conjugate:	This SNCA antibody is conjugated to Atto 390
Application:	Western Blotting (WB), ELISA, Immunohistochemistry (IHC), Immunocytochemistry (ICC)

### Product Details

Immunogen:	Human alpha synuclein AA 124-134: AYEMP-pS-EEGYQ-Cys
Clone:	J18
Isotype:	IgG
Specificity:	Expressed principally in brain but is also expressed in low concentrations in all tissues examined except in liver. Concentrated in presynaptic nerve terminals. Binds to phosphorylated serine 129 on alpha synuclein. Does not detect unphosphorylated serine 129 alpha synuclein
Cross-Reactivity:	Human, Mouse
Purification:	Affinity Purified

## Target Details

Target:	SNCA
Alternative Name:	Alpha Synuclein ( <a href="#">SNCA Products</a> )
Background:	Alpha-Synuclein (SNCA) is expressed predominantly in the brain, where it is concentrated in presynaptic nerve terminals (1). Alpha-synuclein is highly expressed in the mitochondria of the olfactory bulb, hippocampus, striatum and thalamus (2). Functionally, it has been shown to significantly interact with tubulin (3), and may serve as a potential microtubule-associated protein. It has also been found to be essential for normal development of the cognitive functions, inactivation may lead to impaired spatial learning and working memory (4). SNCA fibrillar aggregates represent the major non A-beta component of Alzheimers disease amyloid plaque, and a major component of Lewy body inclusions, and Parkinson's disease. Parkinson's disease (PD) is a common neurodegenerative disorder characterized by the progressive accumulation in selected neurons of protein inclusions containing alpha-synuclein and ubiquitin (5, 6). Alpha synuclein phosphorylated at serine 129 constitutes 90 % of the alpha synuclein found in Lewy bodies (7, 8).
Gene ID:	6622
NCBI Accession:	<a href="#">NP_000336</a>
UniProt:	<a href="#">P37840</a>
Pathways:	<a href="#">Synaptic Membrane</a> , <a href="#">Regulation of G-Protein Coupled Receptor Protein Signaling</a> , <a href="#">Positive Regulation of Endopeptidase Activity</a> , <a href="#">Regulation of Carbohydrate Metabolic Process</a> , <a href="#">Platelet-derived growth Factor Receptor Signaling</a> , <a href="#">Negative Regulation of Transporter Activity</a> , <a href="#">Regulation of long-term Neuronal Synaptic Plasticity</a>

## Application Details

Application Notes:	<ul style="list-style-type: none"><li>• WB (1:500)</li><li>• optimal dilutions for assays should be determined by the user.</li></ul>
Comment:	A 1:500 dilution of ABIN6932861 was sufficient for detection of Alpha Synuclein pSer129 in 10 µg of Mouse Brain by ECL immunoblot analysis using Goat Anti-Rabbit IgG:HRP as the secondary antibody.
Restrictions:	For Research Use only

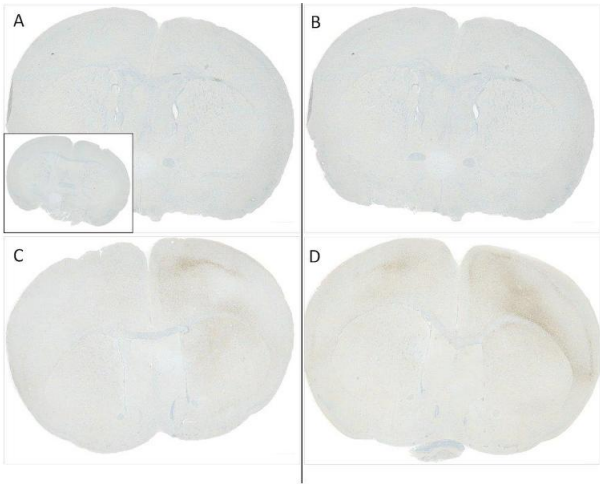
## Handling

Format:	Liquid
---------	--------

Handling

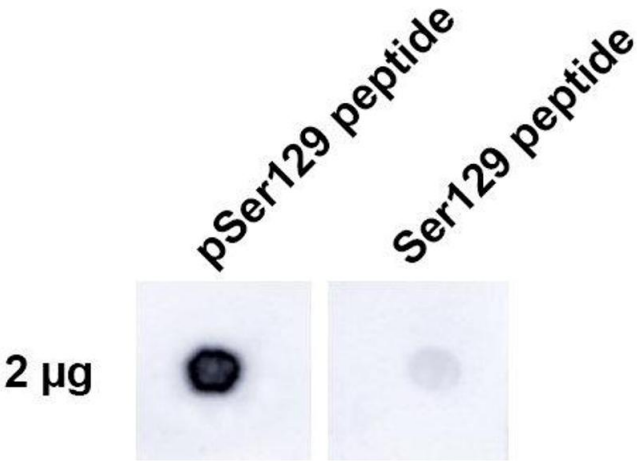
Concentration:	1 mg/mL
Buffer:	PBS pH 7.4, 50 % glycerol, 0.09 % Sodium azide, Storage buffer may change when conjugated
Preservative:	Sodium azide
Precaution of Use:	This product contains Sodium azide: a POISONOUS AND HAZARDOUS SUBSTANCE which should be handled by trained staff only.
Storage:	4 °C
Storage Comment:	Conjugated antibodies should be stored at 4°C

Images



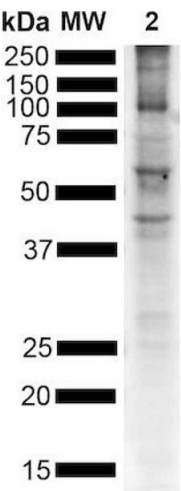
Immunohistochemistry

**Image 1.** Immunohistochemistry analysis using Mouse Anti-Alpha Synuclein pSer129 Monoclonal Antibody, Clone J18 (ABIN6932861). C57/BL6 mice were injected with 5 µg sonicated mouse recombinant alpha synuclein PFFs (ABIN5651245) at 8 weeks of age. Mice were unilaterally injected in the dorsal striatum (bregma AP + 0.2 mm, L +/1 2.0 mm, V - 3.0 mm) and sacrificed 30 days post-injection. (A) contralateral cortex. (B) ipsilateral cortex. © contralateral striatum. (D) ipsilateral striatum. Primary Antibody: Mouse Anti-Alpha Synuclein pSer129 Monoclonal Antibody (ABIN6932861) at 1:10000. Secondary Antibody: anti-rabbit HRP. Courtesy of: Porsolt.



Dot Blot

**Image 2.** Dot Blot analysis using Rabbit Anti-Alpha Synuclein pSer129 Monoclonal Antibody, Clone J18 (ABIN6932861). Tissue: alpha synuclein peptide. Primary Antibody: Rabbit Anti-Alpha Synuclein pSer129 Monoclonal Antibody (ABIN6932861) at 1:500 for 2 hours at RT with shaking . Secondary Antibody: Goat anti-rabbit IgG:HRP at 1:4000 for 1 hour at RT with shaking . Phospho peptide sequence: AYEMP-pS-EEGYQ. Non-phospho peptide sequence: AYEMPSEEGYQ. This sequence is the same for



human, mouse, and rat.

Western Blotting

**Image 3.** Western Blot analysis of Mouse Brain showing detection of Alpha Synuclein pSer129 protein using Rabbit Anti-Alpha Synuclein pSer129 Monoclonal Antibody, Clone J18 (ABIN6932861). Lane 1: MW ladder. Lane 2: Mouse brain. Load: 15 µg. Block: 5 % BSA in TBST. Primary Antibody: Rabbit Anti-Alpha Synuclein pSer129 Monoclonal Antibody (ABIN6932861) at 1:500 for 2 hours at RT with shaking. Secondary Antibody: Goat anti-mouse IgG:HRP at 1:4000 for 1 hour at RT with shaking. Color Development: Chemiluminescent for HRP (Moss) for 5 min in RT. Multiple bands due to phosphorylation.

Please check the [product details page](#) for more images. Overall 5 images are available for ABIN6932861.