

Datasheet for ABIN6932930
anti-VPS35 antibody (PE)



[Go to Product page](#)

7 Images

Overview

Quantity:	100 µg
Target:	VPS35
Reactivity:	Human
Host:	Mouse
Clonality:	Monoclonal
Conjugate:	This VPS35 antibody is conjugated to PE
Application:	Western Blotting (WB), Immunoprecipitation (IP), Immunofluorescence (IF), Immunocytochemistry (ICC)

Product Details

Immunogen:	Full length recombinant human VSP35
Clone:	7E4
Isotype:	IgG2a
Specificity:	Ubiquitous. Highly expressed in brain, colon, heart, kidney, ovary, placenta, skeletal muscle, small intestine, testis, thymus., Detects ~92 kDa.
Cross-Reactivity:	Human, Mouse, Rat
Purification:	Protein G Purified

Target Details

Target:	VPS35
---------	-------

Target Details

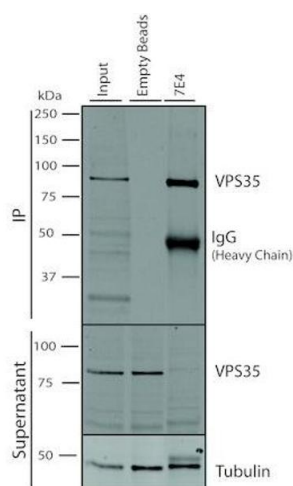
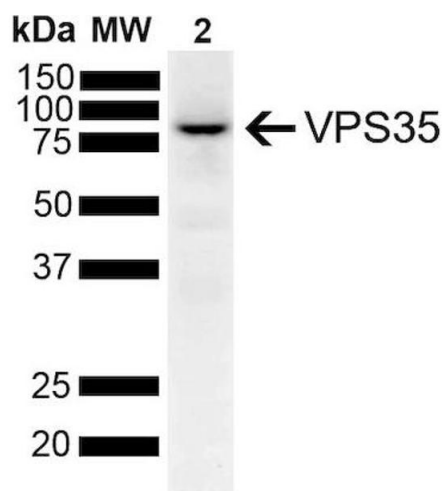
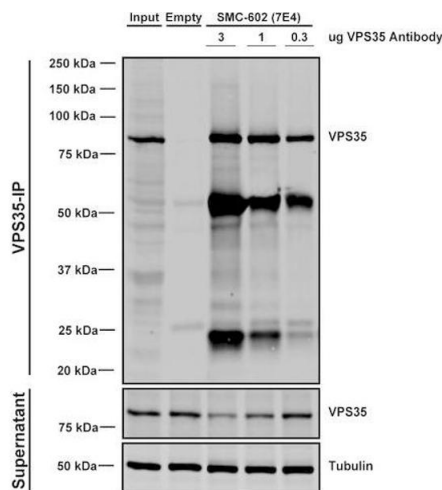
Alternative Name:	VPS35 (VPS35 Products)
Background:	Vacuolar Protein Sorter-35 (VPS35) is a component of the retromer complex, which is essential for endosome-to-Golgi retrieval of membrane proteins. VPS35 mutations such as D620N have been linked to Parkinson's Disease (PD) (1,2) and affect retromer function, protein homeostasis, and mitochondria (3).
Gene ID:	55737
NCBI Accession:	NP_060676
UniProt:	Q96QK1

Application Details

Application Notes:	<ul style="list-style-type: none">• WB (1:1000)• ICC/IF (1:200)• IP (1:200)• optimal dilutions for assays should be determined by the user.
Comment:	A 1:1000 dilution of ABIN6932930 was sufficient for detection of VPS35 in 10 µg of SH-SY5Y by ECL immunoblot analysis using Goat Anti-Mouse IgG:HRP as the secondary antibody.
Restrictions:	For Research Use only

Handling

Format:	Liquid
Concentration:	1 mg/mL
Buffer:	PBS pH 7.4, 50 % glycerol, 0.09 % Sodium azide, Storage buffer may change when conjugated
Preservative:	Sodium azide
Precaution of Use:	This product contains Sodium azide: a POISONOUS AND HAZARDOUS SUBSTANCE which should be handled by trained staff only.
Storage:	4 °C
Storage Comment:	Conjugated antibodies should be stored at 4°C



Immunoprecipitation

Image 1. Immunoprecipitation analysis using Mouse Anti-VPS35 Monoclonal Antibody, Clone 7E4 (ABIN6932930). Tissue: A549 cells. Species: Human. Primary Antibody: Mouse Anti-VPS35 Monoclonal Antibody (ABIN6932930). Three amounts of ABIN6932930 (3, 1 and 0.3 µg) were non-covalently coupled to 10 µL of A/G sepharose beads for 1 hour at 4 °C and next incubated with 250 µg of A549 lysate for 2 hours at 4 °C.

Western Blotting

Image 2. Western Blot analysis of Human SH-SY5Y lysates showing detection of 91.7 kDa VPS35 protein using Mouse Anti-VPS35 Monoclonal Antibody, Clone 7E4 (ABIN6932930). Lane 1: Molecular Weight Ladder. Lane 2: SH-SY5Y. Load: 10 µg. Block: 5 % Skim Milk powder in TBST. Primary Antibody: Mouse Anti-VPS35 Monoclonal Antibody (ABIN6932930) at 1:1000 for 2 hours at RT with shaking. Secondary Antibody: Goat anti-mouse IgG:HRP at 1:4000 for 1 hour at RT with shaking. Color Development: Chemiluminescent for HRP (Moss) for 5 min in RT. Predicted/Observed Size: 91.7 kDa.

Immunoprecipitation

Image 3. Immunoprecipitation analysis using Mouse Anti-VPS35 Monoclonal Antibody, Clone 7E4 (ABIN6932930). Tissue: A549 cells. Species: Human. Primary Antibody: Mouse Anti-VPS35 Monoclonal Antibody (ABIN6932930). 500 µL cell culture supernatants were incubated with 10 µL of Protein A/G resin beads for 1 hour at 4 °C. ABIN6932930 clone 7E4 depletes virtually all of the VPS35 from the A549 cell extract..

Please check the [product details page](#) for more images. Overall 7 images are available for ABIN6932930.