

Datasheet for ABIN6932980

anti-VPS35 antibody**6** Images[Go to Product page](#)

Overview

Quantity:	100 µg
Target:	VPS35
Reactivity:	Human
Host:	Mouse
Clonality:	Monoclonal
Conjugate:	This VPS35 antibody is un-conjugated
Application:	Western Blotting (WB), Immunohistochemistry (IHC), Immunoprecipitation (IP), Immunofluorescence (IF), Immunocytochemistry (ICC)

Product Details

Immunogen:	Full length recombinant human VSP35
Clone:	10A8
Isotype:	IgG2a
Specificity:	Ubiquitous. Highly expressed in brain, colon, heart, kidney, ovary, placenta, skeletal muscle, small intestine, testis, thymus., Detects ~92 kDa.
Cross-Reactivity:	Human, Mouse, Rat
Purification:	Protein G Purified

Target Details

Target:	VPS35
---------	-------

Target Details

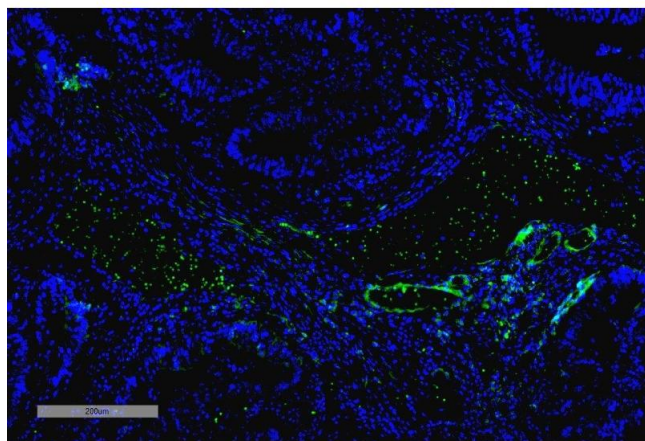
Alternative Name:	VPS35 (VPS35 Products)
Background:	Vacuolar Protein Sorter-35 (VPS35) is a component of the retromer complex, which is essential for endosome-to-Golgi retrieval of membrane proteins. VPS35 mutations such as D620N have been linked to Parkinson's Disease (PD) (1,2) and affect retromer function, protein homeostasis, and mitochondria (3).
Gene ID:	55737
NCBI Accession:	NP_060676
UniProt:	Q96QK1

Application Details

Application Notes:	<ul style="list-style-type: none">• WB (1:1000)• ICC/IF (1:200)• IP (1:200)• optimal dilutions for assays should be determined by the user.
Comment:	A 1:1000 dilution of ABIN6932980 was sufficient for detection of VPS35 in 10 µg of SH-SY5Y by ECL immunoblot analysis using Goat Anti-Mouse IgG:HRP as the secondary antibody.
Restrictions:	For Research Use only

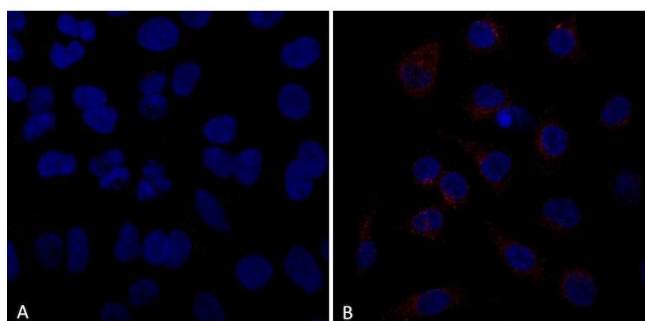
Handling

Format:	Liquid
Concentration:	1 mg/mL
Buffer:	PBS pH 7.4, 50 % glycerol, 0.09 % Sodium azide, Storage buffer may change when conjugated
Preservative:	Sodium azide
Precaution of Use:	This product contains Sodium azide: a POISONOUS AND HAZARDOUS SUBSTANCE which should be handled by trained staff only.
Storage:	-20 °C
Storage Comment:	-20°C



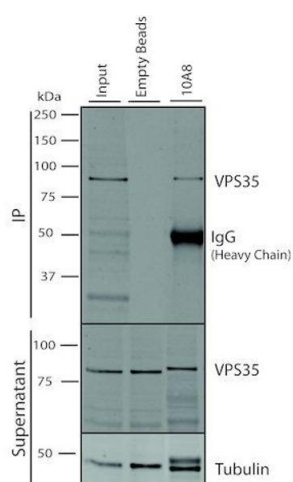
Immunohistochemistry

Image 1. Immunohistochemistry analysis using Mouse Anti-VPS35 Monoclonal Antibody, Clone 10A8 (ABIN6932980). Tissue: Thyroid Cancer. Species: Human. Primary Antibody: Mouse Anti-VPS35 Monoclonal Antibody (ABIN6932980) at 1:100 for Overnight at 4°C, then 30 min at 37°C. Secondary Antibody: Goat Anti-Mouse IgG (H+L): FITC for 45 min at 37°C. Counterstain: DAPI for 3 min at RT. Magnification: 10X.



Immunocytochemistry

Image 2. Immunocytochemistry/Immunofluorescence analysis using Mouse Anti-VPS35 Monoclonal Antibody, Clone 10A8 (ABIN6932980). Tissue: A549 cells. Species: Human. Primary Antibody: Mouse Anti-VPS35 Monoclonal Antibody (ABIN6932980) at 1:5 (tissue culture supernatant). Secondary Antibody: Donkey anti-mouse: Alexa Fluor 594 at 1:4000 in 0.2 % BSA PBS. Counterstain: DAPI. Localization: Vesicles. A) VPS35 KO A549 cells B) WT A549 cells. Courtesy of: Dario Alessi Lab, University of Dundee.



Immunoprecipitation

Image 3. Immunoprecipitation analysis using Mouse Anti-VPS35 Monoclonal Antibody, Clone 10A8 (ABIN6932980). Tissue: A549 cells. Species: Human. Primary Antibody: Mouse Anti-VPS35 Monoclonal Antibody (ABIN6932980). 500 μ L cell culture supernatants were incubated with 10 μ L of Protein A/G resin beads for 1 hour at 4 °C. ABIN6932980 clone 10A8 depletes VPS35 from the A549 cell extract..

Please check the [product details page](#) for more images. Overall 6 images are available for ABIN6932980.