

Datasheet for ABIN6932992  
**anti-VPS35 antibody (Biotin)**



[Go to Product page](#)

6 Images

## Overview

|              |                                                                                                                                 |
|--------------|---------------------------------------------------------------------------------------------------------------------------------|
| Quantity:    | 100 µg                                                                                                                          |
| Target:      | VPS35                                                                                                                           |
| Reactivity:  | Human                                                                                                                           |
| Host:        | Mouse                                                                                                                           |
| Clonality:   | Monoclonal                                                                                                                      |
| Conjugate:   | This VPS35 antibody is conjugated to Biotin                                                                                     |
| Application: | Western Blotting (WB), Immunohistochemistry (IHC), Immunoprecipitation (IP), Immunofluorescence (IF), Immunocytochemistry (ICC) |

## Product Details

|                   |                                                                                                                                                   |
|-------------------|---------------------------------------------------------------------------------------------------------------------------------------------------|
| Immunogen:        | Full length recombinant human VSP35                                                                                                               |
| Clone:            | 10A8                                                                                                                                              |
| Isotype:          | IgG2a                                                                                                                                             |
| Specificity:      | Ubiquitous. Highly expressed in brain, colon, heart, kidney, ovary, placenta, skeletal muscle, small intestine, testis, thymus., Detects ~92 kDa. |
| Cross-Reactivity: | Human, Mouse, Rat                                                                                                                                 |
| Purification:     | Protein G Purified                                                                                                                                |

## Target Details

|         |       |
|---------|-------|
| Target: | VPS35 |
|---------|-------|

## Target Details

---

|                   |                                                                                                                                                                                                                                                                                                               |
|-------------------|---------------------------------------------------------------------------------------------------------------------------------------------------------------------------------------------------------------------------------------------------------------------------------------------------------------|
| Alternative Name: | VPS35 ( <a href="#">VPS35 Products</a> )                                                                                                                                                                                                                                                                      |
| Background:       | Vacuolar Protein Sorter-35 (VPS35) is a component of the retromer complex, which is essential for endosome-to-Golgi retrieval of membrane proteins. VPS35 mutations such as D620N have been linked to Parkinson's Disease (PD) (1,2) and affect retromer function, protein homeostasis, and mitochondria (3). |
| Gene ID:          | 55737                                                                                                                                                                                                                                                                                                         |
| NCBI Accession:   | <a href="#">NP_060676</a>                                                                                                                                                                                                                                                                                     |
| UniProt:          | <a href="#">Q96QK1</a>                                                                                                                                                                                                                                                                                        |

## Application Details

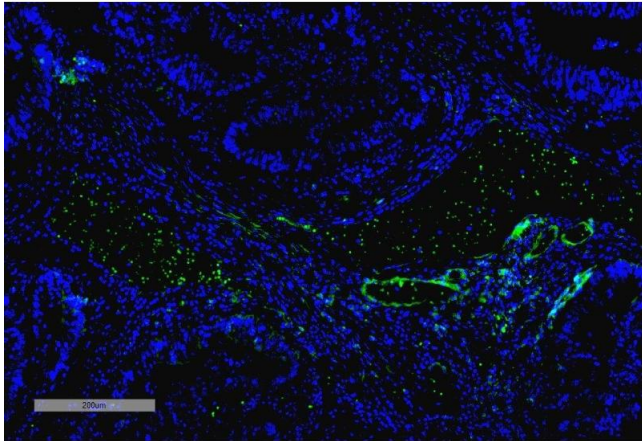
---

|                    |                                                                                                                                                                                                                                                               |
|--------------------|---------------------------------------------------------------------------------------------------------------------------------------------------------------------------------------------------------------------------------------------------------------|
| Application Notes: | <ul style="list-style-type: none"><li>• WB (1:1000)</li><li>• ICC/IF (1:200)</li><li>• IP (1:200)</li><li>• optimal dilutions for assays should be determined by the user.</li><li>• optimal dilutions for assays should be determined by the user.</li></ul> |
| Comment:           | A 1:1000 dilution of ABIN6932992 was sufficient for detection of VPS35 in 10 µg of SH-SY5Y by ECL immunoblot analysis using Goat Anti-Mouse IgG:HRP as the secondary antibody.                                                                                |
| Restrictions:      | For Research Use only                                                                                                                                                                                                                                         |

## Handling

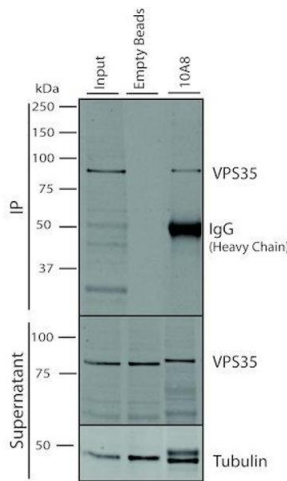
---

|                    |                                                                                                                        |
|--------------------|------------------------------------------------------------------------------------------------------------------------|
| Format:            | Liquid                                                                                                                 |
| Concentration:     | 1 mg/mL                                                                                                                |
| Buffer:            | PBS pH 7.4, 50 % glycerol, 0.09 % Sodium azide, Storage buffer may change when conjugated                              |
| Preservative:      | Sodium azide                                                                                                           |
| Precaution of Use: | This product contains Sodium azide: a POISONOUS AND HAZARDOUS SUBSTANCE which should be handled by trained staff only. |
| Storage:           | 4 °C                                                                                                                   |
| Storage Comment:   | Conjugated antibodies should be stored at 4°C                                                                          |



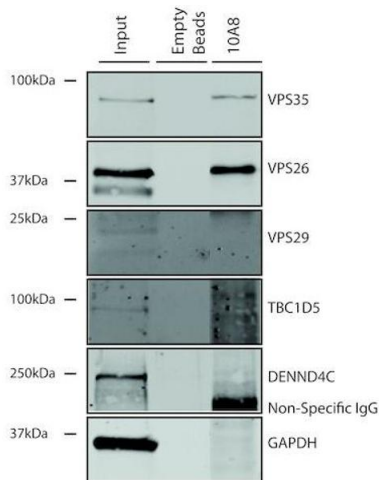
### Immunohistochemistry

**Image 1.** Immunohistochemistry analysis using Mouse Anti-VPS35 Monoclonal Antibody, Clone 10A8 (ABIN6932992). Tissue: Thyroid Cancer. Species: Human. Primary Antibody: Mouse Anti-VPS35 Monoclonal Antibody (ABIN6932992) at 1:100 for Overnight at 4C, then 30 min at 37C. Secondary Antibody: Goat Anti-Mouse IgG (H+L): FITC for 45 min at 37C. Counterstain: DAPI for 3 min at RT. Magnification: 10X.



### Immunoprecipitation

**Image 2.** Immunoprecipitation analysis using Mouse Anti-VPS35 Monoclonal Antibody, Clone 10A8 (ABIN6932992). Tissue: A549 cells. Species: Human. Primary Antibody: Mouse Anti-VPS35 Monoclonal Antibody (ABIN6932992). 500 µL cell culture supernatants were incubated with 10 µL of Protein A/G resin beads for 1 hour at 4 °C. ABIN6932992 clone 10A8 depletes VPS35 from the A549 cell extract..



### Immunoprecipitation

**Image 3.** Immunoprecipitation analysis using Mouse Anti-VPS35 Monoclonal Antibody, Clone 10A8 (ABIN6932992). Tissue: A549 cells. Species: Human. Primary Antibody: Mouse Anti-VPS35 Monoclonal Antibody (ABIN6932992).

Please check the [product details page](#) for more images. Overall 6 images are available for ABIN6932992.