



Datasheet for ABIN6933004
anti-VPS35 antibody



[Go to Product page](#)

7 Images

Overview

Quantity:	100 µg
Target:	VPS35
Reactivity:	Human
Host:	Mouse
Clonality:	Monoclonal
Conjugate:	This VPS35 antibody is un-conjugated
Application:	Western Blotting (WB), Immunohistochemistry (IHC), Immunoprecipitation (IP)

Product Details

Immunogen:	Full length recombinant human VSP35
Clone:	11H10
Isotype:	IgG2b
Specificity:	Ubiquitous. Highly expressed in brain, colon, heart, kidney, ovary, placenta, skeletal muscle, small intestine, testis, thymus., Detects ~92 kDa.
Cross-Reactivity:	Human, Mouse, Rat
Purification:	Protein G Purified

Target Details

Target:	VPS35
Alternative Name:	VPS35 (VPS35 Products)

Target Details

Background: Vacuolar Protein Sorter-35 (VPS35) is a component of the retromer complex, which is essential for endosome-to-Golgi retrieval of membrane proteins. VPS35 mutations such as D620N have been linked to Parkinson's Disease (PD) (1,2) and affect retromer function, protein homeostasis, and mitochondria (3).

Gene ID: 55737

NCBI Accession: [NP_060676](#)

UniProt: [Q96QK1](#)

Application Details

Application Notes:

- WB (1:1000)
- IP (1:200)
- optimal dilutions for assays should be determined by the user.
- optimal dilutions for assays should be determined by the user.

Comment: A 1:1000 dilution of ABIN6933004 was sufficient for detection of VPS35 in 10 µg of SH-SY5Y by ECL immunoblot analysis using Goat Anti-Mouse IgG:HRP as the secondary antibody.

Restrictions: For Research Use only

Handling

Format: Liquid

Concentration: 1 mg/mL

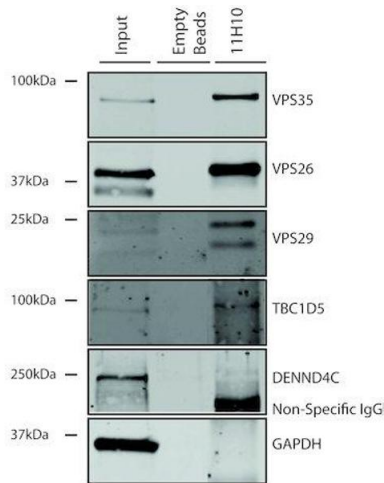
Buffer: PBS pH 7.4, 50 % glycerol, 0.09 % Sodium azide, Storage buffer may change when conjugated

Preservative: Sodium azide

Precaution of Use: This product contains Sodium azide: a POISONOUS AND HAZARDOUS SUBSTANCE which should be handled by trained staff only.

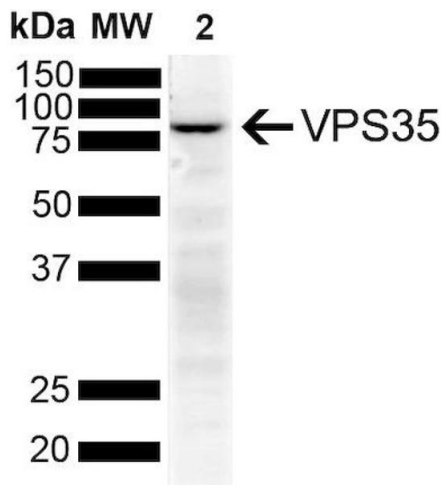
Storage: -20 °C

Storage Comment: -20°C



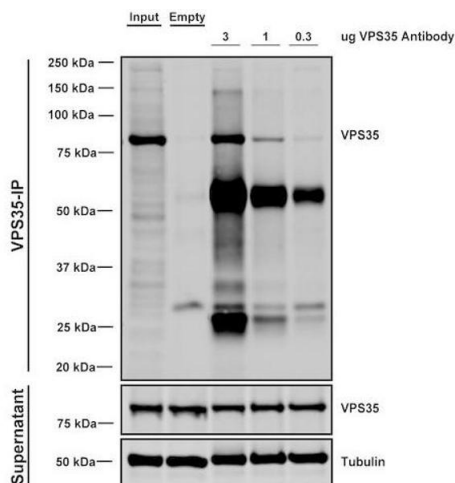
Immunoprecipitation

Image 1. Immunoprecipitation analysis using Mouse Anti-VPS35 Monoclonal Antibody, Clone 11H10 (ABIN6933004). Tissue: A549 cells. Species: Human. Primary Antibody: Mouse Anti-VPS35 Monoclonal Antibody (ABIN6933004).



Western Blotting

Image 2. Western Blot analysis of Human SH-SY5Y showing detection of VPS35 protein using Mouse Anti-VPS35 Monoclonal Antibody, Clone 11H10 (ABIN6933004). Lane 1: Molecular Weight Ladder. Lane 2: SH-SY5Y (10 µg). Load: 10 µg. Block: 5 % Skim Milk powder in TBST. Primary Antibody: Mouse Anti-VPS35 Monoclonal Antibody (ABIN6933004) at 1:1000 for 2 hours at RT with shaking. Secondary Antibody: Goat anti-mouse IgG:HRP at 1:4000 for 1 hour at RT with shaking. Color Development: Chemiluminescent for HRP (Moss) for 5 min in RT.



Immunoprecipitation

Image 3. Immunoprecipitation analysis using Mouse Anti-VPS35 Monoclonal Antibody, Clone 11H10 (ABIN6933004). Tissue: embryonic fibroblast. Species: Mouse. Primary Antibody: Mouse Anti-VPS35 Monoclonal Antibody (ABIN6933004). Three amounts of ABIN6933004 (3, 1 and 0.3 µg) were non-covalently coupled to 10 µL of A/G sepharose beads for 1 hour at 4 °C and next incubated with 250 µg of MEF lysate for 2 hours at 4 °C.

Please check the [product details page](#) for more images. Overall 7 images are available for ABIN6933004.