

Datasheet for ABIN6933008  
**anti-VPS35 antibody (Atto 594)**



[Go to Product page](#)

7 Images

## Overview

Quantity:	100 µg
Target:	VPS35
Reactivity:	Human
Host:	Mouse
Clonality:	Monoclonal
Conjugate:	This VPS35 antibody is conjugated to Atto 594
Application:	Western Blotting (WB), Immunohistochemistry (IHC), Immunoprecipitation (IP)

## Product Details

Immunogen:	Full length recombinant human VSP35
Clone:	11H10
Isotype:	IgG2b
Specificity:	Ubiquitous. Highly expressed in brain, colon, heart, kidney, ovary, placenta, skeletal muscle, small intestine, testis, thymus., Detects ~92 kDa.
Cross-Reactivity:	Human, Mouse, Rat
Purification:	Protein G Purified

## Target Details

Target:	VPS35
Alternative Name:	VPS35 ( <a href="#">VPS35 Products</a> )

### Target Details

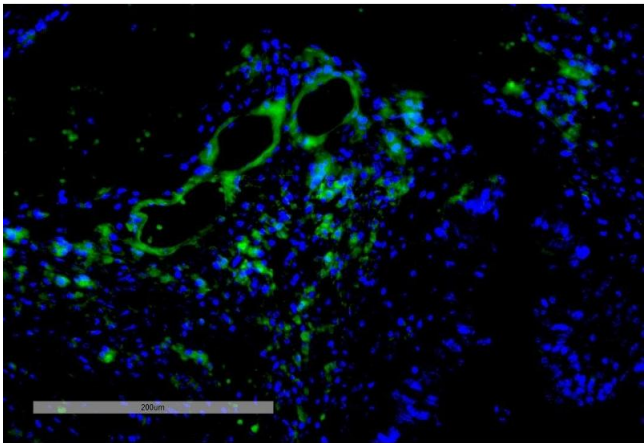
Background:	Vacuolar Protein Sorter-35 (VPS35) is a component of the retromer complex, which is essential for endosome-to-Golgi retrieval of membrane proteins. VPS35 mutations such as D620N have been linked to Parkinson's Disease (PD) (1,2) and affect retromer function, protein homeostasis, and mitochondria (3).
Gene ID:	55737
NCBI Accession:	<a href="#">NP_060676</a>
UniProt:	<a href="#">Q96QK1</a>

### Application Details

Application Notes:	<ul style="list-style-type: none"><li>• WB (1:1000)</li><li>• IP (1:200)</li><li>• optimal dilutions for assays should be determined by the user.</li><li>• optimal dilutions for assays should be determined by the user.</li></ul>
Comment:	A 1:1000 dilution of ABIN6933008 was sufficient for detection of VPS35 in 10 µg of SH-SY5Y by ECL immunoblot analysis using Goat Anti-Mouse IgG:HRP as the secondary antibody.
Restrictions:	For Research Use only

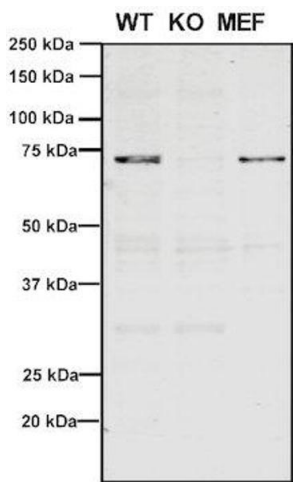
### Handling

Format:	Liquid
Concentration:	1 mg/mL
Buffer:	PBS pH 7.4, 50 % glycerol, 0.09 % Sodium azide, Storage buffer may change when conjugated
Preservative:	Sodium azide
Precaution of Use:	This product contains Sodium azide: a POISONOUS AND HAZARDOUS SUBSTANCE which should be handled by trained staff only.
Storage:	4 °C
Storage Comment:	Conjugated antibodies should be stored at 4°C



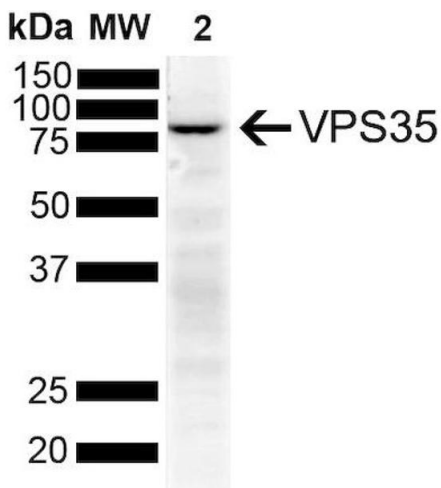
### Immunohistochemistry

**Image 1.** Immunohistochemistry analysis using Mouse Anti-VPS35 Monoclonal Antibody, Clone 11H10 (ABIN6933008). Tissue: Intestinal Cancer. Species: Human. Primary Antibody: Mouse Anti-VPS35 Monoclonal Antibody (ABIN6933008) at 1:100 for Overnight at 4C, then 30 min at 37C. Secondary Antibody: Goat Anti-Mouse IgG (H+L): FITC for 45 min at 37C. Counterstain: DAPI for 3 min at RT. Magnification: 20X.



### Western Blotting

**Image 2.** Western Blot analysis of Human, Mouse A549, MEF showing detection of VPS35 protein using Mouse Anti-VPS35 Monoclonal Antibody, Clone 11H10 (ABIN6933008). Lane 1: Molecular Weight Ladder. Lane 2: VPS35 KO A549 cells. Lane 3: mouse embryonic fibroblast cells.. Load: 8 μg each A549 and MEF. Primary Antibody: Mouse Anti-VPS35 Monoclonal Antibody (ABIN6933008) at 1:5 (tissue culture supernatant). Secondary Antibody: Donkey anti-mouse IRDye 800CW at 1:25000 in TBS-T.



### Western Blotting

**Image 3.** Western Blot analysis of Human SH-SY5Y showing detection of VPS35 protein using Mouse Anti-VPS35 Monoclonal Antibody, Clone 11H10 (ABIN6933008). Lane 1: Molecular Weight Ladder. Lane 2: SH-SY5Y (10 μg). Load: 10 μg. Block: 5 % Skim Milk powder in TBST. Primary Antibody: Mouse Anti-VPS35 Monoclonal Antibody (ABIN6933008) at 1:1000 for 2 hours at RT with shaking. Secondary Antibody: Goat anti-mouse IgG:HRP at 1:4000 for 1 hour at RT with shaking. Color Development: Chemiluminescent for HRP (Moss) for 5 min in RT.

Please check the [product details page](#) for more images. Overall 7 images are available for ABIN6933008.