

Datasheet for ABIN6933655

CD4 Protein (CD4) (AA 26-390) (FITC,His tag)[Go to Product page](#)**3** Images

Overview

Quantity:	200 µg
Target:	CD4
Protein Characteristics:	AA 26-390
Origin:	Human
Source:	HEK-293 Cells
Protein Type:	Recombinant
Biological Activity:	Active
Purification tag / Conjugate:	This CD4 protein is labelled with FITC,His tag.

Product Details

Purity:	>95 % as determined by SDS-PAGE.
Endotoxin Level:	Less than 1.0 EU per µg by the LAL method.

Target Details

Target:	CD4
Alternative Name:	CD4 (CD4 Products)
Background:	T-cell surface glycoprotein CD4 is also known as T-cell surface antigen T4/Leu-3. CD4 contains three Ig-like C2-type (immunoglobulin-like) domains and one Ig-like V-type (immunoglobulin-like) domain. CD4 is accessory protein for MHC class-II antigen/T-cell receptor interaction. CD4 induces the aggregation of lipid rafts. CD4 is a primary receptor used by HIV-1 to gain entry into host T cells. HIV infection leads to a progressive reduction of the number of T cells possessing

Target Details

	CD4 receptors. Therefore, medical professionals refer to the CD4 count to decide when to begin treatment for HIV-infected patients.
Molecular Weight:	41.5 kDa
Pathways:	TCR Signaling , Maintenance of Protein Location , CXCR4-mediated Signaling Events

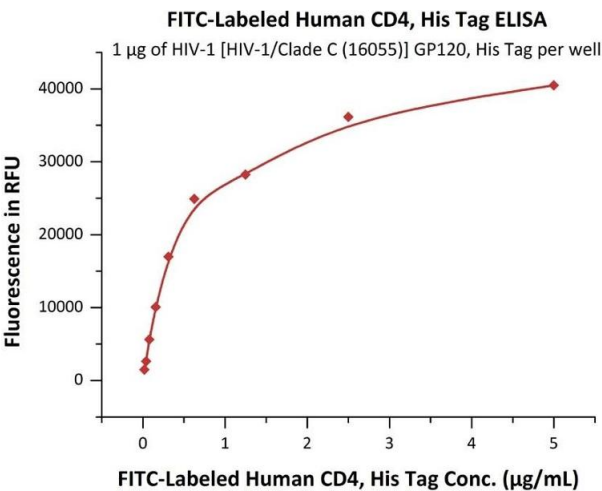
Application Details

Restrictions:	For Research Use only
---------------	-----------------------

Handling

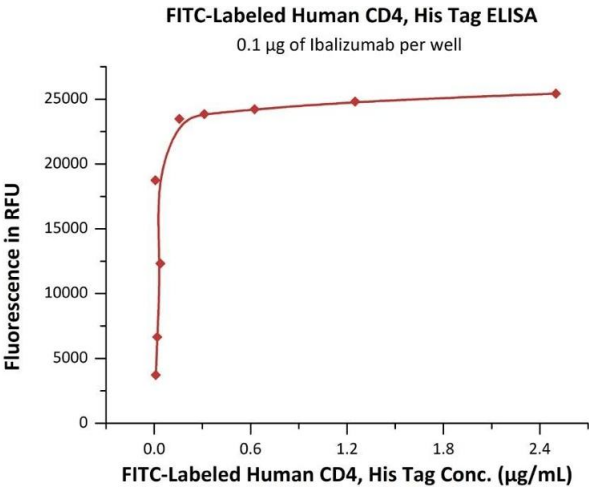
Format:	Lyophilized
Buffer:	PBS, pH 7.4
Storage:	-20 °C

Images



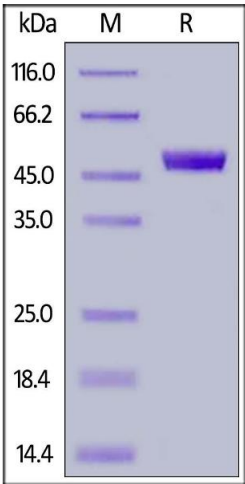
ELISA

Image 1. Immobilized HIV-1 [HIV-1/Clade C (16055)] GP120, His Tag (4) at 10 µg/mL (100 µL/well) can bind Fed Human CD4, His Tag (ABIN6933655, ABIN6938827) with a linear range of 0.039-0.625 µg/mL (Routinely tested).



ELISA

Image 2. Immobilized Ibalizumab at 1 µg/mL (100 µL/well) can bind Fed Human CD4, His Tag (ABIN6933655, ABIN6938827) with a linear range of 0.01-0.156 µg/mL (QC tested).



SDS-PAGE

Image 3. Fed Human CD4, His Tag on under reducing (R) condition. The gel was stained overnight with Coomassie Blue. The purity of the protein is greater than 95 %.