



[Go to Product page](#)

Datasheet for ABIN6933802

anti-XRCC6/XRCC5 antibody (CF®488A)

1 Image

Overview

Quantity:	0.5 mL
Target:	XRCC6/XRCC5
Reactivity:	Human, Primate
Host:	Mouse
Clonality:	Monoclonal
Conjugate:	This XRCC6/XRCC5 antibody is conjugated to CF®488A
Application:	Immunofluorescence (IF), Flow Cytometry (FACS), Test (T)

Product Details

Immunogen:	Nuclear extract of human HL-60 cells
Clone:	KU729
Isotype:	IgG1 kappa
Specificity:	Recognizes a dimer of two proteins of 70 kDa and ~80 kDa, identified as two subunits of Ku. MAb KU729 recognizes a conformational epitope of p70/p80 dimer, which is destroyed during Western blotting. The p70/p80 dimer is important for function of a 460 kDa DNA-dependent protein kinase. Ku protein plays a role in cell signaling, proliferation, DNA repair, replication, transcriptional activation, and apoptosis.
No Cross-Reactivity:	Chicken, Mouse (Murine), Rat (Rattus)
Purification:	Purified by Protein A/G

Target Details

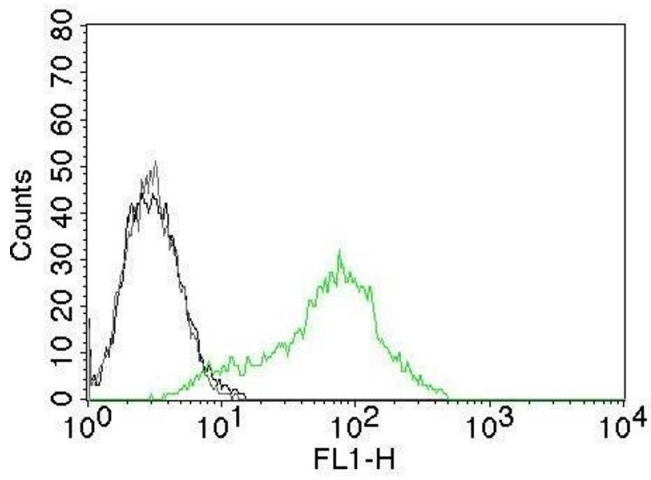
Target:	XRCC6/XRCC5
Alternative Name:	XRCC6 (p70) & XRCC5 (p80) (XRCC6/XRCC5 Products)
Molecular Weight:	70kDa & 80kDa
Gene ID:	2547, 7520
UniProt:	P12956 , P13010

Application Details

Application Notes:	Positive Control: Human cancer K562, HL-60, HEp-2 or HeLa cells. Known Application: Flow Cytometry (5 µL per test per one million cells or 5 µL per 100 µL of whole blood), Immunofluorescence (1:50-1:100), Optimal dilution for a specific application should be determined.
Restrictions:	For Research Use only

Handling

Concentration:	100 µg/mL
Buffer:	10 mM PBS with 0.05 % BSA and 0.05 % azide.
Preservative:	Sodium azide
Precaution of Use:	This product contains Sodium azide: a POISONOUS AND HAZARDOUS SUBSTANCE which should be handled by trained staff only.
Storage:	4 °C
Storage Comment:	Antibody with azide - store at 4 to 8°C. Antibody is stable for 24 months. Non-hazardous. No MSDS required.
Expiry Date:	24 months



Flow Cytometry

Image 1. Flow Cytometry of Human Ku (p70/p80) on 293T cells. Black: cells alone; Grey: Isotype Control; Green: CF488-labeled Ku Monoclonal Antibody (KU729).