

Datasheet for ABIN6934855
anti-Cytokeratin 5 antibody (AA 318-491)



[Go to Product page](#)

2 Images

Overview

Quantity:	0.1 mL
Target:	Cytokeratin 5 (KRT5)
Binding Specificity:	AA 318-491
Reactivity:	Human
Host:	Mouse
Clonality:	Monoclonal
Conjugate:	This Cytokeratin 5 antibody is un-conjugated
Application:	Immunohistochemistry (Formalin-fixed Sections) (IHC (f))

Product Details

Immunogen:	Recombinant human Cytokeratin 5 (KRT5) protein fragment (around aa 318-491) (exact sequence is proprietary)
Clone:	KRT5-2080
Isotype:	IgG1 kappa
Specificity:	This MAb recognizes a protein of 58 kDa, which is identified as Cytokeratin 5 (KRT5). This type II cytokeratin is specifically expressed in the basal layer of the epidermis with family member KRT14. Antibodies to KRT5 identify basal cells of squamous and glandular epithelia, myoepithelia, and mesothelium. Anti-cytokeratin 5 has been reported useful in the differential diagnosis of metastatic carcinoma in the pleura versus epithelioid mesothelioma. Almost all squamous cell carcinomas, half of transitional carcinomas, and many undifferentiated large cell carcinomas express. Anti-KRT5, along with anti-p63, affords a high sensitivity and specificity for

Product Details

squamous differentiation. Myoepithelial cells of the breast, glandular epithelia, and basal cells of the prostate are labeled with anti-KRT5.

Cross-Reactivity (Details): Human.

Target Details

Target: Cytokeratin 5 (KRT5)

Alternative Name: KRT5 ([KRT5 Products](#))

Background: 58 kDa Cytokeratin, CK5, Cytokeratin-5, DDD1, Epidermolysis Bullosa Simplex 2 (EBS2), Keratin 5, Keratin, Type II Cytoskeletal 5, Keratin-5, KRT5, Type-II Cytoskeletal 5, Type-II keratin Kb5, Cytokeratin 5 (KRT5) (Basal, Myoepithelial & Mesothelial Cell Marker)
Cellular localisation: Cytoplasmic

Molecular Weight: 58kDa

Gene ID: 3852, 433845

UniProt: [P13647](#)

Application Details

Application Notes: Known_Application: Immunohistochemistry (Formalin-fixed) (1:50-1:100 for 30 minutes at RT) (Staining of formalin-fixed tissues requires heating tissue sections in 10 mM Tris with 1 mM EDTA, pH 9.0, for 45 min at 95°C followed by cooling at RT for 20 minutes), Optimal dilution for a specific application should be determined.
Positive_Control: MCF-7 or HeLa cells. Tonsil, Esophagus, Cervix or Urinary Bladder. Basal Cell or Squamous Cell Carcinoma.

Restrictions: For Research Use only

Handling

Buffer: Tissue culture supernatant with 0.05% Azide.

Preservative: Sodium azide

Precaution of Use: This product contains Sodium azide: a POISONOUS AND HAZARDOUS SUBSTANCE which should be handled by trained staff only.

Storage: 4 °C

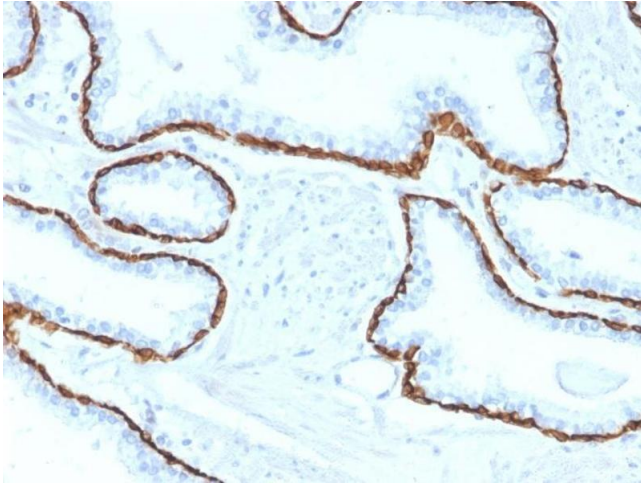
Storage Comment: Antibody with azide - store at 2 to 8°C. Antibody is stable for 24 months. Non-hazardous. No

Handling

MSDS required.

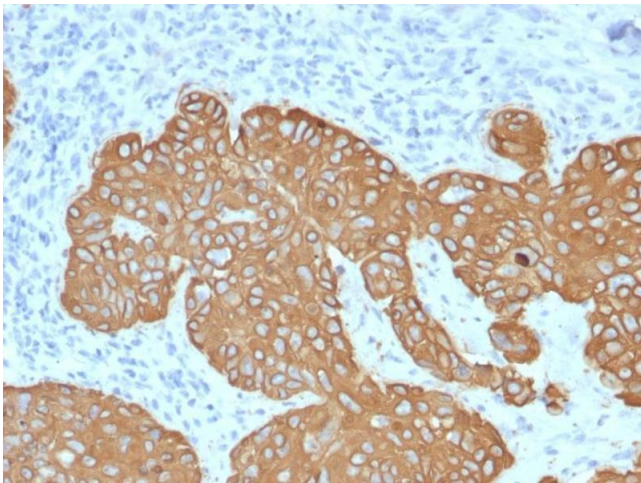
Expiry Date: 24 months

Images



Immunohistochemistry

Image 1. Formalin-fixed, paraffin-embedded human Prostate Carcinoma stained with Cytokeratin 5 (KRT5) Mouse Monoclonal Antibody (KRT5/2080).



Immunohistochemistry

Image 2. Formalin-fixed, paraffin-embedded human Basal Cell Carcinoma stained with Cytokeratin 5 (KRT5) Mouse Monoclonal Antibody (KRT5/2080).