

Datasheet for ABIN6935154

anti-CD20 antibody

4 Images

1 Publication

[Go to Product page](#)

Overview

Quantity:	0.1 mL
Target:	CD20 (MS4A1)
Reactivity:	Human
Host:	Mouse
Clonality:	Monoclonal
Application:	Flow Cytometry (FACS), Immunofluorescence (IF), Immunohistochemistry (Formalin-fixed Sections) (IHC (f))

Product Details

Immunogen:	Human tonsil B cells (L26), Recombinant human MS4A1 protein (IGEL/773)
Clone:	L26-IGEL-773
Isotype:	IgG2a kappa
Specificity:	<p>Recognizes a protein of 30-33 kDa, which is identified as CD20. Its epitope is located in the cytoplasmic domain of CD20 and was, therefore, ascribed as CD20cy in the 5th Workshop. CD20 is a non-Ig differentiation antigen of B-cells and its expression is restricted to normal and neoplastic B-cells, being absent from all other leukocytes and tissues. CD20 is expressed by pre B-cells and persists during all stages of B-cell maturation but is lost upon terminal differentiation into plasma cells. This MAb can be used for immunophenotyping of leukemia and malignant cells, B lymphocyte detection in peripheral blood and B cell localization in tissues. It reacts with the majority of B-cells present in peripheral blood and lymphoid tissues and their derived lymphomas. In lymphoid tissue, germinal center blasts and B-immunoblasts are particularly reactive. It is a reliable antibody for ascribing a B-cell phenotype in known</p>

Product Details

lymphoid tissues. Rarely, CD20-positive T-cell lymphomas have been reported. Reactivity has also been noted with Reed-Sternberg cells in cases of Hodgkin's disease, particularly of lymphocyte predominant type.

No Cross-Reactivity: Cow (Bovine), Dog (Canine), Pig (Porcine), Rat (Rattus)

Cross-Reactivity (Details): Human. Baboon. Monkey. Does not react with Cow, Dog, Pig or Rat.

Target Details

Target: CD20 (MS4A1)

Alternative Name: MS4A1 ([MS4A1 Products](#))

Background: APY, ATOPY, B-lymphocyte antigen CD20, B-lymphocyte cell-surface antigen B1, Bp35, Fc epsilon receptor I beta chain, Fc Fragment of IgE high affinity I receptor for beta polypeptide, FCER1B, High affinity immunoglobulin epsilon receptor subunit beta, IgE Fc receptor subunit beta, IGEL, IGER, IGHER, LEU16, Leukocyte surface antigen Leu-16, Ly44, Membrane spanning 4 domains subfamily A member 2, Membrane-spanning 4-domains subfamily A member 1 (MS4A1), CD20 / MS4A1 (B-Cell Marker)
Cellular localisation: Predominantly cell surface with some cytoplasmic

Molecular Weight: 33-37kDa

Gene ID: 931, 712553

UniProt: [P11836](#)

Application Details

Application Notes: Known_Application: Flow Cytometry (5-10 µL/million cells), Immunofluorescence (1:50-1:100), Immunohistochemistry (Formalin-fixed) (1:100-1:200 for 30 minutes at RT), (Staining of formalin-fixed tissues requires heating tissue sections in 10 mM Tris with 1 mM EDTA, pH 9.0, for 45 min at 95°C followed by cooling at RT for 20 minutes), Optimal dilution for a specific application should be determined.
Positive_Control: Daudi, Raji and U266 and human lymphocytes. Lymph nodes and tonsils.

Restrictions: For Research Use only

Handling

Buffer: Tissue culture supernatant with 0.05% Azide.

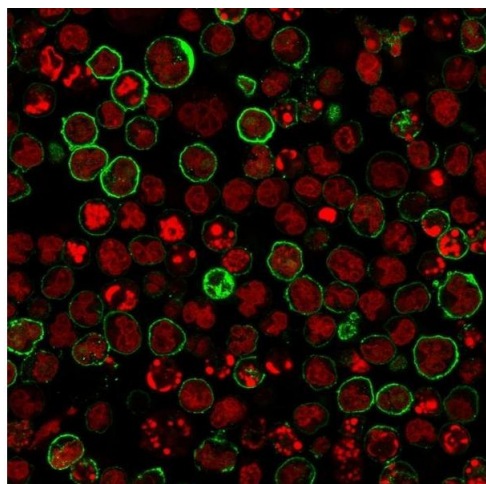
Handling

Preservative:	Sodium azide
Precaution of Use:	This product contains Sodium azide: a POISONOUS AND HAZARDOUS SUBSTANCE which should be handled by trained staff only.
Storage:	4 °C
Storage Comment:	Antibody with azide - store at 2 to 8°C. Antibody is stable for 24 months. Non-hazardous. No MSDS required.
Expiry Date:	24 months

Publications

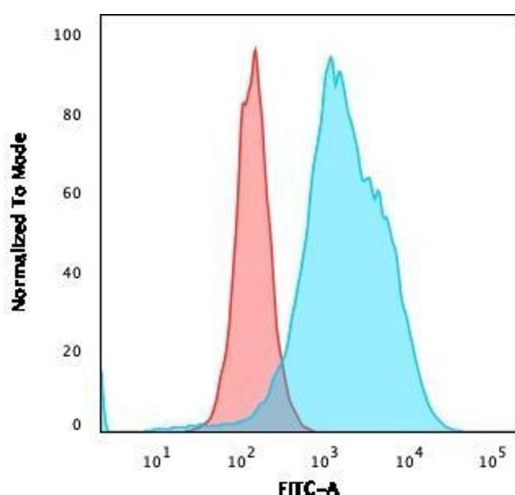
Product cited in: Peivandi, Martens, Heitplatz, Guseva, Mueller, Martens: "Industrial Processing Induces Pericardial Patch Degeneration." in: **Frontiers in surgery**, Vol. 9, pp. 881433, (2022) ([PubMed](#)).

Images



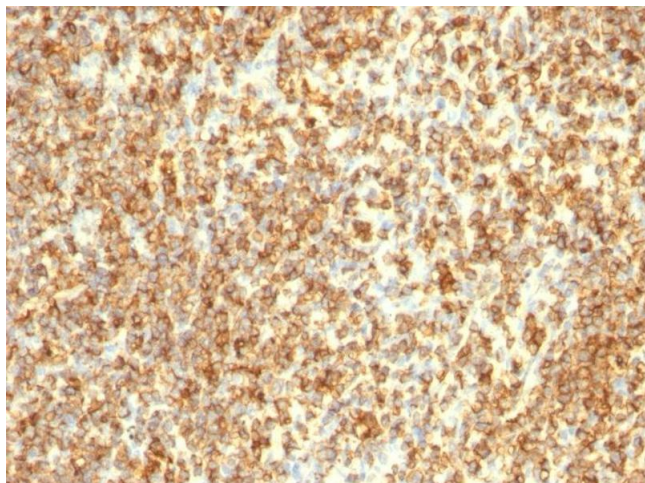
Immunofluorescence

Image 1. Immunofluorescence staining of Raji cells using CD20 Mouse Monoclonal Antibody (L26 + IGEL/773) followed by goat anti-Mouse IgG conjugated to CF488 (green). Nuclei are stained with Reddot.



Flow Cytometry

Image 2. Flow Cytometric Analysis of Raji cells using CD20 Monoclonal Antibody (L26 + IGEL/773) followed by Goat anti-Mouse IgG-CF488 (Blue); Isotype Control (Red).



Immunohistochemistry

Image 3. Formalin-fixed, paraffin-embedded human Lymphoma stained with CD20 Monoclonal Antibody (L26 + IGEL/773)

Please check the [product details page](#) for more images. Overall 4 images are available for ABIN6935154.