

Datasheet for ABIN6936033
anti-ODC1 antibody (CF®488A)



[Go to Product page](#)

1 Image

Overview

Quantity:	0.5 mL
Target:	ODC1
Reactivity:	Human
Host:	Mouse
Clonality:	Monoclonal
Conjugate:	This ODC1 antibody is conjugated to CF®488A
Application:	Immunofluorescence (IF), Flow Cytometry (FACS), Test (T)

Product Details

Immunogen:	Recombinant human ODC-1 protein
Clone:	ODC1-485
Isotype:	IgG1 kappa
Specificity:	Recognizes a 53 kDa protein, identified as the Ornithine Decarboxylase (ODC-1). ODC is the initial and rate-limiting enzyme in the biosynthetic pathway of polyamines and is involved in the conversion of ornithine to putrescine. The biological activity of ODC-1 is rapidly induced in response to virtually all agents known to promote cell proliferation including hormones, drugs, growth factors, mitogens, and tumor promoters. Reportedly, ODC mRNA levels are elevated in lung carcinomas as well as in colon adenomas and carcinomas. ODC activity in colorectal carcinomas is greater than those in adenomas and normal mucosa.
Purification:	Purified by Protein A/G

Target Details

Target: ODC1

Alternative Name: ODC1 ([ODC1 Products](#))

Molecular Weight: 53kDa

Gene ID: 4953

UniProt: [P11926](#)

Application Details

Application Notes: Positive Control: Epithelial cells in normal placenta or prostate carcinoma.
Known Application: Flow Cytometry (5 µL per test per one million cells or 5 µL per 100 µL of whole blood), Immunofluorescence (1:50-1:100), Optimal dilution for a specific application should be determined.

Restrictions: For Research Use only

Handling

Concentration: 100 µg/mL

Buffer: 10 mM PBS with 0.05 % BSA and 0.05 % azide.

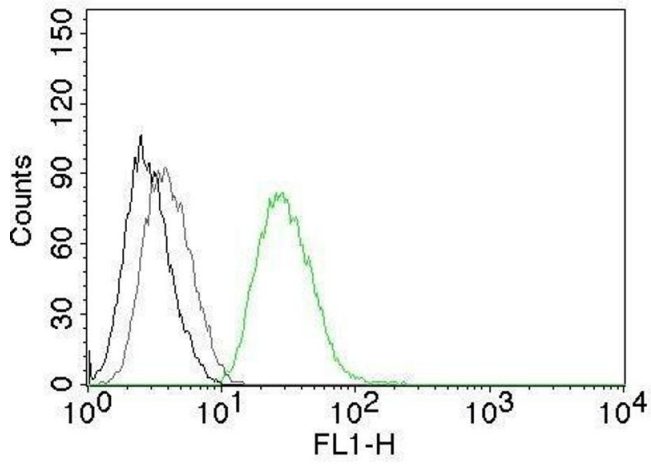
Preservative: Sodium azide

Precaution of Use: This product contains Sodium azide: a POISONOUS AND HAZARDOUS SUBSTANCE which should be handled by trained staff only.

Storage: 4 °C

Storage Comment: Antibody with azide - store at 4 to 8°C. Antibody is stable for 24 months. Non-hazardous. No MSDS required.

Expiry Date: 24 months



Flow Cytometry

Image 1. Flow Cytometry of human ODC1 on PC3 cells. Black: cells alone; Grey: Isotype Control; Green: CF488-labeled ODC1 Monoclonal Antibody (ODC1/485).