

Datasheet for ABIN6938833

FGL1 Protein (AA 23-312) (Fc Tag)**3** Images[Go to Product page](#)

Overview

Quantity:	100 µg
Target:	FGL1
Protein Characteristics:	AA 23-312
Origin:	Human
Source:	HEK-293 Cells
Protein Type:	Recombinant
Biological Activity:	Active
Purification tag / Conjugate:	This FGL1 protein is labelled with Fc Tag.

Product Details

Purity:	>95 % as determined by SDS-PAGE.
Endotoxin Level:	Less than 1.0 EU per µg by the LAL method.

Target Details

Target:	FGL1
Alternative Name:	FGL1 (FGL1 Products)
Background:	Fibrinogen-like protein 1 (FGL1) is also known as HP-041, Hepassocin, HFREP-1, LFIRE-1. The protective effect of fibrinogen-like protein 1 (FGL1) in liver injury has previously been reported. However, studies have shown that FGL1 may be a predictor of GC patients and a target for GC therapy. Immunocytochemical studies revealed that fgl1 selectively binds to defective spermatozoa in the cauda epididymidis. Northern blot analysis and in situ hybridization

Target Details

demonstrated the high expression of fgl1 in the principal cells of the proximal cauda epididymidis. Immunofluorescence analysis using mouse fibrotic lung tissues suggested that fibrotic regions showed increased expressions of Gtse1 and Fgl1, Gtse1 and Fgl1 are suggested to be novel targets for radiation-induced lung fibrosis.

Molecular Weight:	60.5 kDa
NCBI Accession:	NP_004458

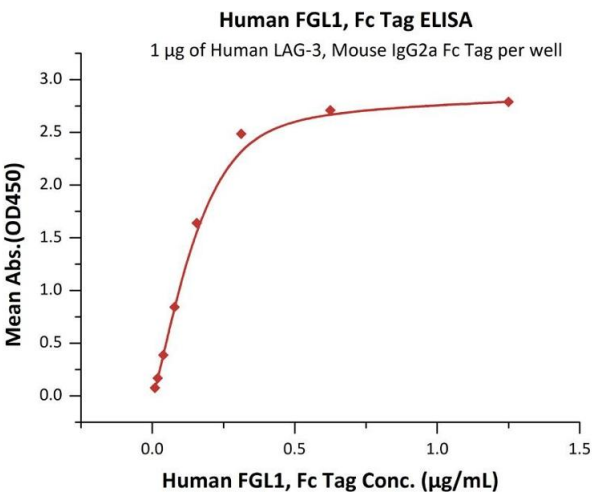
Application Details

Restrictions:	For Research Use only
---------------	-----------------------

Handling

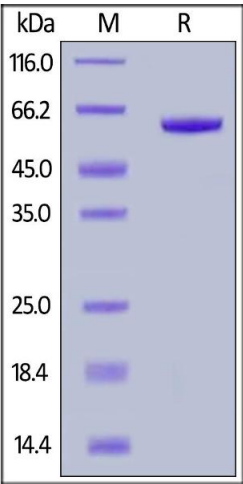
Format:	Lyophilized
Buffer:	50 mM Tris, 100 mM Glycine, 150 mM NaCl, pH 7.5
Storage:	-20 °C

Images



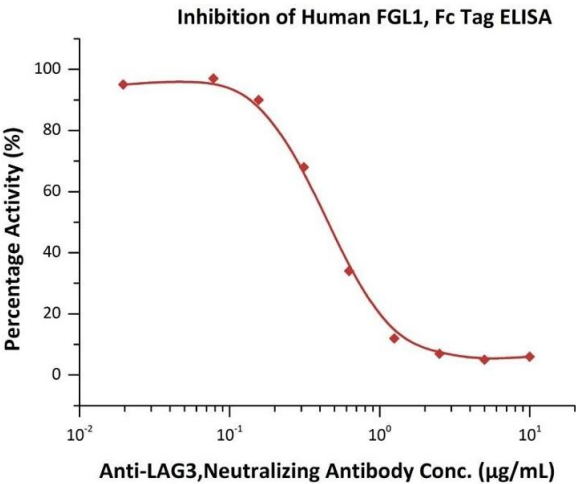
ELISA

Image 1. Immobilized Human LAG-3, Mouse IgG2a Fc Tag (ABIN5674633,ABIN6253716) at 10 µg/mL (100 µL/well) can bind Human FGL1, Fc Tag (ABIN6923182,ABIN6938833) with a linear range of 0.02-0.156 µg/mL (QC tested).



SDS-PAGE

Image 2. Human FGL1, Fc Tag on under reducing (R) condition. The gel was stained overnight with Coomassie Blue. The purity of the protein is greater than 95 % .



ELISA

Image 3. Serial dilutions of A, Neutralizing Antibody were added into Human FGL1, Fc Tag (ABIN6923182,ABIN6938833): Biotinylated Human LAG-3, Mouse IgG2a Fc,Avitag (ABIN5954960,ABIN6253611) binding reactions. The half maximal inhibitory concentration (IC₅₀) is 0.42303 µg/mL (Routinely tested).